



eEF2K Rabbit mAb

Catalog No	YP-rAb-17009
Isotype	IgG
Reactivity	Human,Mouse,Rat
Applications	WB,IF,IP,ELISA
Gene Name	EEF2K
Protein Name	Eukaryotic elongation factor 2 kinase
Purification Process	Protein A
Specificity	Endogenous
Formulation	PBS, 50% glycerol, 0.05% Proclin 300, 0.05%BSA
Source	Monoclonal, Rabbit,IgG
Dilution	WB 1:2000-1:10000; IF 1:200-1:1000; ELISA 1:5000-1:20000; IP 1:50-1:200;
Concentration	0.5 mg/ml
Purity	≥90%
Storage Stability	-15° C to -25° C/1 year(Do not lower than -25° C)
Synonyms	EEF2K ; Eukaryotic elongation factor 2 kinase ; eEF-2 kinase ; eEF-2K ; Calcium/calmodulin-dependent eukaryotic elongation factor 2 kinase
Observed Band	105kD
Calculated Molecular Weight	85kD
Cell Pathway	cytoplasm,cytosol,postsynaptic density,
Tissue Specificity	Epithelium,Glial tumor,Lymph,T-cell,
Function	Catalytic activity:ATP + [elongation factor 2] = ADP + [elongation factor 2] phosphate.,enzyme regulation:Undergoes calcium/calmodulin-dependent intramolecular autophosphorylation, and this results in it becoming partially calcium/calmodulin-independent.,Function:Phosphorylates eukaryotic elongation factor-2. Binds calmodulin.,similarity:Belongs to the protein kinase superfamily. Alpha-type protein kinase family.,similarity:Contains 1 alpha-type protein kinase domain.,subunit:Monomer or homodimer .,
Background	This gene encodes a highly conserved protein kinase in the calmodulin-mediated signaling pathway that links activation of cell surface receptors to cell division. This kinase is involved in the regulation of protein synthesis. It phosphorylates eukaryotic elongation factor 2 (EEF2) and thus inhibits the EEF2 function. The activity of this kinase is increased in many cancers and may be a valid target for





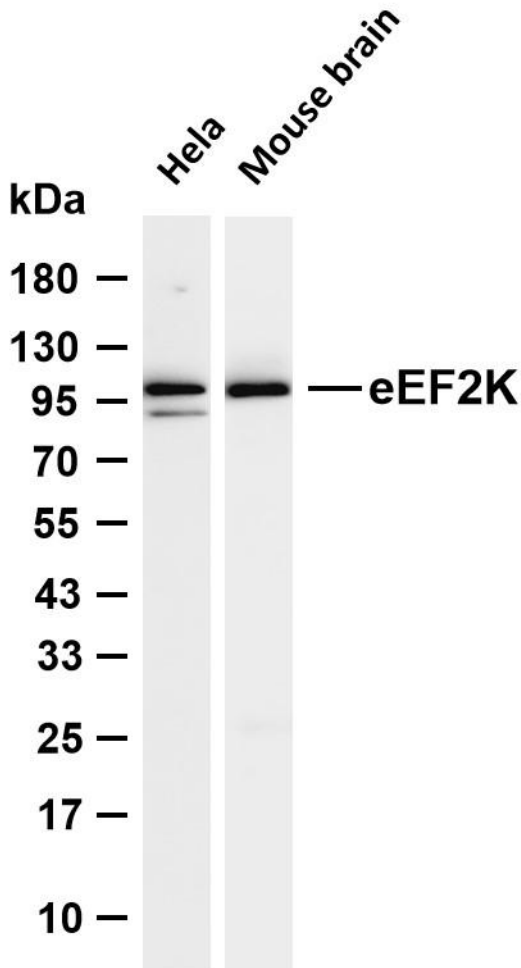
anti-cancer treatment. [provided by RefSeq, Jul 2008],

matters needing attention

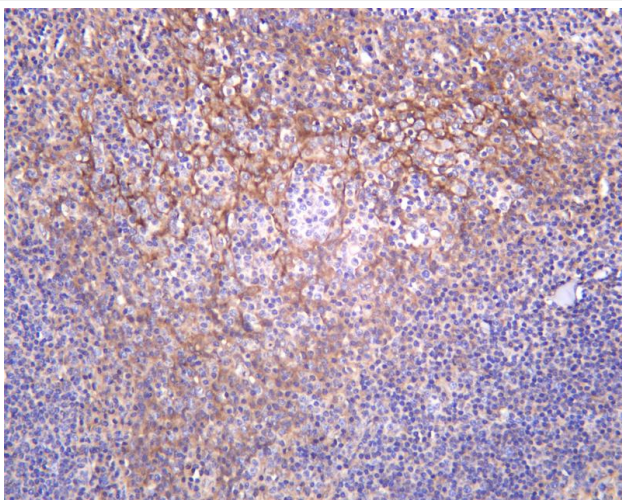
Avoid repeated freezing and thawing!

Usage suggestions

This product can be used in immunological reaction related experiments. For more information, please consult technical personnel.



Various whole cell lysates were separated by 4-20% SDS-PAGE, and the membrane was blotted with anti-eEF2K antibody. The HRP-conjugated Goat anti-Rabbit IgG (H + L) antibody was used to detect the antibody. Lane 1: HeLa Lane 2: Mouse brain
Predicted band size: 85kDa Observed band size: 105kDa



Human tonsil was stained with anti-eEF2K Rabbit antibody

杭州臻优品生物科技有限公司

热销产品:

蛋白、一抗、抗体对、ELISA试剂盒、生化试剂盒
CCK8试剂盒、QPCR检测试剂盒

检测服务:

ELISA检测及定制服务 | 生化检测 | PCR、QPCR检测 | WB检测
ICO-IP检测 | 切片 | 染色 | 免疫组化 | 免疫荧光 | 透射电镜全套
| 宏基因组、转录组、基因组、蛋白组、代谢组测序



关注官网



关注客服



杭州臻优品生物科技有限公司

热销产品:

蛋白、一抗、抗体对、ELISA试剂盒、生化试剂盒
CCK8试剂盒、QPCR检测试剂盒

检测服务:

ELISA检测及定制服务 | 生化检测 | PCR、QPCR检测 | WB检测
ICO-IP检测 | 切片 | 染色 | 免疫组化 | 免疫荧光 | 透射电镜全套
| 宏基因组、转录组、基因组、蛋白组、代谢组测序



关注官网



关注客服