



Bcl-6 Rabbit mAb

Catalog No	YP-rAb-17005
Isotype	IgG
Reactivity	Human,Rat
Applications	WB,IHC,IF,ELISA
Gene Name	BCL6
Protein Name	B-cell lymphoma 6 protein
Purification Process	Protein A
Specificity	Endogenous
Formulation	PBS, 50% glycerol, 0.05% Proclin 300, 0.05%BSA
Source	Monoclonal, Rabbit,IgG
Dilution	IHC 1:200-1:1000; WB 1:2000-1:10000; IF 1:200-1:1000; ELISA 1:5000-1:20000; Note: For IHC, we suggest antigen retrieval with TE buffer pH 9.0
Concentration	0.5 mg/ml
Purity	≥90%
Storage Stability	-15° C to -25° C/1 year(Do not lower than -25° C)
Synonyms	BCL6 ; BCL5 ; LAZ3 ; ZBTB27 ; ZNF51 ; B-cell lymphoma 6 protein ; BCL-6 ; B-cell lymphoma 5 protein ; BCL-5 ; Protein LAZ-3 ; Zinc finger and BTB domain-containing protein 27 ; Zinc finger protein 51
Observed Band	90kD
Calculated Molecular Weight	79kD
Cell Pathway	Nucleus .
Tissue Specificity	Expressed in germinal center T- and B-cells and in primary immature dendritic cells.
Function	Disease:A chromosomal aberration involving BCL6 may be a cause of a form of B-cell leukemia. Translocation t(3;11)(q27;q23) with POU2AF1/OBF1.,Disease:A chromosomal aberration involving BCL6 may be a cause of lymphoma. Translocation t(3;4)(q27;p11) with ARHH/TTF.,Disease:Chromosomal aberrations involving BCL6 may be a cause of B-cell non-Hodgkin lymphoma. Translocation t(3;14)(q27;q32); translocation t(3;22)(q27;q11) with immunoglobulin gene regions.,Function:Transcriptional repressor which is required for germinal center formation and antibody affinity maturation. Probably plays an important role in lymphomagenesis.,induction:Down-regulated during maturation of dendritic cells by selective stimuli such as LPS, CD40L and zymosan.,PTM:Phosphorylated by MAPK1 in response to antigen receptor activation. Phosphorylation induces its

杭州臻优品生物科技有限公司

热销产品:

蛋白、一抗、抗体对、ELISA试剂盒、生化试剂盒
CCK8试剂盒、QPCR检测试剂盒

检测服务:

ELISA检测及定制服务 | 生化检测 | PCR、QPCR检测 | WB检测
ICO-IP检测 | 切片 | 染色 | 免疫组化 | 免疫荧光 | 透射电镜全套
| 宏基因组、转录组、基因组、蛋白组、代谢组测序



关注官网



关注客服



degradation by ubiquitin/proteasome pathway.,similarity:Contains 1 BTB (POZ) domain.,similarity:Contains 6 C2H2-type zinc fingers.,subunit:Interacts with ZBTB7 and BCL6B (By similarity). Interacts with the catalytic domain of HDAC9.,tissue specificity:Expressed in germinal center T and B cells and in primary immature dendritic cells.,

Background

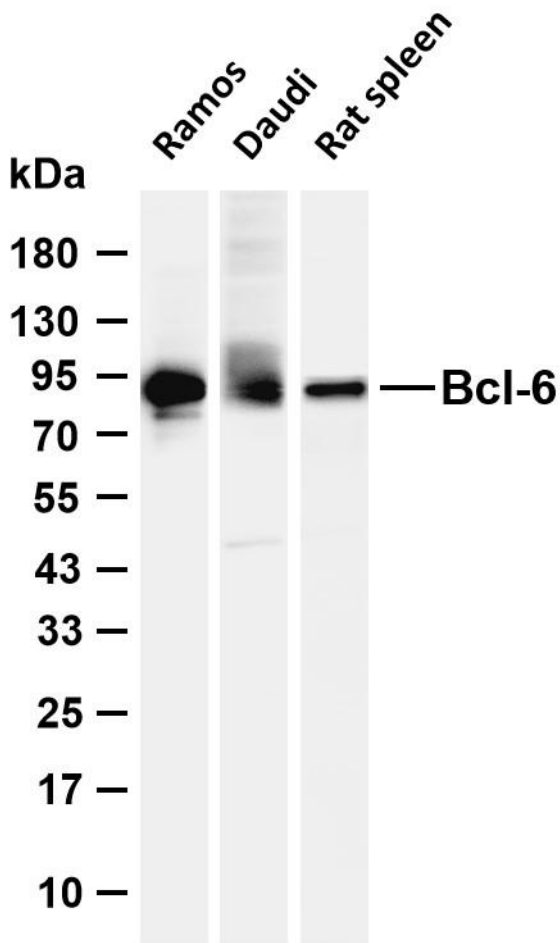
The protein encoded by this gene is a zinc finger transcription factor and contains an N-terminal POZ domain. This protein acts as a sequence-specific repressor of transcription, and has been shown to modulate the transcription of STAT-dependent IL-4 responses of B cells. This protein can interact with a variety of POZ-containing proteins that function as transcription corepressors. This gene is found to be frequently translocated and hypermutated in diffuse large-cell lymphoma (DLCL), and may be involved in the pathogenesis of DLCL. Alternatively spliced transcript variants encoding different protein isoforms have been found for this gene. [provided by RefSeq, Aug 2015],

matters needing attention

Avoid repeated freezing and thawing!

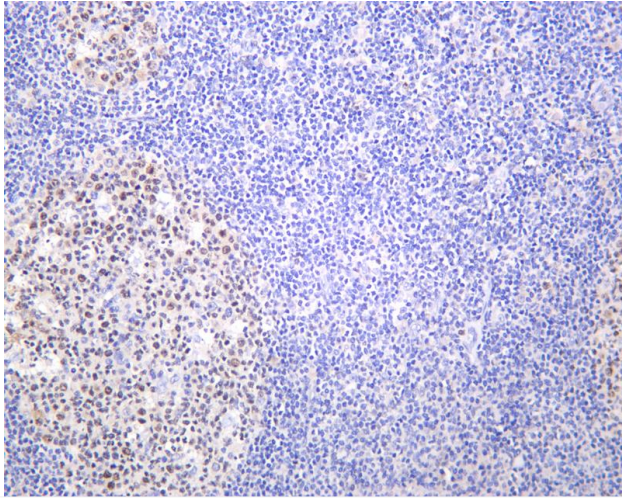
Usage suggestions

This product can be used in immunological reaction related experiments. For more information, please consult technical personnel.

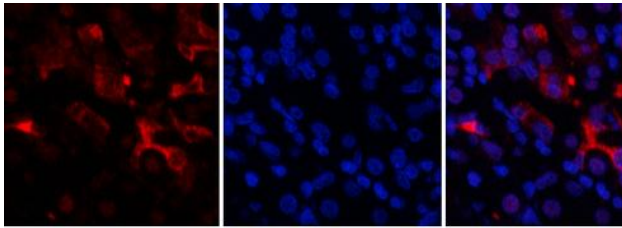


Various whole cell lysates were separated by 4-20% SDS-PAGE, and the membrane was blotted with anti-Bcl-6 antibody. The HRP-conjugated Goat anti-Rabbit IgG (H + L) antibody was used to detect the antibody. Lane 1: Ramos Lane 2: Daudi Lane 3: Rat spleen Predicted band size: 79kDa Observed band size: 90kDa

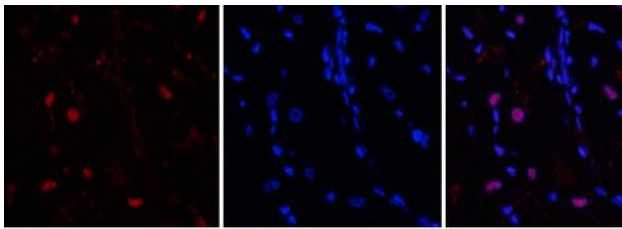




Human tonsil was stained with anti-Bcl-6 Rabbit antibody



Immunofluorescence analysis of human-stomach tissue. 1, Bcl-6 Antibody (red) was diluted at 1:200 (4°C, overnight). 2, Cy3 labeled Secondary antibody was diluted at 1:300 (room temperature, 50min). 3, Picture B: DAPI (blue) 10min. Picture A: Target. Picture B: DAPI. Picture C: merge of A+B



Immunofluorescence analysis of rat-heart tissue. 1, Bcl-6 Antibody (red) was diluted at 1:200 (4°C, overnight). 2, Cy3 labeled Secondary antibody was diluted at 1:300 (room temperature, 50min). 3, Picture B: DAPI (blue) 10min. Picture A: Target. Picture B: DAPI. Picture C: merge of A+B

