



HBEGF Rabbit mAb

Catalog No	YP-rAb-17002
Isotype	IgG
Reactivity	Human,Mouse,Rat
Applications	WB,IHC,IF,ELISA
Gene Name	HBEGF DTR DTS HEGFL
Protein Name	Proheparin-binding EGF-like growth factor [Cleaved into: Heparin-binding EGF-like growth factor (HB-EGF) (HBEGF) (Diphtheria toxin receptor) (DT-R)]
Purification Process	Protein A
Specificity	Endogenous
Formulation	PBS, 50% glycerol, 0.05% Proclin 300, 0.05%BSA
Source	Monoclonal, Rabbit,IgG
Dilution	IHC 1:200-1:1000; WB 1:2000-1:10000; IF 1:200-1:1000; ELISA 1:5000-1:20000; Note: For IHC, we suggest antigen retrieval with TE buffer pH 9.0
Concentration	0.5 mg/ml
Purity	≥90%
Storage Stability	-15° C to -25° C/1 year(Do not lower than -25° C)
Synonyms	
Observed Band	21kD
Calculated Molecular Weight	23kD
Cell Pathway	[Heparin-binding EGF-like growth factor]: Secreted, extracellular space. Mature HB-EGF is released into the extracellular space and probably binds to a receptor.; [Proheparin-binding EGF-like growth factor]: Cell membrane; Single-pass type I membrane protein.
Tissue Specificity	Brain,Eye,Histiocytic lymphoma,Macrophage,
Function	May be involved in macrophage-mediated cellular proliferation. It is mitogenic for fibroblasts and smooth muscle but not endothelial cells. It is able to bind EGF receptors with higher affinity than EGF itself and is a far more potent mitogen for smooth muscle cells than EGF. Also acts as a diphtheria toxin receptor.,PTM:O-linked glycan attachment sites were determined by Edman degradation, O-glycanase digest suggests mucin-type glycosylation (done in HB-EGF purified from histiocytic lymphoma cell line U-937).,PTM:Several N-termini have been identified by direct sequencing. The forms with N-termini 63, 73 and 74 have been tested and found to be biologically active.,similarity:Contains 1 EGF-like domain.,subcellular location:Mature HB-EGF is released into the extracellular space and probably binds to a receptor.,

杭州臻优品生物科技有限公司

热销产品:

蛋白、一抗、抗体对、ELISA试剂盒、生化试剂盒
CCK8试剂盒、QPCR检测试剂盒

检测服务:

ELISA检测及定制服务 | 生化检测 | PCR、QPCR检测 | WB检测
ICO-IP检测 | 切片 | 染色 | 免疫组化 | 免疫荧光 | 透射电镜全套
| 宏基因组、转录组、基因组、蛋白组、代谢组测序



关注官网



关注客服



Background

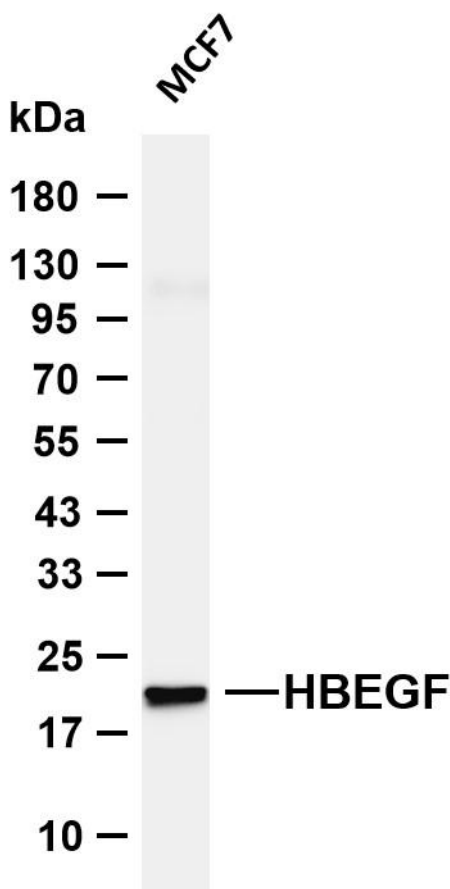
function: May be involved in macrophage-mediated cellular proliferation. It is mitogenic for fibroblasts and smooth muscle but not endothelial cells. It is able to bind EGF receptors with higher affinity than EGF itself and is a far more potent mitogen for smooth muscle cells than EGF. Also acts as a diphtheria toxin receptor.,PTM: O-linked glycan attachment sites were determined by Edman degradation, O-glycanase digest suggests mucin-type glycosylation (done in HB-EGF purified from histiocytic lymphoma cell line U-937).,PTM: Several N-termini have been identified by direct sequencing. The forms with N-termini 63, 73 and 74 have been tested and found to be biologically active.,similarity: Contains 1 EGF-like domain.,subcellular location: Mature HB-EGF is released into the extracellular space and probably binds to a receptor.,

matters needing attention

Avoid repeated freezing and thawing!

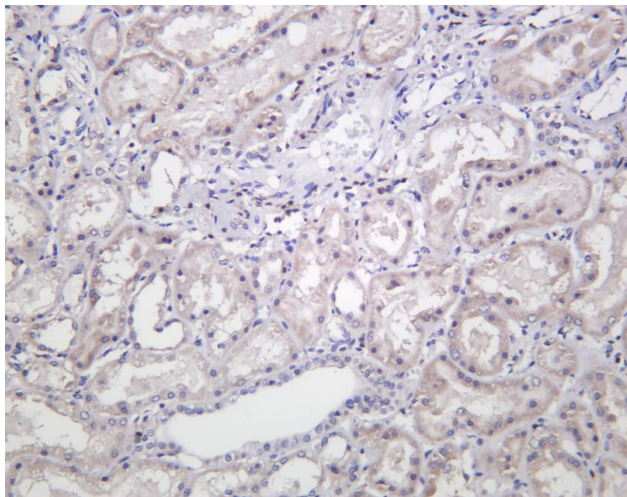
Usage suggestions

This product can be used in immunological reaction related experiments. For more information, please consult technical personnel.



Various whole cell lysates were separated by 4-20% SDS-PAGE, and the membrane was blotted with anti-HBEGF antibody. The HRP-conjugated Goat anti-Rabbit IgG (H + L) antibody was used to detect the antibody. Lane 1: MCF7 Predicted band size: 23kDa Observed band size: 21kDa





Human kidney was stained with anti-HBEGF Rabbit antibody

杭州臻优品生物科技有限公司

热销产品:

蛋白、一抗、抗体对、ELISA试剂盒、生化试剂盒
CCK8试剂盒、QPCR检测试剂盒

检测服务:

ELISA检测及定制服务 | 生化检测 | PCR、QPCR检测 | WB检测
ICO-IP检测 | 切片 | 染色 | 免疫组化 | 免疫荧光 | 透射电镜全套
| 宏基因组、转录组、基因组、蛋白组、代谢组测序



关注官网



关注客服