



# SLC40A1 Rabbit mAb

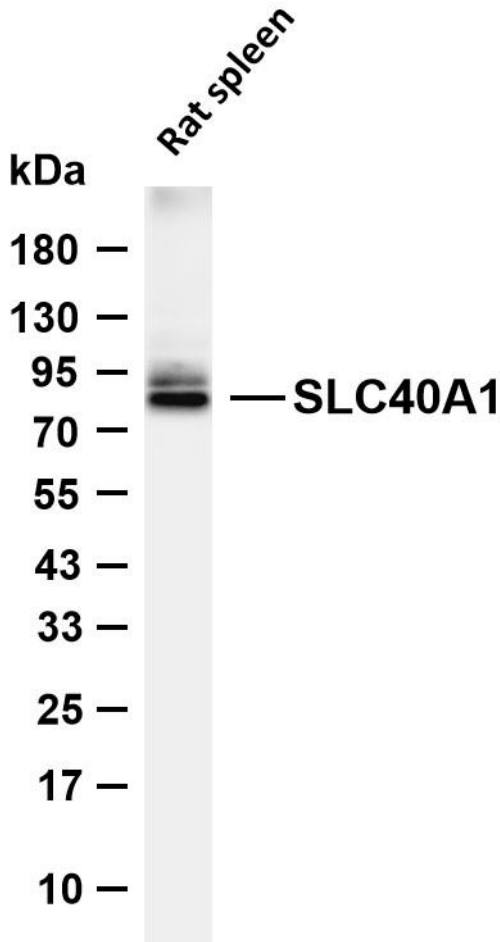
<b>Catalog No</b>	YP-rAb-16995
<b>Isotype</b>	IgG
<b>Reactivity</b>	Human,Mouse,Rat,Chicken
<b>Applications</b>	WB,IHC,IF,ELISA
<b>Gene Name</b>	SLC40A1 FPN1 IREG1 SLC11A3 MSTP079
<b>Protein Name</b>	Solute carrier family 40 member 1 (Ferroportin-1) (Iron-regulated transporter 1)
<b>Purification Process</b>	Protein A
<b>Specificity</b>	Endogenous
<b>Formulation</b>	PBS, 50% glycerol, 0.05% Proclin 300, 0.05%BSA
<b>Source</b>	Monoclonal, Rabbit,IgG
<b>Dilution</b>	IHC 1:100-1:200; WB 1:2000-1:10000; IF 1:200-1:1000; ELISA 1:5000-1:20000; Note: For IHC, we suggest antigen retrieval with TE buffer pH 9.0
<b>Concentration</b>	0.5 mg/ml
<b>Purity</b>	≥90%
<b>Storage Stability</b>	-15° C to -25° C/1 year(Do not lower than -25° C)
<b>Synonyms</b>	
<b>Observed Band</b>	80kD
<b>Calculated Molecular Weight</b>	63kD
<b>Cell Pathway</b>	Cell membrane ; Multi-pass membrane protein . Localized to the basolateral membrane of polarized epithelial cells.
<b>Tissue Specificity</b>	Detected in erythrocytes (at protein level). Expressed in placenta, intestine, muscle and spleen.
<b>Function</b>	Major iron transporter that plays a key role in balancing cellular and systemic iron levels . Transports iron from intestinal, splenic, and hepatic cells into the blood to provide iron to other tissues (By similarity). Controls therefore dietary iron uptake, iron recycling by macrophages, and release of iron stores in hepatocytes (By similarity). When iron is in excess, hepcidin/HAMP levels increase resulting in a degradation of ferroportin/SLC40A1 limiting the iron efflux to plasma .
<b>Background</b>	The protein encoded by this gene is a cell membrane protein that may be involved in iron export from duodenal epithelial cells. Defects in this gene are a cause of hemochromatosis type 4 (HFE4). [provided by RefSeq, Jul 2008]
<b>matters needing attention</b>	Avoid repeated freezing and thawing!



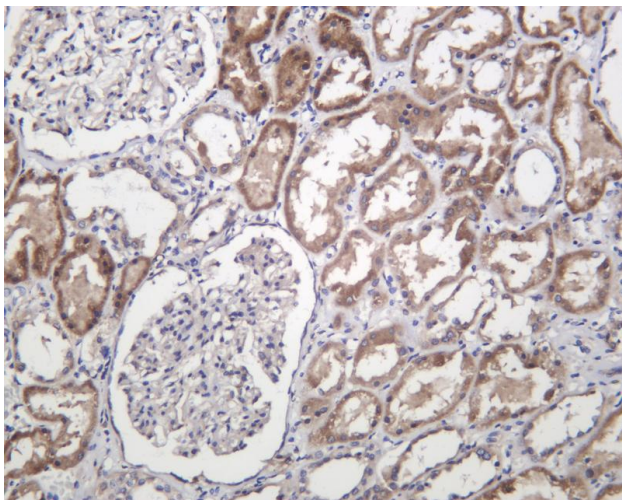


### Usage suggestions

This product can be used in immunological reaction related experiments. For more information, please consult technical personnel.



Various whole cell lysates were separated by 4-20% SDS-PAGE, and the membrane was blotted with anti-SLC40A1 antibody. The HRP-conjugated Goat anti-Rabbit IgG (H + L) antibody was used to detect the antibody. Lane 1: Rat spleen Predicted band size: 63kDa Observed band size: 80kDa



Human kidney was stained with anti-SLC40A1 Rabbit antibody

## 杭州臻优品生物科技有限公司

### 热销产品:

蛋白、一抗、抗体对、ELISA试剂盒、生化试剂盒  
CCK8试剂盒、QPCR检测试剂盒

### 检测服务:

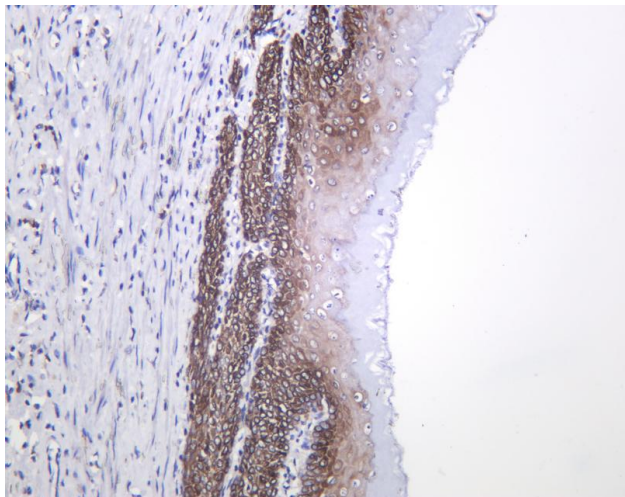
ELISA检测及定制服务 | 生化检测 | PCR、QPCR检测 | WB检测  
ICO-IP检测 | 切片 | 染色 | 免疫组化 | 免疫荧光 | 透射电镜全套  
| 宏基因组、转录组、基因组、蛋白组、代谢组测序



关注官网



关注客服



Rat stomach was stained with anti-SLC40A1 Rabbit antibody

## 杭州臻优品生物科技有限公司

### 热销产品:

蛋白、一抗、抗体对、ELISA试剂盒、生化试剂盒  
CCK8试剂盒、QPCR检测试剂盒

### 检测服务:

ELISA检测及定制服务 | 生化检测 | PCR、QPCR检测 | WB检测  
ICO-IP检测 | 切片 | 染色 | 免疫组化 | 免疫荧光 | 透射电镜全套  
| 宏基因组、转录组、基因组、蛋白组、代谢组测序



关注官网



关注客服