



IDE Rabbit mAb

Catalog No	YP-rAb-16988
Isotype	IgG
Reactivity	Human,Mouse,Rat
Applications	WB,IF,ELISA
Gene Name	IDE
Protein Name	Insulin-degrading enzyme
Purification Process	Protein A
Specificity	Endogenous
Formulation	PBS, 50% glycerol, 0.05% Proclin 300, 0.05%BSA
Source	Monoclonal, Rabbit,IgG
Dilution	WB 1:500-1:2000; IF 1:200-1:1000; ELISA 1:5000-1:20000;
Concentration	0.5 mg/ml
Purity	≥90%
Storage Stability	-15° C to -25° C/1 year(Do not lower than -25° C)
Synonyms	IDE ; Insulin-degrading enzyme ; Abeta-degrading protease ; Insulin protease ; Insulinase ; Insulysin
Observed Band	118kD
Calculated Molecular Weight	118kD
Cell Pathway	Cytoplasm, cytosol . Cell membrane . Secreted . Present at the cell surface of neuron cells. The membrane-associated isoform is approximately 5 kDa larger than the known cytosolic isoform.
Tissue Specificity	Detected in brain and in cerebrospinal fluid (at protein level).
Function	Catalytic activity:Degradation of insulin, glucagon and other polypeptides. No action on proteins.,cofactor:Binds 1 zinc ion per subunit.,Function:May play a role in the cellular processing of insulin. May be involved in intercellular peptide signaling.,PTM:The N-terminus is blocked.,similarity:Belongs to the peptidase M16 family.,subunit:Homodimer.,
Background	This gene encodes a zinc metallopeptidase that degrades intracellular insulin, and thereby terminates insulins activity, as well as participating in intercellular peptide signalling by degrading diverse peptides such as glucagon, amylin, bradykinin, and kallidin. The preferential affinity of this enzyme for insulin results in insulin-mediated inhibition of the degradation of other peptides such as beta-amyloid. Deficiencies in this protein's function are associated with

杭州臻优品生物科技有限公司

热销产品:

蛋白、一抗、抗体对、ELISA试剂盒、生化试剂盒
CCK8试剂盒、QPCR检测试剂盒

检测服务:

ELISA检测及定制服务 | 生化检测 | PCR、QPCR检测 | WB检测
ICO-IP检测 | 切片 | 染色 | 免疫组化 | 免疫荧光 | 透射电镜全套
| 宏基因组、转录组、基因组、蛋白组、代谢组测序



关注官网



关注客服



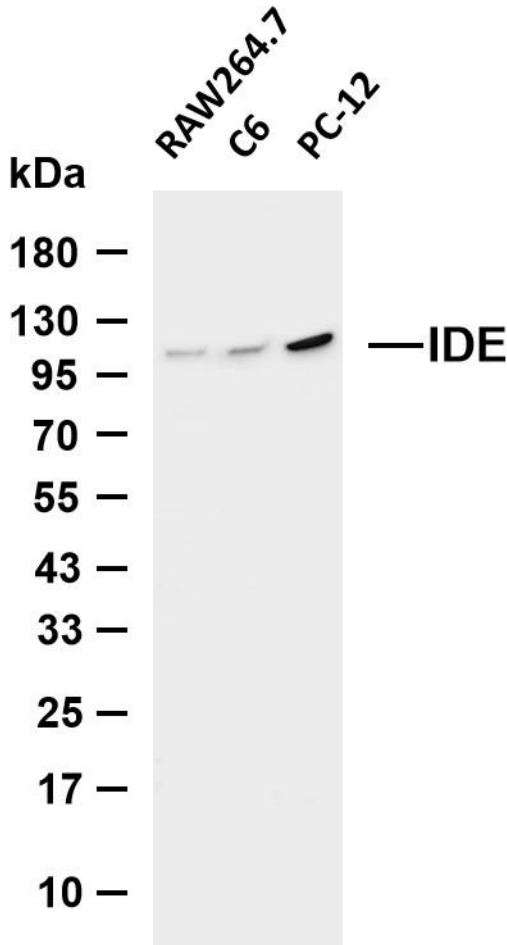
Alzheimer's disease and type 2 diabetes mellitus but mutations in this gene have not been shown to be causative for these diseases. This protein localizes primarily to the cytoplasm but in some cell types localizes to the extracellular space, cell membrane, peroxisome, and mitochondrion. Alternative splicing results in multiple transcript variants encoding distinct isoforms. Additional transcript variants have been describe

matters needing attention

Avoid repeated freezing and thawing!

Usage suggestions

This product can be used in immunological reaction related experiments. For more information, please consult technical personnel.



Various whole cell lysates were separated by 4-20% SDS-PAGE, and the membrane was blotted with anti-IDE antibody. The HRP-conjugated Goat anti-Rabbit IgG (H + L) antibody was used to detect the antibody. Lane 1: RAW264.7 Lane 2: C6 Lane 3: PC-12 Predicted band size: 118kDa Observed band size: 118kDa

