



IL-6 Rabbit mAb

Catalog No	YP-rAb-16985
Isotype	IgG
Reactivity	Mouse
Applications	WB,IF,IP,ELISA
Gene Name	IL6
Protein Name	Interleukin-6
Purification Process	Protein A
Specificity	Endogenous
Formulation	PBS, 50% glycerol, 0.05% Proclin 300, 0.05%BSA
Source	Monoclonal, Rabbit,IgG
Dilution	WB 1:2000-1:10000; IF 1:200-1:1000; ELISA 1:5000-1:20000; IP 1:50-1:200;
Concentration	0.5 mg/ml
Purity	≥90%
Storage Stability	-15° C to -25° C/1 year(Do not lower than -25° C)
Synonyms	IL6 ; IFNB2 ; Interleukin-6 ; IL-6 ; B-cell stimulatory factor 2 ; BSF-2 ; CTL differentiation factor ; CDF ; Hybridoma growth factor ; Interferon beta-2 ; IFN-beta-2
Observed Band	21kD
Calculated Molecular Weight	24kD
Cell Pathway	Secreted .
Tissue Specificity	Produced by skeletal muscle.
Function	Disease:At least 1 polymorphism in the IL6 gene renders HIV-infected men susceptible to Kaposi sarcoma [MIM:148000]. Kaposi sarcoma is a sarcoma of spindle cells mixed with angiomatous tissue. A relatively rare malignant skin tumor that results in multifocal purplish coloured papules or plaques that eventually form nodules. Most commonly seen in patients who suffer from AIDS.,Disease:Genetic variations in IL6 are associated with susceptibility to systemic juvenile rheumatoid arthritis [MIM:604302]. Systemic juvenile rheumatoid arthritis is juvenile chronic arthritis associated with severe, debilitating, extraarticular features, and occasionally fatal complications. Despite medical treatment, many children still experience early joint destruction, necessitating surgical replacement.,Function:IL-6 is a cytokine with a wide variety





of biological functions: it plays an essential role in the final differentiation of B-cells into Ig-secreting cells, it induces myeloma and plasmacytoma growth, it induces nerve cells differentiation, in hepatocytes it induces acute phase reactants.,online information:Interleukin-6 entry,online information:The Singapore human mutation and polymorphism database,polymorphism:Genetic variations in IL6 may be correlated with bone mineral density (BMD). Low BMD is a risk factor for osteoporotic fracture. Osteoporosis is characterized by reduced bone mineral density, disruption of bone microarchitecture, and the alteration of the amount and variety of non-collagenous proteins in bone. Osteoporotic bones are more at risk of fracture.,PTM:N- and O-glycosylated.,similarity:Belongs to the IL-6 superfamily.,

Background

This gene encodes a cytokine that functions in inflammation and the maturation of B cells. In addition, the encoded protein has been shown to be an endogenous pyrogen capable of inducing fever in people with autoimmune diseases or infections. The protein is primarily produced at sites of acute and chronic inflammation, where it is secreted into the serum and induces a transcriptional inflammatory response through interleukin 6 receptor, alpha. The functioning of this gene is implicated in a wide variety of inflammation-associated disease states, including susceptibility to diabetes mellitus and systemic juvenile rheumatoid arthritis. Alternative splicing results in multiple transcript variants. [provided by RefSeq, Dec 2015],

matters needing attention

Avoid repeated freezing and thawing!

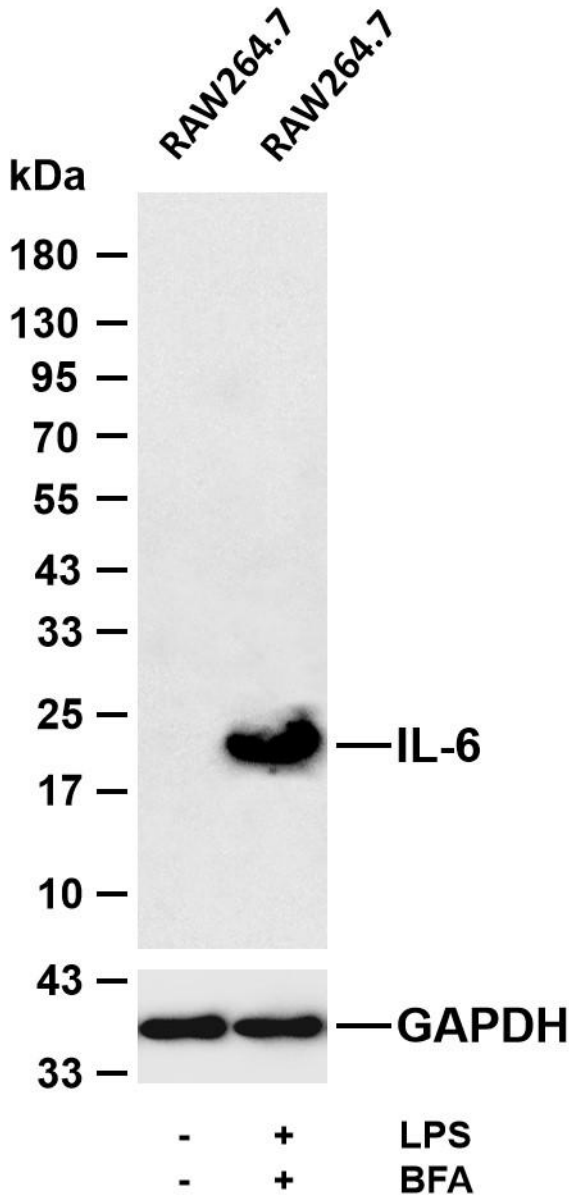
Usage suggestions

This product can be used in immunological reaction related experiments. For more information, please consult technical personnel.





Various whole cell lysates were separated by 4-20% SDS-PAGE, and the membrane was blotted with anti-IL-6 antibody. The HRP-conjugated Goat anti-Rabbit IgG (H + L) antibody was used to detect the antibody. Lane 1: RAW264.7 Lane 2: RAW264.7 was treated with LPS (100ng/ml) for 6 hou



杭州臻优品生物科技有限公司

热销产品:

蛋白、一抗、抗体对、ELISA试剂盒、生化试剂盒
CCK8试剂盒、QPCR检测试剂盒

检测服务:

ELISA检测及定制服务 | 生化检测 | PCR、QPCR检测 | WB检测
ICO-IP检测 | 切片 | 染色 | 免疫组化 | 免疫荧光 | 透射电镜全套
| 宏基因组、转录组、基因组、蛋白组、代谢组测序



关注官网



关注客服