



PPP3CA Rabbit mAb

Catalog No	YP-rAb-16980
Isotype	IgG
Reactivity	Human,Mouse,Rat
Applications	WB,IHC,IF,IP,ELISA
Gene Name	PPP3CA CALNA CNA
Protein Name	PP2B-A α
Purification Process	Protein A
Specificity	Endogenous
Formulation	PBS, 50% glycerol, 0.05% Proclin 300, 0.05%BSA
Source	Monoclonal, Rabbit,IgG
Dilution	IHC 1:200-1:1000; WB 1:2000-1:10000; IF 1:200-1:1000; ELISA 1:5000-1:20000; IP 1:50-1:200; Note: For IHC, we suggest antigen retrieval with TE buffer pH 9.0
Concentration	0.5 mg/ml
Purity	$\geq 90\%$
Storage Stability	-15° C to -25° C/1 year(Do not lower than -25° C)
Synonyms	PP2B-A α ; PPP3CA ; CALNA ; CNA ; Serine/threonine-protein phosphatase 2B catalytic subunit alpha isoform ; CAM-PRP catalytic subunit ; Calmodulin-dependent calcineurin A subunit alpha isoform
Observed Band	32,59kD
Calculated Molecular Weight	59kD
Cell Pathway	Cytoplasm . Cell membrane ; Peripheral membrane protein . Cell membrane, sarcolemma . Cytoplasm, myofibril, sarcomere, Z line . Cell projection, dendritic spine . Colocalizes with ACTN1 and MYOZ2 at the Z line in heart and skeletal muscle (By similarity). Recruited to the cell membrane by scaffold protein AKAP5 following L-type Ca(2+)-channel activation (PubMed:22343722). .
Tissue Specificity	Expressed in keratinocytes (at protein level) (PubMed:29043977). Expressed in lymphoblasts (at protein level) (PubMed:30254215).
Function	Catalytic activity:A phosphoprotein + H(2)O = a protein + phosphate.,cofactor:Binds 1 Fe(3+) ion per subunit.,cofactor:Binds 1 zinc ion per subunit.,Function:Calcium-dependent, calmodulin-stimulated protein phosphatase. This subunit may have a role in the calmodulin activation of calcineurin. Dephosphorylates HSPB1 and SSH1.,online information:Calcineurin entry,similarity:Belongs to the PPP phosphatase family.,similarity:Belongs to the PPP phosphatase family. PP-2B subfamily.,subcellular location:Colocalizes with





ACTN1 and MYOZ2 at the Z line in heart and skeletal muscle.,subunit:Composed of two components (A and B), the A component is the catalytic subunit and the B component confers calcium sensitivity. Interacts with TORC2/CRTC2, MYOZ1, MYOZ2 and MYOZ3.,

Background

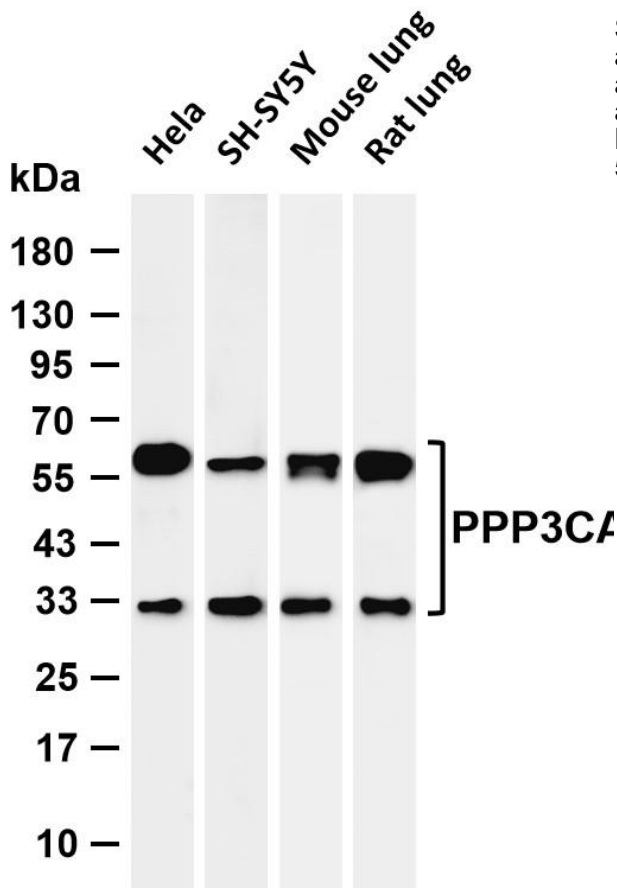
catalytic activity:A phosphoprotein + H(2)O = a protein + phosphate.,cofactor:binds 1 Fe(3+) ion per subunit.,cofactor:binds 1 zinc ion per subunit.,function:Calcium-dependent, calmodulin-stimulated protein phosphatase. This subunit may have a role in the calmodulin activation of calcineurin. Dephosphorylates HSPB1 and SSH1.,online information:Calcineurin entry,similarity:Belongs to the PPP phosphatase family.,similarity:Belongs to the PPP phosphatase family. PP-2B subfamily.,subcellular location:Colocalizes with ACTN1 and MYOZ2 at the Z line in heart and skeletal muscle.,subunit:Composed of two components (A and B), the A component is the catalytic subunit and the B component confers calcium sensitivity. Interacts with TORC2/CRTC2, MYOZ1, MYOZ2 and MYOZ3.,

matters needing attention

Avoid repeated freezing and thawing!

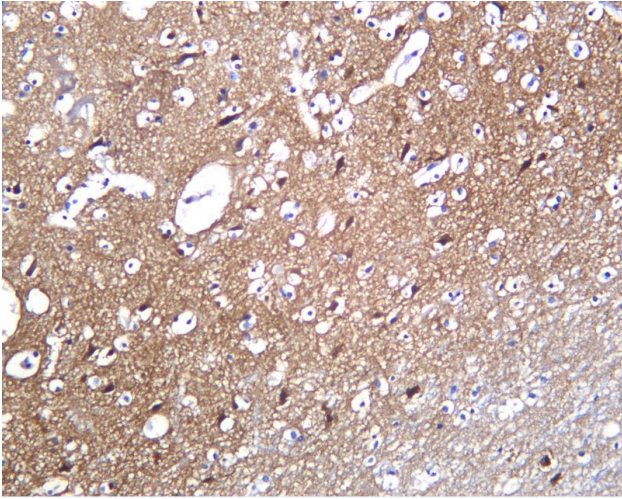
Usage suggestions

This product can be used in immunological reaction related experiments. For more information, please consult technical personnel.

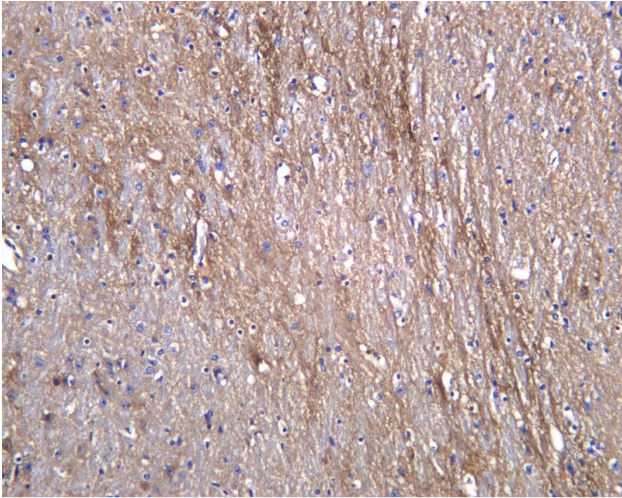


Various whole cell lysates were separated by 4-20% SDS-PAGE, and the membrane was blotted with anti-PPP3CA antibody. The HRP-conjugated Goat anti-Rabbit IgG (H + L) antibody was used to detect the antibody. Lane 1: HeLa Lane 2: SH-SY5Y Lane 3: Mouse lung Lane 4: Rat lung Predicted band size: 59kDa Observed band size: 32,59kDa





Human brain was stained with anti-PPP3CA Rabbit antibody



Mouse brain was stained with anti-PPP3CA Rabbit antibody

