



hnRNP A2/B1 Rabbit mAb

Catalog No	YP-rAb-16978
Isotype	IgG
Reactivity	Human,Mouse,Rat
Applications	WB,IHC,IF,ELISA
Gene Name	HNRNPA2B1
Protein Name	Heterogeneous nuclear ribonucleoproteins A2/B1
Purification Process	Protein A
Specificity	Endogenous
Formulation	PBS, 50% glycerol, 0.05% Proclin 300, 0.05%BSA
Source	Monoclonal, Rabbit,IgG
Dilution	IHC 1:200-1:1000; WB 1:2000-1:10000; IF 1:200-1:1000; ELISA 1:5000-1:20000; Note: For IHC, we suggest antigen retrieval with TE buffer pH 9.0
Concentration	0.5 mg/ml
Purity	≥90%
Storage Stability	-15° C to -25° C/1 year(Do not lower than -25° C)
Synonyms	HNRNPA2B1 ; HNRPA2B1 ; Heterogeneous nuclear ribonucleoproteins A2/B1 ; hnRNP A2/B1
Observed Band	37kD
Calculated Molecular Weight	37kD
Cell Pathway	Nucleus . Nucleus, nucleoplasm . Cytoplasm . Cytoplasmic granule . Secreted, extracellular exosome . Localized in cytoplasmic mRNP granules containing untranslated mRNAs (PubMed:17289661). Component of ribonucleosomes (PubMed:17289661). Not found in the nucleolus (PubMed:17289661). Found in exosomes following sumoylation (PubMed:24356509). . ; [Isoform A2]: Nucleus . Cytoplasm . Predominantly nucleoplasmic, however is also found in the cytoplasm of cells in some tissues (PubMed:17289661). .
Tissue Specificity	Brain,Cajal-Retzius cell,Cervix carcinoma,Epithelium
Function	Involved with pre-mRNA processing. Forms complexes (ribonucleosomes) with at least 20 other different hnRNP and heterogeneous nuclear RNA in the nucleus.,similarity:Contains 2 RRM (RNA recognition motif) domains.,subcellular location:Component of ribonucleosomes. Predominantly nucleoplasmic, however isoform A2 is also found in the cytoplasm of cells in some tissues. Not found in the nucleolus.,subunit:Identified in the spliceosome C complex, at least composed of AQR, ASCC3L1, C19orf29, CDC40, CDC5L, CRNKL1, DDX23, DDX41, DDX48,





DDX5, DGCR14, DHX35, DHX38, DHX8, EFTUD2, FRG1, GPATC1, HNRNPA1, HNRNPA2B1, HNRPA3, HNRNPC, HNRPF, HNRPH1, HNRPK, HNRPM, HNRNPR, HNRNPU, KIAA1160, KIAA1604, LSM2, LSM3, MAGOH, MORF1, PABPC1, PLRG1, PNN, PPIE, PPIL1, PPIL3, PPWD1, PRPF19, PRPF4B, PRPF6, PRPF8, RALY, RBM22, RBM8A, RBMX, SART1, SF3A1, SF3A2, SF3A3, SF3B1, SF3B2, SF3B3, SFRS1, SKIV2L2, SNRPA1, SNRPB, SNRPB2, SNRPD1, SNRPD2, SNRPD3, SNRPE, SNRPF, SNRPG, SNW1, SRRM1, SRRM2, SYF2, SYNCRIP, TFIP11, THOC4, U2AF1, WDR57, XAB2 and ZCCHC8.,

Background

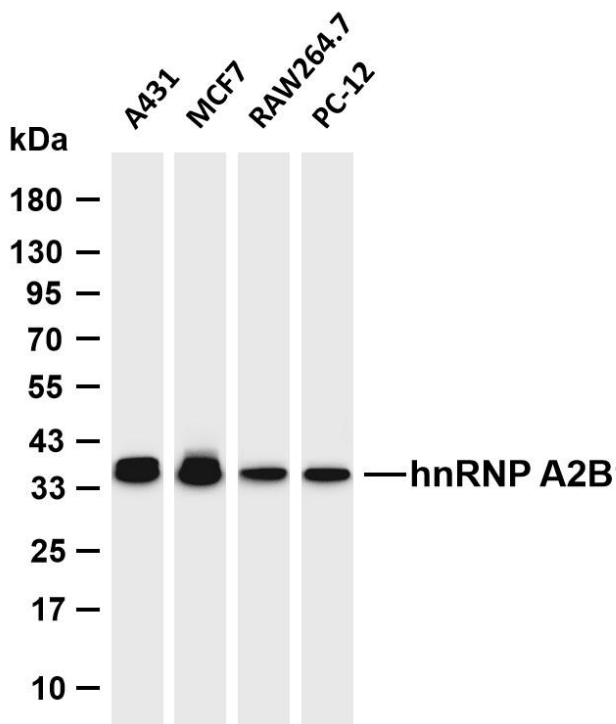
This gene belongs to the A/B subfamily of ubiquitously expressed heterogeneous nuclear ribonucleoproteins (hnRNPs). The hnRNPs are RNA binding proteins and they complex with heterogeneous nuclear RNA (hnRNA). These proteins are associated with pre-mRNAs in the nucleus and appear to influence pre-mRNA processing and other aspects of mRNA metabolism and transport. While all of the hnRNPs are present in the nucleus, some seem to shuttle between the nucleus and the cytoplasm. The hnRNP proteins have distinct nucleic acid binding properties. The protein encoded by this gene has two repeats of quasi-RRM domains that bind to RNAs. This gene has been described to generate two alternatively spliced transcript variants which encode different isoforms. [provided by RefSeq, Jul 2008],

matters needing attention

Avoid repeated freezing and thawing!

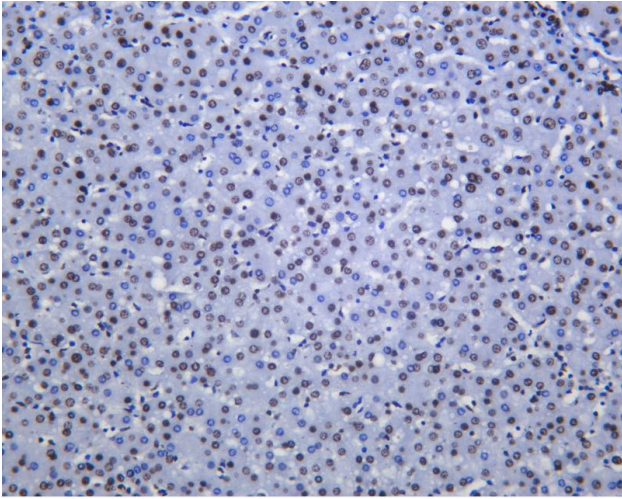
Usage suggestions

This product can be used in immunological reaction related experiments. For more information, please consult technical personnel.



Various whole cell lysates were separated by 4-20% SDS-PAGE, and the membrane was blotted with anti-hnRNP A2B1 antibody. The HRP-conjugated Goat anti-Rabbit IgG (H + L) antibody was used to detect the antibody. Lane 1: A431 Lane 2: MCF7 Lane 3: RAW264.7 Lane 4: PC-12 Predicted band size: 37kDa Observed band size: 37kDa





Human liver was stained with anti-hnRNP A2B1 Rabbit antibody

杭州臻优品生物科技有限公司

热销产品:

蛋白、一抗、抗体对、ELISA试剂盒、生化试剂盒
CCK8试剂盒、QPCR检测试剂盒

检测服务:

ELISA检测及定制服务 | 生化检测 | PCR、QPCR检测 | WB检测
ICO-IP检测 | 切片 | 染色 | 免疫组化 | 免疫荧光 | 透射电镜全套
| 宏基因组、转录组、基因组、蛋白组、代谢组测序



关注官网



关注客服