



ELAVL1 Rabbit mAb

Catalog No	YP-rAb-16976
Isotype	IgG
Reactivity	Human,Mouse,Rat
Applications	WB,IHC,IF,IP,ELISA
Gene Name	ELAVL1 HUR
Protein Name	ELAV-like protein 1 (Hu-antigen R) (HuR)
Purification Process	Protein A
Specificity	Endogenous
Formulation	PBS, 50% glycerol, 0.05% Proclin 300, 0.05%BSA
Source	Monoclonal, Rabbit,IgG
Dilution	IHC 1:200-1:1000; WB 1:2000-1:10000; IF 1:200-1:1000; ELISA 1:5000-1:20000; IP 1:50-1:200; Note: For IHC, we suggest antigen retrieval with TE buffer pH 9.0
Concentration	0.5 mg/ml
Purity	≥90%
Storage Stability	-15° C to -25° C/1 year(Do not lower than -25° C)
Synonyms	
Observed Band	36kD
Calculated Molecular Weight	36kD
Cell Pathway	Cytoplasm . Nucleus . Cytoplasm, Stress granule . Cytoplasm, P-body . Translocates into the cytoplasm following phosphorylation by MAPKAPK2 (PubMed:14517288). Likewise, phosphorylation by PRKCD promotes translocation from the nucleus into the cytoplasm, where it is associated with free and cytoskeleton-bound polysomes (PubMed:18285462).Localizes to the stress granules in the presence of PLEKHN1 (By similarity) . .
Tissue Specificity	Ubiquitous. Detected in brain, liver, thymus and muscle.
Function	Binds avidly to the AU-rich element in FOS and IL3/interleukin-3 mRNAs. In the case of the FOS AU-rich element, HUR binds to a core element of 27 nucleotides that contain AUUUA, AUUUUA, and AUUUUUA motifs.,PTM:Methylated at Arg-217 by CARM1 in macrophages in response to LPS challenge.,similarity:Belongs to the RRM elav family.,similarity:Contains 3 RRM (RNA recognition motif) domains.,subunit:Interacts with ANP32A.,tissue specificity:Ubiquitous.,





Background

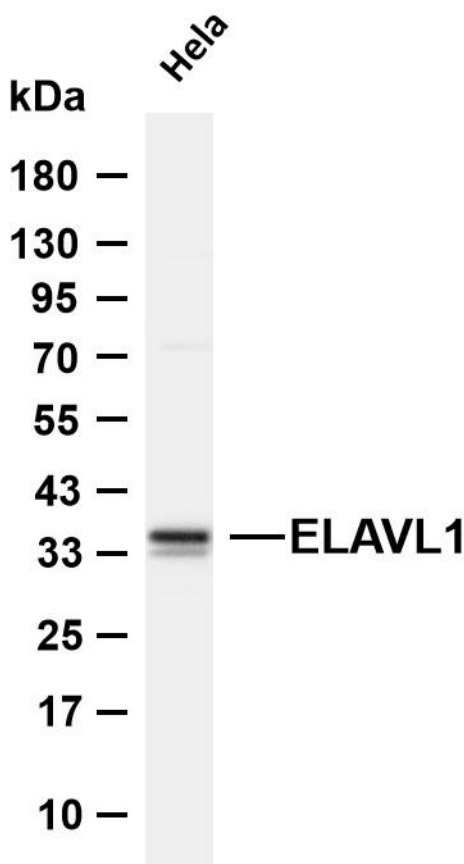
ELAV like RNA binding protein 1(ELAVL1) Homo sapiens The protein encoded by this gene is a member of the ELAVL family of RNA-binding proteins that contain several RNA recognition motifs, and selectively bind AU-rich elements (AREs) found in the 3' untranslated regions of mRNAs. AREs signal degradation of mRNAs as a means to regulate gene expression, thus by binding AREs, the ELAVL family of proteins play a role in stabilizing ARE-containing mRNAs. This gene has been implicated in a variety of biological processes and has been linked to a number of diseases, including cancer. It is highly expressed in many cancers, and could be potentially useful in cancer diagnosis, prognosis, and therapy. [provided by RefSeq, Sep 2012],

matters needing attention

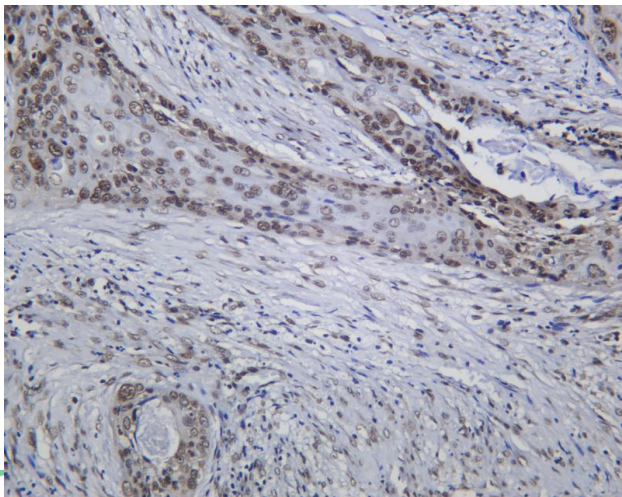
Avoid repeated freezing and thawing!

Usage suggestions

This product can be used in immunological reaction related experiments. For more information, please consult technical personnel.



Various whole cell lysates were separated by 4-20% SDS-PAGE, and the membrane was blotted with anti-ELAVL1 antibody. The HRP-conjugated Goat anti-Rabbit IgG (H + L) antibody was used to detect the antibody. Lane 1: HeLa Predicted band size: 36kDa Observed band size: 36kDa



Human cervical carcinoma was stained with anti-ELAVL1 Rabbit antibody

杭州臻优品生物科技有限公司

热销产品:

蛋白、一抗、抗体对、ELISA试剂盒、生化试剂盒
CCK8试剂盒、QPCR检测试剂盒

检测服务:

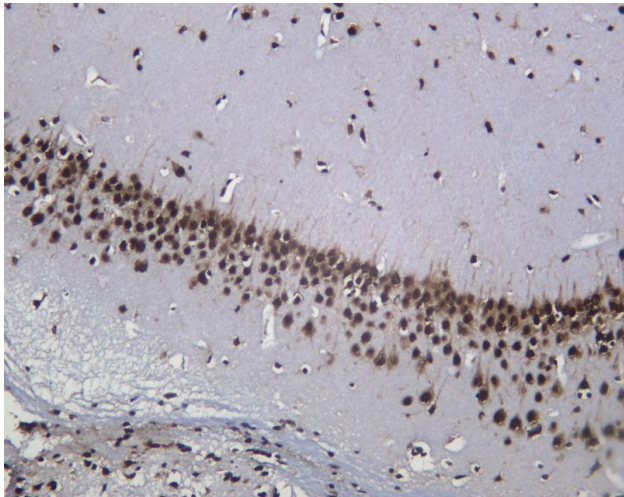
ELISA检测及定制服务 | 生化检测 | PCR、QPCR检测 | WB检测
ICO-IP检测 | 切片 | 染色 | 免疫组化 | 免疫荧光 | 透射电镜全套
| 宏基因组、转录组、基因组、蛋白组、代谢组测序



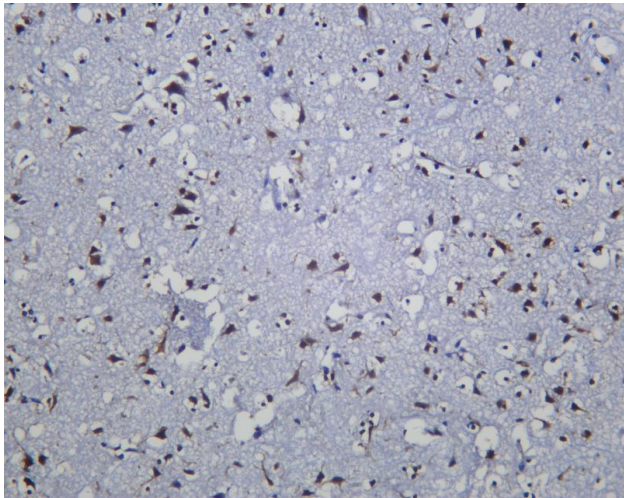
关注官网



关注客服



Mouse brain was stained with anti-ELAVL1 Rabbit antibody



Human brain was stained with anti-ELAVL1 Rabbit antibody

