



# RPE65 Rabbit mAb

<b>Catalog No</b>	YP-rAb-16975
<b>Isotype</b>	IgG
<b>Reactivity</b>	Human,Mouse,Rat
<b>Applications</b>	WB,IHC,IF,IP,ELISA
<b>Gene Name</b>	RPE65
<b>Protein Name</b>	Retinoid isomerohydrolase (All-trans-retinyl-palmitate hydrolase) (Retinal pigment epithelium-specific 65 kDa protein) (Retinol isomerase)
<b>Purification Process</b>	Protein A
<b>Specificity</b>	Endogenous
<b>Formulation</b>	PBS, 50% glycerol, 0.05% Proclin 300, 0.05%BSA
<b>Source</b>	Monoclonal, Rabbit,IgG
<b>Dilution</b>	IHC 1:100-1:200; WB 1:2000-1:10000; IF 1:200-1:1000; ELISA 1:5000-1:20000; IP 1:50-1:200; Note: For IHC, we suggest antigen retrieval with TE buffer pH 9.0
<b>Concentration</b>	0.5 mg/ml
<b>Purity</b>	≥90%
<b>Storage Stability</b>	-15° C to -25° C/1 year(Do not lower than -25° C)
<b>Synonyms</b>	
<b>Observed Band</b>	61kD
<b>Calculated Molecular Weight</b>	61kD
<b>Cell Pathway</b>	Cytoplasm . Cell membrane ; Lipid-anchor . Microsome membrane . Attached to the membrane by a lipid anchor when palmitoylated (membrane form), soluble when unpalmitoylated. Undergoes light-dependent intracellular transport to become more concentrated in the central region of the retina pigment epithelium cells. .
<b>Tissue Specificity</b>	Retina (at protein level). Retinal pigment epithelium specific.
<b>Function</b>	Critical isomerohydrolase in the retinoid cycle involved in regeneration of 11-cis-retinal, the chromophore of rod and cone opsins. Catalyzes the cleavage and isomerization of all-trans-retinyl fatty acid esters to 11-cis-retinol which is further oxidized by 11-cis retinol dehydrogenase to 11-cis-retinal for use as visual chromophore . Essential for the production of 11-cis retinal for both rod and cone photoreceptors . Also capable of catalyzing the isomerization of lutein to meso-zeaxanthin an eye-specific carotenoid . The soluble form binds vitamin A (all-trans-retinol), making it available for LRAT processing to all-trans-retinyl ester. The membrane form, palmitoylated by LRAT, binds all-trans-retinyl esters, making them available for IMH (isomerohydrolase) processing to all-cis-retinol. The

## 杭州臻优品生物科技有限公司

### 热销产品:

蛋白、一抗、抗体对、ELISA试剂盒、生化试剂盒  
CCK8试剂盒、QPCR检测试剂盒

### 检测服务:

ELISA检测及定制服务 | 生化检测 | PCR、QPCR检测 | WB检测  
ICO-IP检测 | 切片 | 染色 | 免疫组化 | 免疫荧光 | 透射电镜全套  
| 宏基因组、转录组、基因组、蛋白组、代谢组测序



关注官网



关注客服



soluble form is regenerated by transferring its palmitoyl groups onto 11-cis-retinol, a reaction catalyzed by LRAT (By similarity).

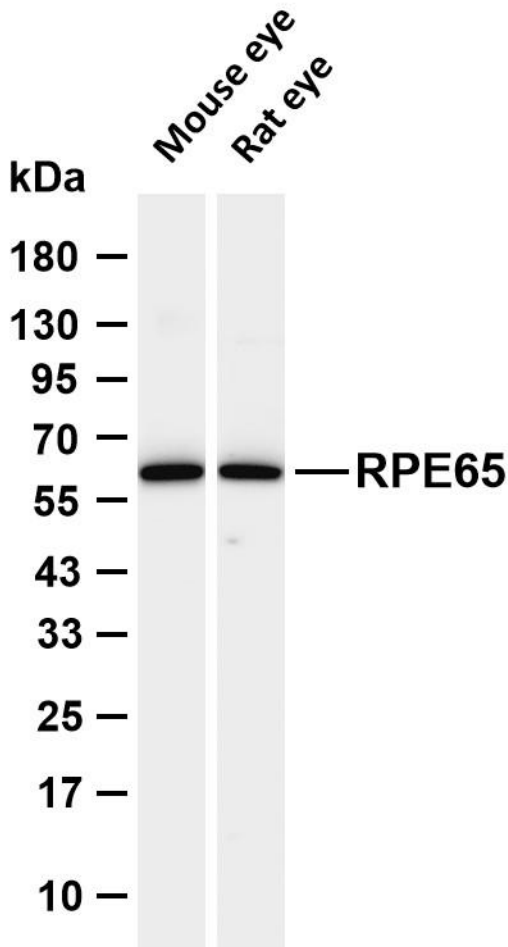
## Background

### matters needing attention

Avoid repeated freezing and thawing!

### Usage suggestions

This product can be used in immunological reaction related experiments. For more information, please consult technical personnel.



Various whole cell lysates were separated by 4-20% SDS-PAGE, and the membrane was blotted with anti-RPE65 antibody. The HRP-conjugated Goat anti-Rabbit IgG (H + L) antibody was used to detect the antibody. Lane 1: Mouse eye Lane 2: Rat eye Predicted band size: 61kDa Observed band size: 61kDa

