



# PGS2 Rabbit mAb

<b>Catalog No</b>	YP-rAb-16974
<b>Isotype</b>	IgG
<b>Reactivity</b>	Human,Mouse,Rat
<b>Applications</b>	WB,IHC,IF,ELISA
<b>Gene Name</b>	DCN SLRR1B
<b>Protein Name</b>	Decorin (Bone proteoglycan II) (PG-S2) (PG40)
<b>Purification Process</b>	Protein A
<b>Specificity</b>	Endogenous
<b>Formulation</b>	PBS, 50% glycerol, 0.05% Proclin 300, 0.05%BSA
<b>Source</b>	Monoclonal, Rabbit,IgG
<b>Dilution</b>	IHC 1:200-1:1000; WB 1:2000-1:10000; IF 1:200-1:1000; ELISA 1:5000-1:20000; Note: For IHC, we suggest antigen retrieval with TE buffer pH 9.0
<b>Concentration</b>	0.5 mg/ml
<b>Purity</b>	≥90%
<b>Storage Stability</b>	-15° C to -25° C/1 year(Do not lower than -25° C)
<b>Synonyms</b>	
<b>Observed Band</b>	95kD
<b>Calculated Molecular Weight</b>	40kD
<b>Cell Pathway</b>	Secreted, extracellular space, extracellular matrix.
<b>Tissue Specificity</b>	Liver,Lung,Small intestine,Tongue,
<b>Function</b>	Disease:Defects in DCN are the cause of congenital stromal corneal dystrophy (CSCD) [MIM:610048]. Corneal dystrophies are inherited, bilateral, primary alterations of the cornea that are not associated with prior inflammation or secondary to systemic disease. Most show autosomal dominant inheritance.,Function:May affect the rate of fibrils formation.,PTM:The attached glycosaminoglycan chain can be either chondroitin sulfate or dermatan sulfate depending upon the tissue of origin.,similarity:Belongs to the small leucine-rich proteoglycan (SLRP) family. Class I subfamily.,similarity:Contains 12 LRR (leucine-rich) repeats.,subunit:Binds to type I and type II collagen, fibronectin and TGF-beta. Forms a ternary complex with MFAP2 and ELN. Interacts with DPT.,
<b>Background</b>	This gene encodes a member of the small leucine-rich proteoglycan family of proteins. Alternative splicing results in multiple transcript variants, at least one of





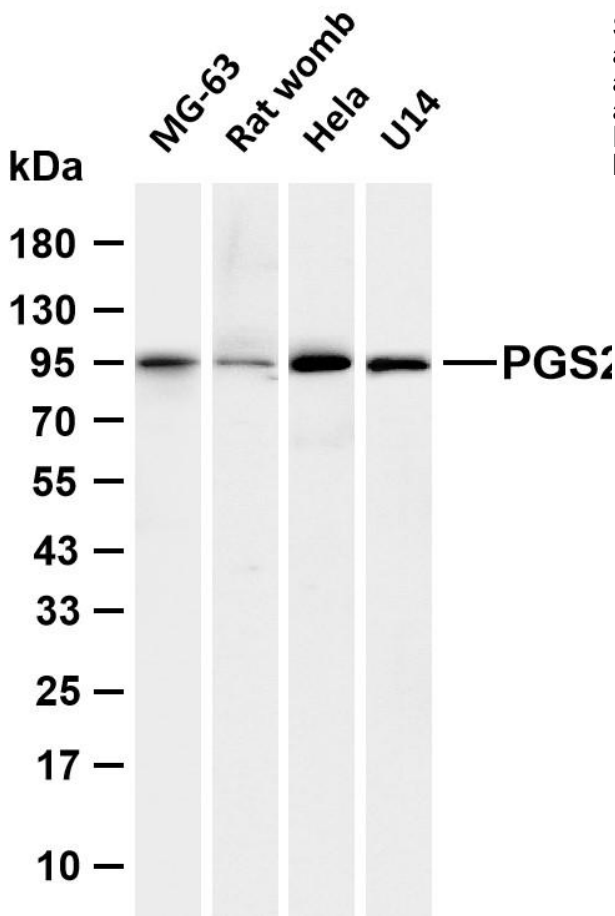
which encodes a preproprotein that is proteolytically processed to generate the mature protein. This protein plays a role in collagen fibril assembly. Binding of this protein to multiple cell surface receptors mediates its role in tumor suppression, including a stimulatory effect on autophagy and inflammation and an inhibitory effect on angiogenesis and tumorigenesis. This gene and the related gene biglycan are thought to be the result of a gene duplication. Mutations in this gene are associated with congenital stromal corneal dystrophy in human patients. [provided by RefSeq, Nov 2015],

**matters needing attention**

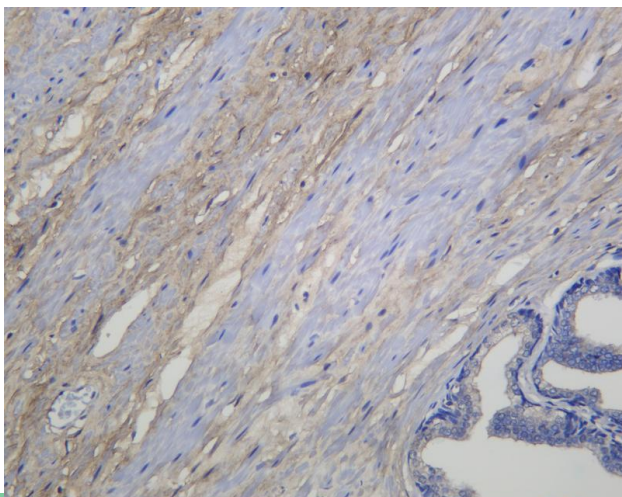
Avoid repeated freezing and thawing!

**Usage suggestions**

This product can be used in immunological reaction related experiments. For more information, please consult technical personnel.



Various whole cell lysates were separated by 4-20% SDS-PAGE, and the membrane was blotted with anti-PGS2 antibody. The HRP-conjugated Goat anti-Rabbit IgG (H + L) antibody was used to detect the antibody. Lane 1: MG-63 Lane 2: Rat womb Lane 3: HeLa Lane 4: C Predicted band size: 40kDa Observed band size: 95kDa



Human prostate was stained with anti-PGS2 Rabbit antibody

**杭州臻优品生物科技有限公司**

**热销产品:**

蛋白、一抗、抗体对、ELISA试剂盒、生化试剂盒  
CCK8试剂盒、QPCR检测试剂盒

**检测服务:**

ELISA检测及定制服务 | 生化检测 | PCR、QPCR检测 | WB检测  
ICO-IP检测 | 切片 | 染色 | 免疫组化 | 免疫荧光 | 透射电镜全套  
| 宏基因组、转录组、基因组、蛋白组、代谢组测序



关注官网



关注客服