



Neddylin Rabbit mAb

Catalog No	YP-rAb-16972
Isotype	IgG
Reactivity	Human,Mouse,Rat
Applications	WB,IHC,IF,IP,ELISA
Gene Name	NEDD8
Protein Name	NEDD8
Purification Process	Protein A
Specificity	Endogenous
Formulation	PBS, 50% glycerol, 0.05% Proclin 300, 0.05%BSA
Source	Monoclonal, Rabbit,IgG
Dilution	IHC 1:200-1:1000; WB 1:2000-1:10000; IF 1:200-1:1000; ELISA 1:5000-1:20000; IP 1:50-1:200; Note: For IHC, we suggest antigen retrieval with TE buffer pH 9.0
Concentration	0.5 mg/ml
Purity	≥90%
Storage Stability	-15° C to -25° C/1 year(Do not lower than -25° C)
Synonyms	NEDD8 ; NEDD8 ; Neddylin ; Neural precursor cell expressed developmentally down-regulated protein 8 ; NEDD-8 ; Ubiquitin-like protein Nedd8
Observed Band	9kD
Calculated Molecular Weight	9kD
Cell Pathway	Nucleus . Mainly nuclear. .
Tissue Specificity	Highly expressed in heart, skeletal muscle, spleen, thymus, prostate, testis, ovary, colon and leukocytes.
Function	Ubiquitin-like protein which plays an important role in cell cycle control and embryogenesis. Covalent attachment to its substrates requires prior activation by the E1 complex UBE1C-APPBP1 and linkage to the E2 enzyme UBE2M. Attachment of NEDD8 to cullins activates their associated E3 ubiquitin ligase activity, and thus promotes polyubiquitination and proteasomal degradation of cyclins and other regulatory proteins.,PTM:Cleavage of precursor form by UCHL3 or SENP8 is necessary for function.,similarity:Belongs to the ubiquitin family.,subcellular location:Mainly nuclear.,subunit:Directly interacts with NUB1 and AHR. Covalently attached to cullins and p53.,tissue specificity:Highly expressed in heart, skeletal muscle, spleen, thymus, prostate, testis, ovary, colon and leukocytes.,





Background

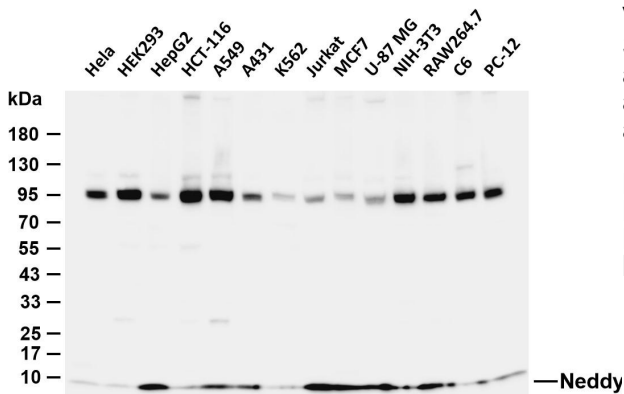
function: Ubiquitin-like protein which plays an important role in cell cycle control and embryogenesis. Covalent attachment to its substrates requires prior activation by the E1 complex UBE1C-APPBP1 and linkage to the E2 enzyme UBE2M. Attachment of NEDD8 to cullins activates their associated E3 ubiquitin ligase activity, and thus promotes polyubiquitination and proteasomal degradation of cyclins and other regulatory proteins. PTM: Cleavage of precursor form by UCHL3 or SENP8 is necessary for function. similarity: Belongs to the ubiquitin family. subcellular location: Mainly nuclear. subunit: Directly interacts with NUB1 and AHR. Covalently attached to cullins and p53. tissue specificity: Highly expressed in heart, skeletal muscle, spleen, thymus, prostate, testis, ovary, colon and leukocytes.

matters needing attention

Avoid repeated freezing and thawing!

Usage suggestions

This product can be used in immunological reaction related experiments. For more information, please consult technical personnel.



Various whole cell lysates were separated by 4-20% SDS-PAGE, and the membrane was blotted with anti-Neddylin antibody. The HRP-conjugated Goat anti-Rabbit IgG (H + L) antibody was used to detect the antibody. Lane 1: HeLa Lane 2: HEK293 Lane 3: HepG2 Lane 4: HCT-116 Lane 5: A549 Lane 6: A431 Lane 7: K562 Lane 8: Jurkat Lane 9: MCF7 Lane 10: U-87 MG Lane 11: NIH-3T3 Lane 12: RAW264.7 Lane 13: C6 Lane 14: PC-12 Predicted band size: 9kDa Observed band size: 9kDa

