



# GABARAP+GABARAPL1/2 Rabbit mAb

<b>Catalog No</b>	YP-rAb-16969
<b>Isotype</b>	IgG
<b>Reactivity</b>	Human,Mouse,Rat
<b>Applications</b>	WB,IHC,IF,ELISA
<b>Gene Name</b>	GABARAP GABARAPL1 GABARAPL2
<b>Protein Name</b>	Gamma-aminobutyric acid receptor-associated protein;Gamma-aminobutyric acid receptor-associated protein-like 1;Gamma-aminobutyric acid receptor-associated protein-like 2
<b>Purification Process</b>	Protein A
<b>Specificity</b>	Endogenous
<b>Formulation</b>	PBS, 50% glycerol, 0.05% Proclin 300, 0.05%BSA
<b>Source</b>	Monoclonal, Rabbit,IgG
<b>Dilution</b>	IHC 1:1000-1:4000; WB 1:2000-1:10000; IF 1:200-1:1000; ELISA 1:5000-1:20000; Note: For IHC, we suggest antigen retrieval with TE buffer pH 9.0
<b>Concentration</b>	0.5 mg/ml
<b>Purity</b>	≥90%
<b>Storage Stability</b>	-15° C to -25° C/1 year(Do not lower than -25° C)
<b>Synonyms</b>	FLC3B,HT004,GEC1,FLC3A,GEF2,GABA(A) receptor-associated protein,GABA(A) receptor-associated protein-like 1,GABA(A) receptor-associated protein-like 2,
<b>Observed Band</b>	18kD
<b>Calculated Molecular Weight</b>	14kD
<b>Cell Pathway</b>	Cytoplasmic vesicle, autophagosome . Cytoplasmic vesicle membrane ; Lipid-anchor . Cytoplasm, cytoskeleton . Endoplasmic reticulum . Golgi apparatus .
<b>Tissue Specificity</b>	Heart, brain, placenta, liver, skeletal muscle, kidney and pancreas.
<b>Function</b>	May play a role in intracellular transport of GABA(A) receptors and its interaction with the cytoskeleton.,similarity:Belongs to the MAP1 LC3 family.,subcellular location:Largely associated with intracellular membrane structures including the Golgi apparatus and post-synaptic cisternae. Colocalizes with microtubules.,subunit:Interacts with GPHN and NSF (By similarity). Interacts with GABRG2, beta-tubulin and ULK1.,tissue specificity:Heart, brain, placenta, liver, skeletal muscle, kidney and pancreas.,





## Background

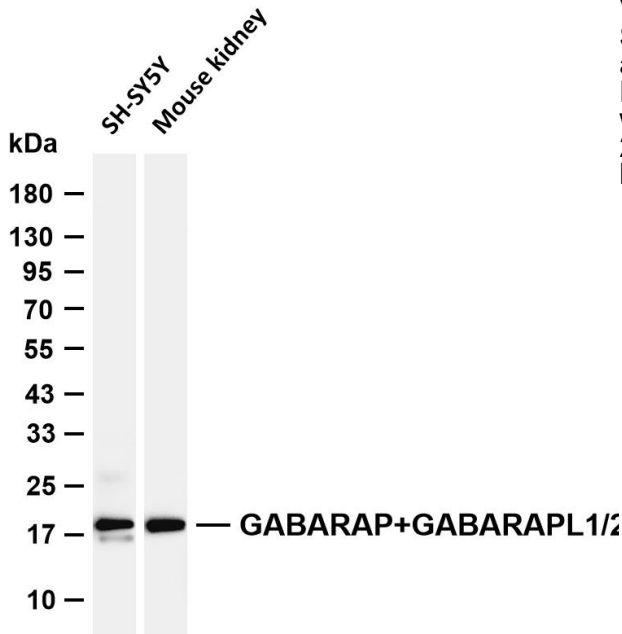
Gamma-aminobutyric acid A receptors [GABA(A) receptors] are ligand-gated chloride channels that mediate inhibitory neurotransmission. This gene encodes GABA(A) receptor-associated protein, which is highly positively charged in its N-terminus and shares sequence similarity with light chain-3 of microtubule-associated proteins 1A and 1B. This protein clusters neurotransmitter receptors by mediating interaction with the cytoskeleton. [provided by RefSeq, Jul 2008],

## matters needing attention

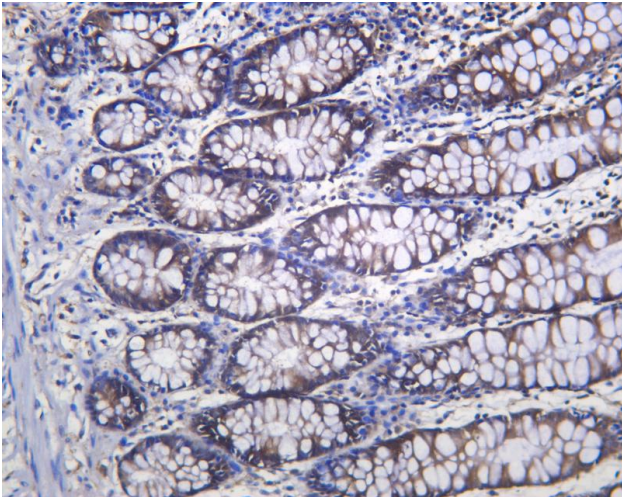
Avoid repeated freezing and thawing!

## Usage suggestions

This product can be used in immunological reaction related experiments. For more information, please consult technical personnel.



Various whole cell lysates were separated by 4-20% SDS-PAGE, and the membrane was blotted with anti-GABARAP+GABARAPL1/L2 antibody. The HRP-conjugated Goat anti-Rabbit IgG (H + L) antibody was used to detect the antibody. Lane 1: SH-SY5Y Lane 2: Mouse kidney Predicted band size: 14kDa Observed band size: 18kDa



Human colon was stained with anti-GABARAP+GABARAPL1/2 Rabbit antibody

