



# COPB Rabbit mAb

<b>Catalog No</b>	YP-rAb-16968
<b>Isotype</b>	IgG
<b>Reactivity</b>	Human,Mouse,Rat
<b>Applications</b>	WB,IF,ELISA
<b>Gene Name</b>	COPB1 COPB MSTP026
<b>Protein Name</b>	Coatomer subunit beta (Beta-coat protein) (Beta-COP)
<b>Purification Process</b>	Protein A
<b>Specificity</b>	Endogenous
<b>Formulation</b>	PBS, 50% glycerol, 0.05% Proclin 300, 0.05%BSA
<b>Source</b>	Monoclonal, Rabbit,IgG
<b>Dilution</b>	WB 1:2000-1:10000; IF 1:200-1:1000; ELISA 1:5000-1:20000;
<b>Concentration</b>	0.5 mg/ml
<b>Purity</b>	≥90%
<b>Storage Stability</b>	-15° C to -25° C/1 year(Do not lower than -25° C)
<b>Synonyms</b>	Coatomer subunit beta ; Beta-coat protein ; Beta-COP ;
<b>Observed Band</b>	107kD
<b>Calculated Molecular Weight</b>	107kD
<b>Cell Pathway</b>	Cytoplasm. Golgi apparatus membrane ; Peripheral membrane protein ; Cytoplasmic side . Cytoplasmic vesicle, COPI-coated vesicle membrane; Peripheral membrane protein ; Cytoplasmic side . Cell membrane . Endoplasmic reticulum-Golgi intermediate compartment . The coatomer is cytoplasmic or polymerized on the cytoplasmic side of the Golgi, as well as on the vesicles/buds originating from it (By similarity). Proteolytic cleavage by CAPN8 triggers translocation from Golgi to cytoplasm (By similarity). Found in perinuclear vesicular-tubular clusters (VTCs) and in the Golgi region where associated with vesicles, buds and rims of the Golgi stack (By similarity). Occasionally present at the trans-side of Golgi, but mainly present at the cis-Golgi side in transitional areas (TA), on so-called peripheral elements (PE) consisting of tubules and vesicles located between the cup-shaped transitional elements (TE) of the rough endoplasmic reticulum (RER) and the cis-most Golgi cisternae (By similarity). Present in cytoplasm, not associated with visible coats or membranes, with a minor fraction present on small clusters of tubules and vesicles (By similarity). Some association with high-density and low-density microsomes and mitochondria/nuclei fraction (By similarity). Very little found in plasma membrane fraction (PubMed:20362547). .

## 杭州臻优品生物科技有限公司

### 热销产品:

蛋白、一抗、抗体对、ELISA试剂盒、生化试剂盒  
CCK8试剂盒、QPCR检测试剂盒

### 检测服务:

ELISA检测及定制服务 | 生化检测 | PCR、QPCR检测 | WB检测  
ICO-IP检测 | 切片 | 染色 | 免疫组化 | 免疫荧光 | 透射电镜全套  
| 宏基因组、转录组、基因组、蛋白组、代谢组测序



关注官网



关注客服



**Tissue Specificity**

Amygdala,Aorta,Lymphoid,Testis,

**Function**

The coatomer is a cytosolic protein complex that binds to dilysine motifs and reversibly associates with Golgi non-clathrin-coated vesicles, which further mediate biosynthetic protein transport from the ER, via the Golgi up to the trans Golgi network. Coatomer complex is required for budding from Golgi membranes, and is essential for the retrograde Golgi-to-ER transport of dilysine-tagged proteins. In mammals, the coatomer can only be recruited by membranes associated to ADP-ribosylation factors (ARFs), which are small GTP-binding proteins; the complex also influences the Golgi structural integrity, as well as the processing, activity, and endocytic recycling of LDL receptors.,miscellaneous:Brefeldin A induces dissociation from the Golgi of the beta-COP and presumably the other coatomer subunits.,PTM:Proteolytically cleaved between Ser-528 and Ser-529 by CAPN8.,subcellular location:The coatomer is cytoplasmic or polymerized on the cytoplasmic side of the Golgi, as well as on the vesicles/buds originating from it. Proteolytic cleavage by CAPN8 triggers translocation from Golgi to cytoplasm.,subunit:Oligomeric complex that consists of at least the alpha, beta, beta', gamma, delta, epsilon and zeta subunits. Interacts with CAPN8 (By similarity). Interacts with HIV-1 Nef. Interacts with SCYL1.,

**Background**

This gene encodes a protein subunit of the coatomer complex associated with non-clathrin coated vesicles. The coatomer complex, also known as the coat protein complex 1, forms in the cytoplasm and is recruited to the Golgi by activated guanosine triphosphatases. Once at the Golgi membrane, the coatomer complex may assist in the movement of protein and lipid components back to the endoplasmic reticulum. Alternatively spliced transcript variants have been described. [provided by RefSeq, Jan 2009],

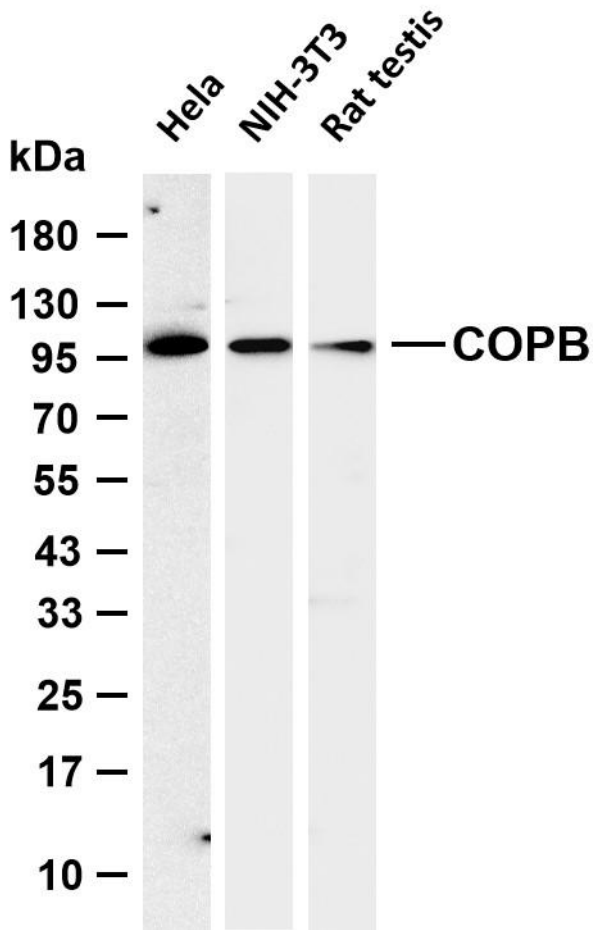
**matters needing attention**

Avoid repeated freezing and thawing!

**Usage suggestions**

This product can be used in immunological reaction related experiments. For more information, please consult technical personnel.





Various whole cell lysates were separated by 4-20% SDS-PAGE, and the membrane was blotted with anti-COPB antibody. The HRP-conjugated Goat anti-Rabbit IgG (H + L) antibody was used to detect the antibody. Lane 1: HeLa Lane 2: NIH-3T3 Lane 3: Rat testis Predicted band size: 107kDa Observed band size: 107kDa

## 杭州臻优品生物科技有限公司

### 热销产品:

蛋白、一抗、抗体对、ELISA试剂盒、生化试剂盒  
CCK8试剂盒、QPCR检测试剂盒

### 检测服务:

ELISA检测及定制服务 | 生化检测 | PCR、QPCR检测 | WB检测  
ICO-IP检测 | 切片 | 染色 | 免疫组化 | 免疫荧光 | 透射电镜全套  
| 宏基因组、转录组、基因组、蛋白组、代谢组测序



关注官网



关注客服