



PRLR Rabbit mAb

Catalog No	YP-rAb-16967
Isotype	IgG
Reactivity	Human,Mouse,Rat
Applications	WB,IHC,IF,ELISA
Gene Name	PRLR
Protein Name	Prolactin receptor
Purification Process	Protein A
Specificity	Endogenous
Formulation	PBS, 50% glycerol, 0.05% Proclin 300, 0.05%BSA
Source	Monoclonal, Rabbit,IgG
Dilution	IHC 1:200-1:500; WB 1:500-1:2000; IF 1:200-1:1000; ELISA 1:5000-1:20000; Note: For IHC, we suggest antigen retrieval with TE buffer pH 9.0
Concentration	0.5 mg/ml
Purity	≥90%
Storage Stability	-15° C to -25° C/1 year(Do not lower than -25° C)
Synonyms	PRL-R
Observed Band	95kD
Calculated Molecular Weight	70kD
Cell Pathway	Membrane ; Single-pass type I membrane protein .; [Isoform 7]: Secreted.
Tissue Specificity	Expressed in breast, placenta, kidney, liver and pancreas.
Function	Domain:The box 1 motif is required for JAK interaction and/or activation.,Domain:The WSXWS motif appears to be necessary for proper protein folding and thereby efficient intracellular transport and cell-surface receptor binding.,Function:This is a receptor for the anterior pituitary hormone prolactin (PRL). Isoforms 4 and 6 are unable to transduce prolactin signaling.,similarity:Belongs to the type I cytokine receptor family. Type 1 subfamily.,similarity:Contains 2 fibronectin type-III domains.,subcellular location:Isoform 7.,subunit:Interacts with SMARCA1. Interacts with GH1.,tissue specificity:Expressed in breast, placenta, kidney, liver and pancreas.,
Background	This gene encodes a receptor for the anterior pituitary hormone, prolactin, and belongs to the type I cytokine receptor family. Prolactin-dependent signaling occurs as the result of ligand-induced dimerization of the prolactin receptor.





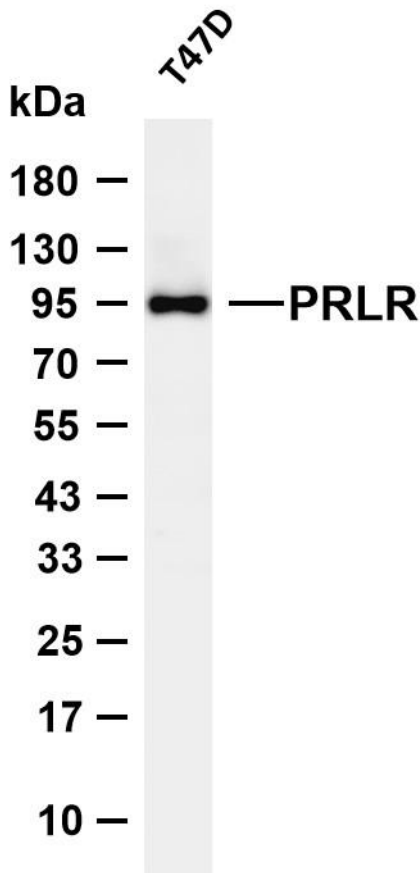
Several alternatively spliced transcript variants encoding different membrane-bound and soluble isoforms have been described for this gene, which may function to modulate the endocrine and autocrine effects of prolactin in normal tissue and cancer. [provided by RefSeq, Feb 2011],

matters needing attention

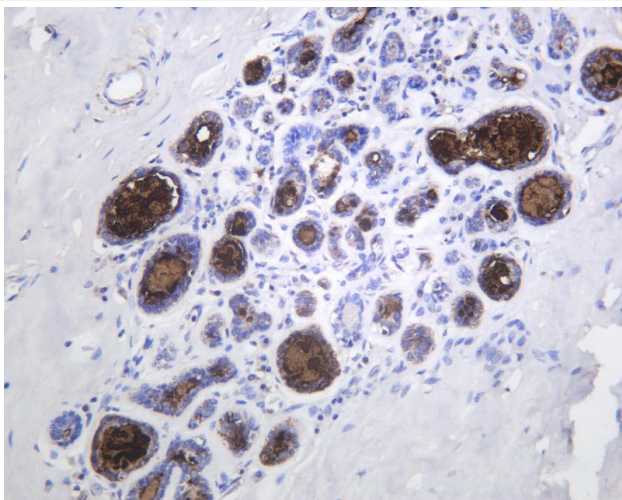
Avoid repeated freezing and thawing!

Usage suggestions

This product can be used in immunological reaction related experiments. For more information, please consult technical personnel.



Various whole cell lysates were separated by 4-20% SDS-PAGE, and the membrane was blotted with anti-PRLR antibody. The HRP-conjugated Goat anti-Rabbit IgG (H + L) antibody was used to detect the antibody. Lane 1: T47D Predicted band size: 70kDa Observed band size: 95kDa



Human breast was stained with anti-PRLR Rabbit antibody

杭州臻优品生物科技有限公司

热销产品:

蛋白、一抗、抗体对、ELISA试剂盒、生化试剂盒
CCK8试剂盒、QPCR检测试剂盒

检测服务:

ELISA检测及定制服务 | 生化检测 | PCR、QPCR检测 | WB检测
ICO-IP检测 | 切片 | 染色 | 免疫组化 | 免疫荧光 | 透射电镜全套
| 宏基因组、转录组、基因组、蛋白组、代谢组测序



关注官网



关注客服