



SLC11A2 Rabbit mAb

Catalog No	YP-rAb-16962
Isotype	IgG
Reactivity	Human
Applications	WB,IF,IP,ELISA
Gene Name	SLC11A2 DCT1 DMT1 NRAMP2 OK/SW-cl.20
Protein Name	Natural resistance-associated macrophage protein 2
Purification Process	Protein A
Specificity	Endogenous
Formulation	PBS, 50% glycerol, 0.05% Proclin 300, 0.05%BSA
Source	Monoclonal, Rabbit,IgG
Dilution	WB 1:2000-1:10000; IF 1:200-1:1000; ELISA 1:5000-1:20000; IP 1:50-1:200;
Concentration	0.5 mg/ml
Purity	≥90%
Storage Stability	-15° C to -25° C/1 year(Do not lower than -25° C)
Synonyms	Natural resistance-associated macrophage protein 2 ; NRAMP 2 ; Divalent cation transporter 1 ; Divalent metal transporter 1 ; DMT-1 ;
Observed Band	80-100kD
Calculated Molecular Weight	62kD
Cell Pathway	[Isoform 2]: Cell membrane ; Multi-pass membrane protein . Early endosome . ; Endosome membrane ; Multi-pass membrane protein . Mitochondrion outer membrane ; Multi-pass membrane protein. Cell membrane ; Multi-pass membrane protein . Also found in extracellular vesicles different from exosomes. .
Tissue Specificity	Ubiquitously expressed. Isoform 1 is highly expressed in brain. Isoform 2 is highly expressed in spleen, thymus and pancreas. Isoform 3 and isoform 4 are abundantly expressed in duodenum and kidney.
Function	Disease:Defects in SLC11A2 are a cause of hypochromic microcytic anemia [MIM:206100]. The disease is characterized by an abnormal hemoglobin content in the erythrocytes which are reduced in size. It may be hereditary or acquired. Mutations in SLC11A2 are associated with progressive liver iron overload and normal to moderately elevated serum ferritin levels.,Function:Macrophage-specific membrane transport. Important in metal transport, in particular iron.,similarity:Belongs to the NRAMP family.,tissue specificity:Expressed at low levels in all tissues analyzed.,





Background

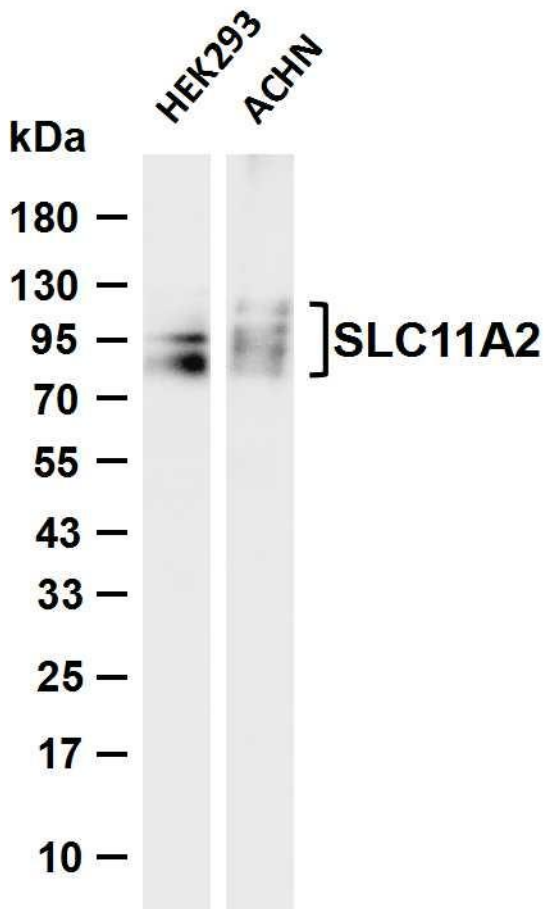
This gene encodes a member of the solute carrier family 11 protein family. The product of this gene transports divalent metals and is involved in iron absorption. Mutations in this gene are associated with hypochromic microcytic anemia with iron overload. A related solute carrier family 11 protein gene is located on chromosome 2. Multiple transcript variants encoding different isoforms have been found for this gene.[provided by RefSeq, Apr 2010],

matters needing attention

Avoid repeated freezing and thawing!

Usage suggestions

This product can be used in immunological reaction related experiments. For more information, please consult technical personnel.



Various whole cell lysates were separated by 4-20% SDS-PAGE, and the membrane was blotted with anti-SLC11A2 antibody. The HRP-conjugated Goat anti-Rabbit IgG (H + L) antibody was used to detect the antibody. Lane 1: HEK293 Lane 2: ACHN Predicted band size: 62kDa Observed band size: 80-100kDa

