



# Calpain 2 Rabbit mAb

<b>Catalog No</b>	YP-rAb-16959
<b>Isotype</b>	IgG
<b>Reactivity</b>	Human,Mouse,Rat
<b>Applications</b>	WB,IF,IP,ELISA
<b>Gene Name</b>	CAPN2 CANPL2
<b>Protein Name</b>	Calpain-2 catalytic subunit
<b>Purification Process</b>	Protein A
<b>Specificity</b>	Endogenous
<b>Formulation</b>	PBS, 50% glycerol, 0.05% Proclin 300, 0.05%BSA
<b>Source</b>	Monoclonal, Rabbit,IgG
<b>Dilution</b>	WB 1:1000-1:20000; IF 1:200-1:1000; ELISA 1:5000-1:20000; IP 1:50-1:200;
<b>Concentration</b>	0.5 mg/ml
<b>Purity</b>	≥90%
<b>Storage Stability</b>	-15° C to -25° C/1 year(Do not lower than -25° C)
<b>Synonyms</b>	CAPN2 ; CANPL2 ; Calpain-2 catalytic subunit ; Calcium-activated neutral proteinase 2 ; CANP 2 ; Calpain M-type ; Calpain large polypeptide L2 ; Calpain-2 large subunit ; Millimolar-calpain ; M-calpain
<b>Observed Band</b>	75kD
<b>Calculated Molecular Weight</b>	80kD
<b>Cell Pathway</b>	Cytoplasm. Cell membrane. Translocates to the plasma membrane upon Ca(2+) binding.
<b>Tissue Specificity</b>	Ubiquitous.
<b>Function</b>	Catalytic activity:Broad endopeptidase specificity.,cofactor:Binds 3 calcium ions.,enzyme regulation:Activated by 200-1000 micromolar concentrations of calcium and inhibited by calpastatin.,Function:Calcium-regulated non-lysosomal thiol-protease which catalyze limited proteolysis of substrates involved in cytoskeletal remodeling and signal transduction.,sequence Caution:Contaminating sequence. Potential poly-A sequence.,similarity:Belongs to the peptidase C2 family.,similarity:Contains 1 calpain catalytic domain.,similarity:Contains 3 EF-hand domains.,subcellular location:Translocates to the plasma membrane upon Ca(2+) binding.,subunit:Forms a heterodimer with a small (regulatory) subunit (CAPNS1).,tissue specificity:Ubiquitous.,





## Background

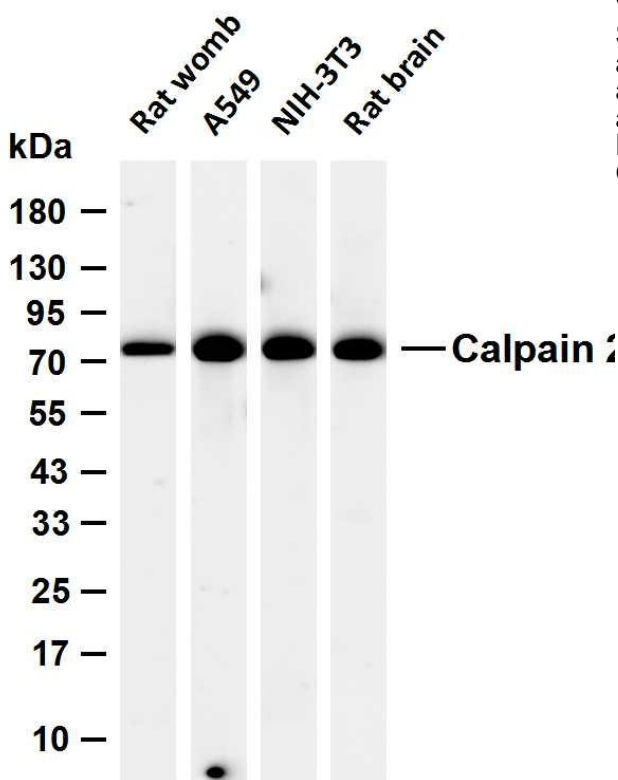
The calpains, calcium-activated neutral proteases, are nonlysosomal, intracellular cysteine proteases. The mammalian calpains include ubiquitous, stomach-specific, and muscle-specific proteins. The ubiquitous enzymes consist of heterodimers with distinct large, catalytic subunits associated with a common small, regulatory subunit. This gene encodes the large subunit of the ubiquitous enzyme, calpain 2. Multiple heterogeneous transcriptional start sites in the 5' UTR have been reported. Two transcript variants encoding different isoforms have been found for this gene. [provided by RefSeq, Mar 2009],

## matters needing attention

Avoid repeated freezing and thawing!

## Usage suggestions

This product can be used in immunological reaction related experiments. For more information, please consult technical personnel.



Various whole cell lysates were separated by 4-20% SDS-PAGE, and the membrane was blotted with anti-Calpain 2 antibody. The HRP-conjugated Goat anti-Rabbit IgG (H + L) antibody was used to detect the antibody. Lane 1: Rat womb Lane 2: A549 Lane 3: NIH-3T3 Lane 4: Rat brain Predicted band size: 80kDa Observed band size: 75kDa

