



CDC42 Rabbit mAb

Catalog No	YP-rAb-16958
Isotype	IgG
Reactivity	Human,Mouse,Rat
Applications	WB,IHC,IF,IP,ELISA
Gene Name	CDC42
Protein Name	Cell division control protein 42 homolog (G25K GTP-binding protein)
Purification Process	Protein A
Specificity	Endogenous
Formulation	PBS, 50% glycerol, 0.05% Proclin 300, 0.05%BSA
Source	Monoclonal, Rabbit,IgG
Dilution	IHC 1:200-1:1000; WB 1:1000-1:20000; IF 1:200-1:1000; ELISA 1:5000-1:20000; IP 1:50-1:200; Note: For IHC, we suggest antigen retrieval with TE buffer pH 9.0
Concentration	0.5 mg/ml
Purity	≥90%
Storage Stability	-15° C to -25° C/1 year(Do not lower than -25° C)
Synonyms	
Observed Band	21kD
Calculated Molecular Weight	21kD
Cell Pathway	Cell membrane ; Lipid-anchor ; Cytoplasmic side . Cytoplasm, cytoskeleton, microtubule organizing center, centrosome . Cytoplasm, cytoskeleton, spindle . Midbody . Cell projection, dendrite . Localizes to spindle during prometaphase cells. Moves to the central spindle as cells progressed through anaphase to telophase (PubMed:15642749). Localizes at the end of cytokinesis in the intercellular bridge formed between two daughter cells (PubMed:15642749). Its localization is regulated by the activities of guanine nucleotide exchange factor ECT2 and GTPase activating protein RACGAP1 (PubMed:15642749). Colocalizes with NEK6 in the centrosome (PubMed:20873783). In its active GTP-bound form localizes to the leading edge membrane of migrating dendritic cells (By similarity). .
Tissue Specificity	Brain,Cajal-Retzius cell,Cervix,Embryo,Fetal brain,Fetal brain cortex,Placenta,Uter
Function	enzyme regulation:Regulated by guanine nucleotide exchange factors (GEFs) which promote the exchange of bound GDP for free GTP, GTPase activating proteins (GAPs) which increase the GTP hydrolysis activity, and GDP dissociation inhibitors which inhibit the dissociation of the nucleotide from the

杭州臻优品生物科技有限公司

热销产品:

蛋白、一抗、抗体对、ELISA试剂盒、生化试剂盒
CCK8试剂盒、QPCR检测试剂盒

检测服务:

ELISA检测及定制服务 | 生化检测 | PCR、QPCR检测 | WB检测
ICO-IP检测 | 切片 | 染色 | 免疫组化 | 免疫荧光 | 透射电镜全套
| 宏基因组、转录组、基因组、蛋白组、代谢组测序



关注官网



关注客服



GTPase.Function:Plasma membrane-associated small GTPase which cycles between an active GTP-bound and an inactive GDP-bound state. In active state binds to a variety of effector proteins to regulate cellular responses. Involved in epithelial cell polarization processes. Causes the formation of thin, actin-rich surface projections called filopodia.,similarity:Belongs to the small GTPase superfamily. Rho family.,similarity:Belongs to the small GTPase superfamily. Rho family. CDC42 subfamily.,subunit:The GTP-bound form interacts with CCGP1 (By similarity). Interacts with CDC42EP1, CDC42EP2, CDC42EP3, CDC42EP4, CDC42EP5, CDC42SE1, CDC42SE2, PARD6A, PARD6B and PARD6G (in a GTP-dependent manner). Interacts with activated CSPG4 and with BAIAP2. Interacts with Zizimin1/DOCK9 and Zizimin2/DOCK11, which activate it by exchanging GDP for GTP. Interacts with NET1 and TCGAP/SNX26. Part of a complex with PARD3, PARD6A or PARD6B and PRKCI or PRK CZ.,

Background

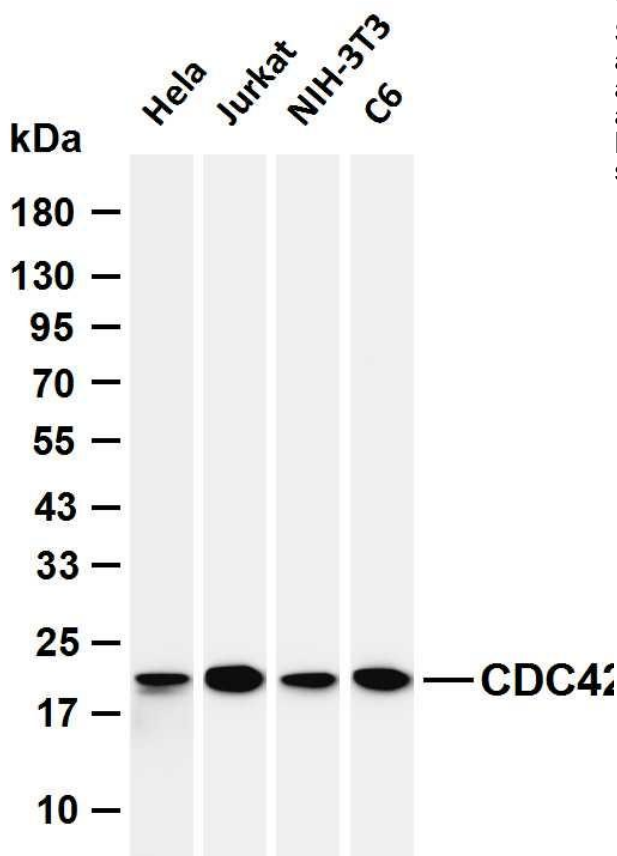
The protein encoded by this gene is a small GTPase of the Rho-subfamily, which regulates signaling pathways that control diverse cellular functions including cell morphology, migration, endocytosis and cell cycle progression. This protein is highly similar to *Saccharomyces cerevisiae* Cdc 42, and is able to complement the yeast *cdc42-1* mutant. The product of oncogene *Dbl* was reported to specifically catalyze the dissociation of GDP from this protein. This protein could regulate actin polymerization through its direct binding to Neural Wiskott-Aldrich syndrome protein (N-WASP), which subsequently activates Arp2/3 complex. Alternative splicing of this gene results in multiple transcript variants. Pseudogenes of this gene have been identified on chromosomes 3, 4, 5, 7, 8 and 20. [provided by RefSeq, Apr 2013],

matters needing attention

Avoid repeated freezing and thawing!

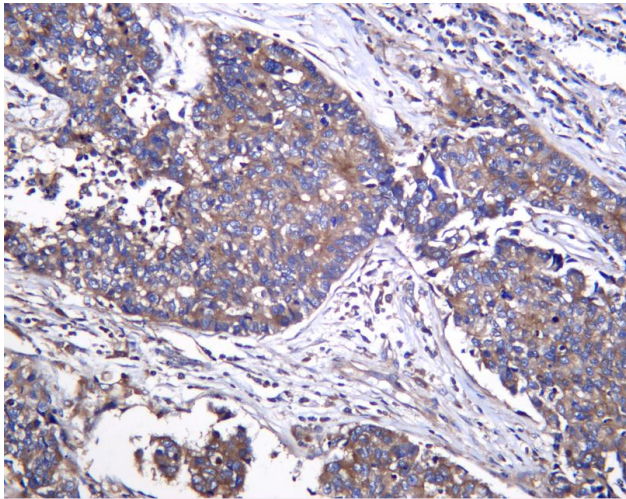
Usage suggestions

This product can be used in immunological reaction related experiments. For more information, please consult technical personnel.



Various whole cell lysates were separated by 4-20% SDS-PAGE, and the membrane was blotted with anti-CDC42 antibody. The HRP-conjugated Goat anti-Rabbit IgG (H + L) antibody was used to detect the antibody. Lane 1: HeLa Lane 2: Jurkat Lane 3: NIH-3T3 Lane 4: C6 Predicted band size: 21kDa Observed band size: 21kDa





Human lung carcinoma was stained with anti-CDC42 Rabbit antibody

杭州臻优品生物科技有限公司

热销产品:

蛋白、一抗、抗体对、ELISA试剂盒、生化试剂盒
CCK8试剂盒、QPCR检测试剂盒

检测服务:

ELISA检测及定制服务 | 生化检测 | PCR、QPCR检测 | WB检测
ICO-IP检测 | 切片 | 染色 | 免疫组化 | 免疫荧光 | 透射电镜全套
| 宏基因组、转录组、基因组、蛋白组、代谢组测序



关注官网



关注客服