



TFE3 Rabbit mAb

Catalog No	YP-rAb-16956
Isotype	IgG
Reactivity	Human,Mouse,Rat
Applications	WB,IHC,IF,ELISA
Gene Name	TFE3 BHLHE33
Protein Name	Transcription factor E3
Purification Process	Protein A
Specificity	Endogenous
Formulation	PBS, 50% glycerol, 0.05% Proclin 300, 0.05%BSA
Source	Monoclonal, Rabbit,IgG
Dilution	IHC 1:100-1:500; WB 1:1000-1:20000; IF 1:200-1:1000; ELISA 1:5000-1:20000; Note: For IHC, we suggest antigen retrieval with TE buffer pH 9.0
Concentration	0.5 mg/ml
Purity	≥90%
Storage Stability	-15° C to -25° C/1 year(Do not lower than -25° C)
Synonyms	TFE3 ; BHLHE33 ; Transcription factor E3 ; Class E basic helix-loop-helix protein 33 ; bHLHe33
Observed Band	72-89kD
Calculated Molecular Weight	62kD
Cell Pathway	Cytoplasm, cytosol . Nucleus . When nutrients are present, phosphorylation by MTOR prevents nuclear translocation and activity (PubMed:22692423, PubMed:30733432). Conversely, inhibition of mTORC1, starvation and lysosomal disruption, promotes dephosphorylation and translocation to the nucleus (PubMed:22692423, PubMed:30733432). .
Tissue Specificity	Ubiquitous in fetal and adult tissues.
Function	Disease:Chromosomal aberrations involving TFE3 are recurrent in alveolar soft part sarcoma (ASPS) [MIM:606243]. Translocation t(X;17)(p11;q25) with ASPSCR1 forms a ASPSCR1-TFE3 fusion protein.,Disease:Chromosomal aberrations involving TFE3 are recurrent in alveolar soft part sarcoma (ASPS). Translocation t(X;17)(p11;q25) with ASPSCR1 forms a ASPSCR1-TFE3 fusion protein.,Disease:Chromosomal aberrations involving TFE3 may be a cause of papillary renal cell carcinoma (PRCC) [MIM:605074]. Translocation t(X;1)(p11.2;q21.2) with PRCC; translocation t(X;1)(p11.2;p34) with PSF; inversion inv(X)(p11.2;q12) that fuses NONO to TFE3.,Function:Positive-acting

杭州臻优品生物科技有限公司

热销产品:

蛋白、一抗、抗体对、ELISA试剂盒、生化试剂盒
CCK8试剂盒、QPCR检测试剂盒

检测服务:

ELISA检测及定制服务 | 生化检测 | PCR、QPCR检测 | WB检测
ICO-IP检测 | 切片 | 染色 | 免疫组化 | 免疫荧光 | 透射电镜全套
| 宏基因组、转录组、基因组、蛋白组、代谢组测序



关注官网



关注客服



transcription factor that binds to the immunoglobulin enhancer MUE3 motif. It also binds very well to a USF/MLTF site. Binding of TFE3 to DNA induces DNA binding.,similarity:Belongs to the Mit/TFE family.,similarity:Contains 1 basic helix-loop-helix (bHLH) domain.,subunit:Efficient DNA binding requires dimerization with another bHLH protein.,tissue specificity:Ubiquitous in fetal and adult tissues.,

Background

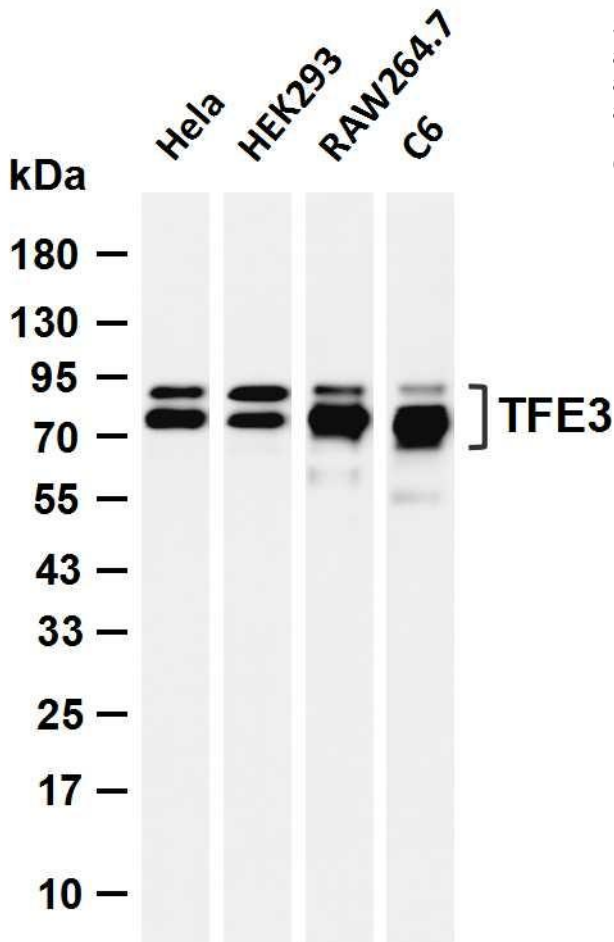
This gene encodes a basic helix-loop-helix domain-containing transcription factor that binds MUE3-type E-box sequences in the promoter of genes. The encoded protein promotes the expression of genes downstream of transforming growth factor beta (TGF-beta) signaling. This gene may be involved in chromosomal translocations in renal cell carcinomas and other cancers, resulting in the production of fusion proteins. Translocation partners include PRCC (papillary renal cell carcinoma), NONO (non-POU domain containing, octamer-binding), and ASPSCR1 (alveolar soft part sarcoma chromosome region, candidate 1), among other genes. Alternative splicing results in multiple transcript variants. [provided by RefSeq, Aug 2013],

matters needing attention

Avoid repeated freezing and thawing!

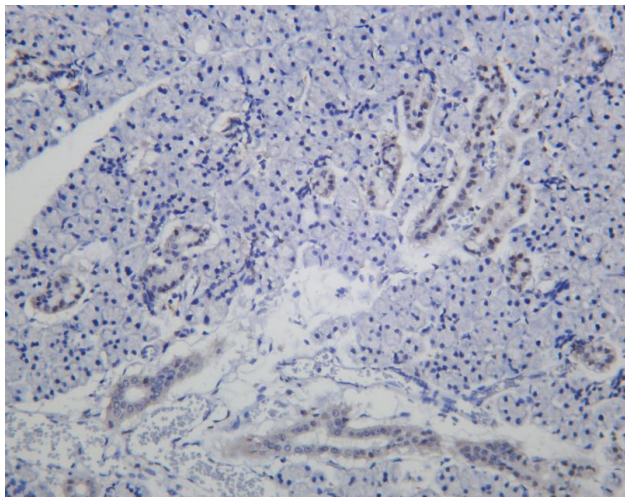
Usage suggestions

This product can be used in immunological reaction related experiments. For more information, please consult technical personnel.



Various whole cell lysates were separated by 4-20% SDS-PAGE, and the membrane was blotted with anti-TFE3 antibody. The HRP-conjugated Goat anti-Rabbit IgG (H + L) antibody was used to detect the antibody. Lane 1: HeLa Lane 2: HEK293 Lane 3: RAW264.7 Lane 4: C6 Predicted band size: 62kDa Observed band size: 72-89kDa





Rat thyroid was stained with anti-TFE3 Rabbit antibody

杭州臻优品生物科技有限公司

热销产品:

蛋白、一抗、抗体对、ELISA试剂盒、生化试剂盒
CCK8试剂盒、QPCR检测试剂盒

检测服务:

ELISA检测及定制服务 | 生化检测 | PCR、QPCR检测 | WB检测
ICO-IP检测 | 切片 | 染色 | 免疫组化 | 免疫荧光 | 透射电镜全套
| 宏基因组、转录组、基因组、蛋白组、代谢组测序



关注官网



关注客服