



CCR2 Rabbit mAb

Catalog No	YP-rAb-16955
Isotype	IgG
Reactivity	Mouse
Applications	WB,IF,ELISA
Gene Name	CCR2
Protein Name	C-C chemokine receptor type 2
Purification Process	Protein A
Specificity	Endogenous
Formulation	PBS, 50% glycerol, 0.05% Proclin 300, 0.05%BSA
Source	Monoclonal, Rabbit,IgG
Dilution	WB 1:1000-1:20000; IF 1:200-1:1000; ELISA 1:5000-1:20000;
Concentration	0.5 mg/ml
Purity	≥90%
Storage Stability	-15° C to -25° C/1 year(Do not lower than -25° C)
Synonyms	CCR2 ; CMKBR2 ; C-C chemokine receptor type 2 ; C-C CKR-2 ; CC-CKR-2 ; CCR-2 ; CCR2 ; Monocyte chemoattractant protein 1 receptor ; MCP-1-R ; CD192
Observed Band	43kD
Calculated Molecular Weight	42kD
Cell Pathway	Cell membrane ; Multi-pass membrane protein . The chemoattractant receptors are distributed throughout the cell surface; after stimulation with a ligand, such as CCL2, they are rapidly recruited into microdomain clusters at the cell membrane. .
Tissue Specificity	Expressed by monocytes and IL2-activated NK cells.
Function	Receptor for the MCP-1, MCP-3 and MCP-4 chemokines. Transduces a signal by increasing the intracellular calcium ions level. Alternative coreceptor with CD4 for HIV-1 infection.,online information:CC chemokine receptors entry,polymorphism:Variations in CCR2 are associated with relative resistance to immunodeficiency virus type 1 (resistance to HIV-1) [MIM:609423].,PTM:N-glycosylated.,similarity:Belongs to the G-protein coupled receptor 1 family.,subunit:Binds to HIV-1 Tat.,
Background	This gene encodes two isoforms of a receptor for monocyte chemoattractant protein-1, a chemokine which specifically mediates monocyte chemotaxis. Monocyte chemoattractant protein-1 is involved in monocyte infiltration in inflammatory diseases such as rheumatoid arthritis as well as in the inflammatory

杭州臻优品生物科技有限公司

热销产品:

蛋白、一抗、抗体对、ELISA试剂盒、生化试剂盒
CCK8试剂盒、QPCR检测试剂盒

检测服务:

ELISA检测及定制服务 | 生化检测 | PCR、QPCR检测 | WB检测
ICO-IP检测 | 切片 | 染色 | 免疫组化 | 免疫荧光 | 透射电镜全套
| 宏基因组、转录组、基因组、蛋白组、代谢组测序



关注官网



关注客服



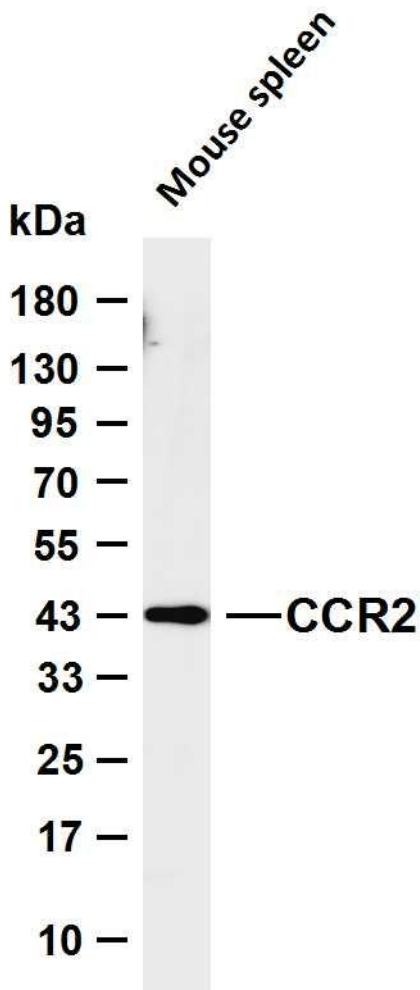
response against tumors. The receptors encoded by this gene mediate agonist-dependent calcium mobilization and inhibition of adenylyl cyclase. This gene is located in the chemokine receptor gene cluster region. Two alternatively spliced transcript variants are expressed by the gene. [provided by RefSeq, Mar 2009],

matters needing attention

Avoid repeated freezing and thawing!

Usage suggestions

This product can be used in immunological reaction related experiments. For more information, please consult technical personnel.



Various whole cell lysates were separated by 4-20% SDS-PAGE, and the membrane was blotted with anti-CCR2 antibody. The HRP-conjugated Goat anti-Rabbit IgG (H + L) antibody was used to detect the antibody. Lane 1: Mouse spleen Predicted band size: 42kDa Observed band size: 43kDa

