



# MARVELD2 Rabbit mAb

<b>Catalog No</b>	YP-rAb-16953
<b>Isotype</b>	IgG
<b>Reactivity</b>	Human
<b>Applications</b>	WB,IF,IP,ELISA
<b>Gene Name</b>	MARVELD2 TRIC
<b>Protein Name</b>	MARVEL domain-containing protein 2 (Tricellulin)
<b>Purification Process</b>	Protein A
<b>Specificity</b>	Endogenous
<b>Formulation</b>	PBS, 50% glycerol, 0.05% Proclin 300, 0.05%BSA
<b>Source</b>	Monoclonal, Rabbit,IgG
<b>Dilution</b>	WB 1:1000-1:20000; IF 1:200-1:1000; ELISA 1:5000-1:20000; IP 1:50-1:200;
<b>Concentration</b>	0.5 mg/ml
<b>Purity</b>	≥90%
<b>Storage Stability</b>	-15° C to -25° C/1 year(Do not lower than -25° C)
<b>Synonyms</b>	
<b>Observed Band</b>	64kD
<b>Calculated Molecular Weight</b>	64kD
<b>Cell Pathway</b>	Cell membrane ; Multi-pass membrane protein . Cell junction, tight junction . Located at tricellular contacts. .
<b>Tissue Specificity</b>	Brain,Epithelium,Lung,Trachea,
<b>Function</b>	Disease:Defects in MARVELD2 are the cause of non-syndromic sensorineural deafness autosomal recessive type 49 (DFNB49) [MIM:610153]. DFNB49 is a form of sensorineural hearing loss. Sensorineural deafness results from damage to the neural receptors of the inner ear, the nerve pathways to the brain, or the area of the brain that receives sound information.,Function:Plays a role in the formation of the epithelial barriers. The separation of the endolymphatic and perilymphatic spaces of the organ of Corti from one another by epithelial barriers is required for normal hearing.,PTM:Phosphorylated upon DNA damage, probably by ATM or ATR.,similarity:Contains 1 MARVEL domain.,subcellular location:Found at tricellular contacts.,
<b>Background</b>	The protein encoded by this gene is a membrane protein found at the tight junctions between epithelial cells. The encoded protein helps establish epithelial





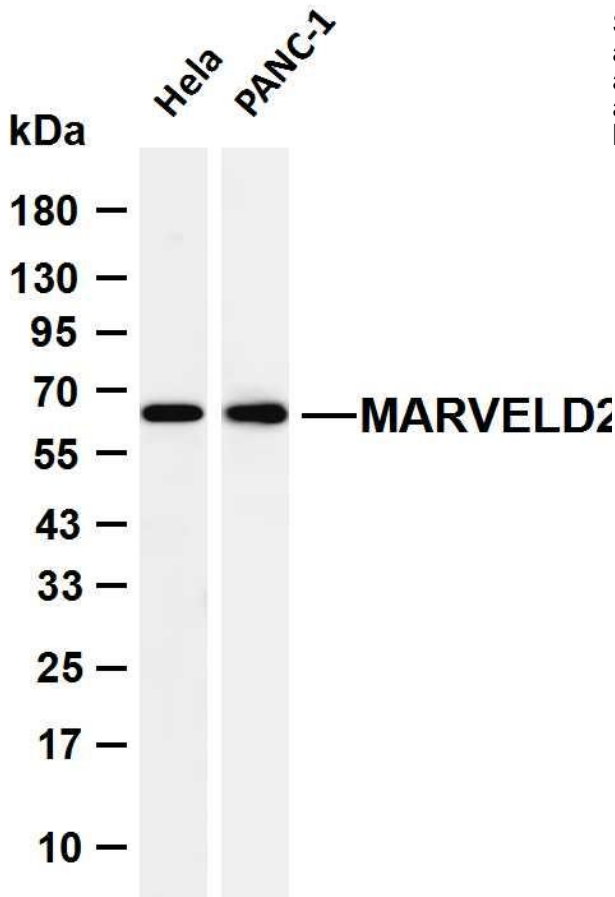
barriers such as those in the organ of Corti, where these barriers are required for normal hearing. Defects in this gene are a cause of deafness autosomal recessive type 49 (DFNB49). Two transcript variants encoding different isoforms have been found for this gene. [provided by RefSeq, Sep 2011],

**matters needing attention**

Avoid repeated freezing and thawing!

**Usage suggestions**

This product can be used in immunological reaction related experiments. For more information, please consult technical personnel.



Various whole cell lysates were separated by 4-20% SDS-PAGE, and the membrane was blotted with anti-MARVELD2 antibody. The HRP-conjugated Goat anti-Rabbit IgG (H + L) antibody was used to detect the antibody. Lane 1: HeLa Lane 2: PANC-1 Predicted band size: 64kDa Observed band size: 64kDa

杭州臻优品生物科技有限公司

热销产品:

蛋白、一抗、抗体对、ELISA试剂盒、生化试剂盒  
CCK8试剂盒、QPCR检测试剂盒

检测服务:

ELISA检测及定制服务 | 生化检测 | PCR、QPCR检测 | WB检测  
ICO-IP检测 | 切片 | 染色 | 免疫组化 | 免疫荧光 | 透射电镜全套  
| 宏基因组、转录组、基因组、蛋白组、代谢组测序



关注官网



关注客服