



# DC-LAMP Rabbit mAb

<b>Catalog No</b>	YP-rAb-16950
<b>Isotype</b>	IgG
<b>Reactivity</b>	Human
<b>Applications</b>	IHC,IF,ELISA
<b>Gene Name</b>	LAMP3 DCLAMP TSC403
<b>Protein Name</b>	Lysosome-associated membrane glycoprotein 3 (LAMP-3) (Lysosomal-associated membrane protein 3) (DC-lysosome-associated membrane glycoprotein) (DC LAMP) (Protein TSC403) (CD antigen CD208)
<b>Purification Process</b>	Protein A
<b>Specificity</b>	Endogenous
<b>Formulation</b>	PBS, 50% glycerol, 0.05% Proclin 300, 0.05%BSA
<b>Source</b>	Monoclonal, Rabbit,IgG
<b>Dilution</b>	IHC 1:200-1:500; IF 1:200-1:1000; ELISA 1:5000-1:20000; Note: For IHC, we suggest antigen retrieval with TE buffer pH 9.0
<b>Concentration</b>	0.5 mg/ml
<b>Purity</b>	≥90%
<b>Storage Stability</b>	-15° C to -25° C/1 year(Do not lower than -25° C)
<b>Synonyms</b>	Lysosome-associated membrane glycoprotein 3 ; LAMP-3 ; Lysosomal-associated membrane protein 3 ; DC-lysosome-associated membrane glycoprotein ; DC LAMP ; Protein TSC403 ; CD antigen CD208 ;
<b>Observed Band</b>	
<b>Calculated Molecular Weight</b>	
<b>Cell Pathway</b>	Cell surface . Lysosome membrane ; Single-pass type I membrane protein . Cytoplasmic vesicle membrane ; Single-pass type I membrane protein . Early endosome membrane ; Single-pass type I membrane protein . During dendritic cell maturation, detected on cytoplasmic vesicles (the MHC II compartment) that contain MHC II proteins, LAMP1, LAMP2 and LAMP3 (PubMed:9768752). Detected on lysosomes in mature dendritic cells (PubMed:9768752). .
<b>Tissue Specificity</b>	Detected in tonsil interdigitating dendritic cells, in spleen, lymph node, Peyer's patches in the small intestine, in thymus medulla and in B-cells (at protein level). Expressed in lymphoid organs and dendritic cells. Expressed in lung. Up-regulated in carcinomas of the esophagus, colon, rectum, ureter, stomach, breast, fallopian tube, thyroid and parotid tissues.
<b>Function</b>	Might change the lysosome function after the transfer of peptide-MHC class II molecules to the surface of dendritic cells.,similarity:Belongs to the LAMP





family.,tissue specificity:Expressed in lymphoid organs and dendritic cells. Expressed in lung. Up-regulated in carcinomas of the esophagus, colon, rectum, ureter, stomach, breast, fallopian tube, thyroid and parotid tissues.,

**Background**

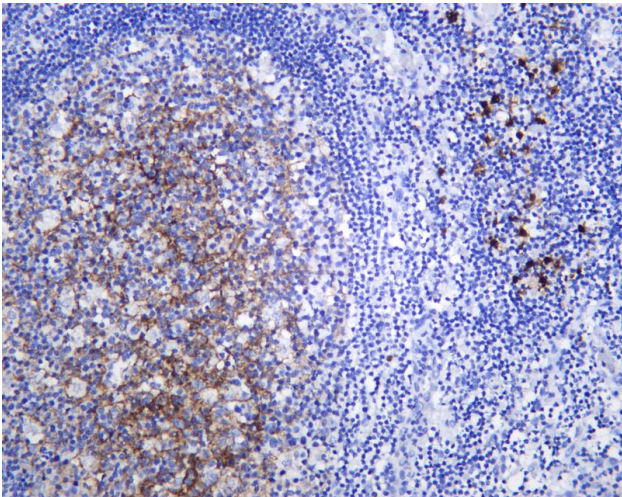
Dendritic cells (DCs) are the most potent antigen-presenting cells. Immature DCs efficiently capture antigens and differentiate into interdigitating dendritic cells (IDCs) in lymphoid tissues that induce primary T-cell responses (summary by de Saint-Vis et al., 1998 [PubMed 9768752]).[supplied by OMIM, Dec 2010],

**matters needing attention**

Avoid repeated freezing and thawing!

**Usage suggestions**

This product can be used in immunological reaction related experiments. For more information, please consult technical personnel.



Human tonsil was stained with anti-DC-LAMP Rabbit antibody

