



# TRAP Rabbit mAb

<b>Catalog No</b>	YP-rAb-16939
<b>Isotype</b>	IgG
<b>Reactivity</b>	Human,Mouse,Rat
<b>Applications</b>	WB,IHC,IF,IP,ELISA
<b>Gene Name</b>	ACP5
<b>Protein Name</b>	Type 5 acid phosphatase;Acid phosphatase 5 tartrate resistant;Acid phosphatase 5, tartrate resistant;ACP5;EC 3.1.3.2;MGC117378;PPA5_HUMAN;serum band 5 tartrate-resistant acid phosphatase;SPENCDI;T5ap;Tartrate resistant acid ATPase;Tartrate resistant acid phosphatase type 5;Tartrate resistant acid phosphatase type 5 precursor;Tartrate-resistant acid ATPase;Tartrate-resistant acid phosphatase type 5;TR AP;TR-AP;TRACP 5;TRAP;TrATPase;Type 5 acid phosphatase
<b>Purification Process</b>	Protein A
<b>Specificity</b>	Endogenous
<b>Formulation</b>	PBS, 50% glycerol, 0.05% Proclin 300, 0.05%BSA
<b>Source</b>	Monoclonal, Rabbit,IgG
<b>Dilution</b>	IHC 1:200-1:1000; WB 1:1000-1:20000; IF 1:200-1:1000; ELISA 1:5000-1:20000; IP 1:50-1:200; Note: For IHC, we suggest antigen retrieval with TE buffer pH 9.0
<b>Concentration</b>	0.5 mg/ml
<b>Purity</b>	≥90%
<b>Storage Stability</b>	-15° C to -25° C/1 year(Do not lower than -25° C)
<b>Synonyms</b>	Type 5 acid phosphatase ; Acid phosphatase 5 tartrate resistant ; Acid phosphatase 5, tartrate resistant ; ACP5 ; MGC117378 ; PPA5_HUMAN ; serum band 5 tartrate-resistant acid phosphatase ; SPENCDI ; T5ap ; Tartrate resistant acid ATPase ; Tartrate resistant acid phosphatase type 5 ; Tartrate resistant acid phosphatase type 5 precursor ; Tartrate-resistant acid ATPase ; Tartrate-resistant acid phosphatase type 5 ; TR AP ; TR-AP ; TRACP 5 ; TRAP ; TrATPase ; Type 5 acid phosphatase
<b>Observed Band</b>	43kD
<b>Calculated Molecular Weight</b>	37kD
<b>Cell Pathway</b>	Cytoplasmic
<b>Tissue Specificity</b>	Lung





### Function

Catalytic activity: A phosphate monoester + H<sub>2</sub>O = an alcohol + phosphate., cofactor: Binds 2 iron ions per subunit., Disease: This relatively minor intracellular isozyme of acid phosphatase can become the dominant isozyme in certain pathological states (Gaucher and Hodgkin diseases, the hairy cell, the B-cell, and the T-cell leukemias)., similarity: Belongs to the metallophosphoesterase superfamily. Purple acid phosphatase family., subunit: Exists either as monomer or, after proteolytic processing, as a dimer of two chains linked by disulfide bond(s).

### Background

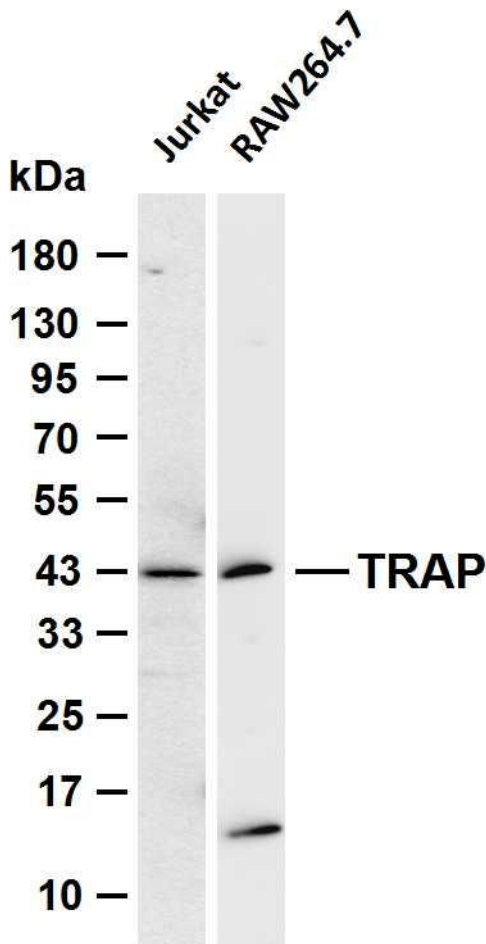
This gene encodes an iron containing glycoprotein which catalyzes the conversion of orthophosphoric monoester to alcohol and orthophosphate. It is the most basic of the acid phosphatases and is the only form not inhibited by L(+)-tartrate. [provided by RefSeq, Aug 2008],

### matters needing attention

Avoid repeated freezing and thawing!

### Usage suggestions

This product can be used in immunological reaction related experiments. For more information, please consult technical personnel.



Various whole cell lysates were separated by 4-20% SDS-PAGE, and the membrane was blotted with anti-TRAP antibody. The HRP-conjugated Goat anti-Rabbit IgG (H + L) antibody was used to detect the antibody. Lane 1: Jurkat Lane 2: RAW264.7  
Predicted band size: 37kDa Observed band size: 43kDa

