



MCT 1 Rabbit mAb

Catalog No	YP-rAb-16934
Isotype	IgG
Reactivity	Human,Mouse,Rat
Applications	WB,IHC,IF,ELISA
Gene Name	SLC16A1 MCT1
Protein Name	Monocarboxylate transporter 1 (MCT 1) (Solute carrier family 16 member 1)
Purification Process	Protein A
Specificity	Endogenous
Formulation	PBS, 50% glycerol, 0.05% Proclin 300, 0.05%BSA
Source	Monoclonal, Rabbit,IgG
Dilution	IHC 1:200-1:1000; WB 1:2000-1:10000; IF 1:200-1:1000; ELISA 1:5000-1:20000; Note: For IHC, we suggest antigen retrieval with TE buffer pH 9.0
Concentration	0.5 mg/ml
Purity	≥90%
Storage Stability	-15° C to -25° C/1 year(Do not lower than -25° C)
Synonyms	
Observed Band	54kD
Calculated Molecular Weight	54kD
Cell Pathway	Cell membrane ; Multi-pass membrane protein .
Tissue Specificity	Detected in heart and in blood lymphocytes and monocytes (at protein level). Widely expressed.
Function	Disease:Defects in SLC16A1 are the cause of familial hyperinsulinemic hypoglycemia type 7 (HHF7) [MIM:610021]; also known as exercise-induced hyperinsulinemic hypoglycemia. HHF7 is a dominantly inherited hypoglycemic disorder characterized by inappropriate insulin secretion during anaerobic exercise or on pyruvate load.,Disease:Defects in SLC16A1 are the cause of symptomatic deficiency in lactate transport (SDLT) [MIM:245340]; also known as erythrocyte lactate transporter defect. Deficiency of lactate transporter may result in an acidic intracellular environment created by muscle activity with consequent degeneration of muscle and release of myoglobin and creatine kinase. This defect might compromise extreme performance in otherwise healthy individuals.,Function:Proton-linked monocarboxylate transporter. Catalyzes the rapid transport across the plasma membrane of many monocarboxylates such as lactate, pyruvate, branched-chain oxo acids derived from leucine, valine and





isoleucine, and the ketone bodies acetoacetate, beta-hydroxybutyrate and acetate.,similarity:Belongs to the major facilitator superfamily. Monocarboxylate porter (TC 2.A.1.13) family.,tissue specificity:Widely expressed in normal and in cancer cells.,

Background

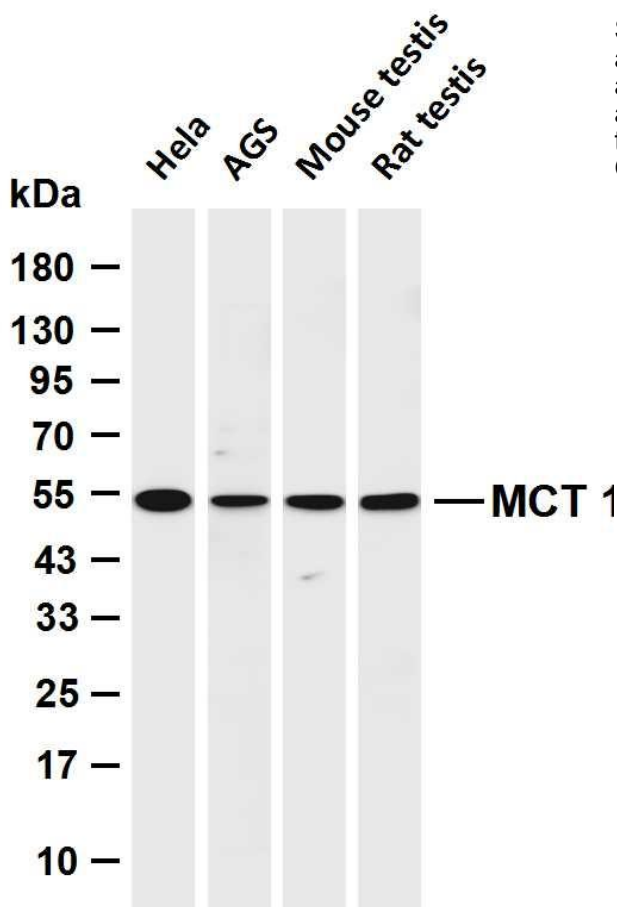
The protein encoded by this gene is a proton-linked monocarboxylate transporter that catalyzes the movement of many monocarboxylates, such as lactate and pyruvate, across the plasma membrane. Mutations in this gene are associated with erythrocyte lactate transporter defect. Alternatively spliced transcript variants have been found for this gene.[provided by RefSeq, Oct 2009],

matters needing attention

Avoid repeated freezing and thawing!

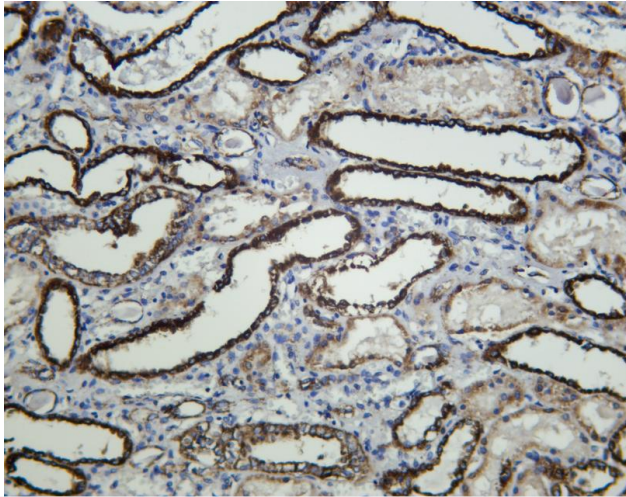
Usage suggestions

This product can be used in immunological reaction related experiments. For more information, please consult technical personnel.



Various whole cell lysates were separated by 4-20% SDS-PAGE, and the membrane was blotted with anti-MCT 1 antibody. The HRP-conjugated Goat anti-Rabbit IgG (H + L) antibody was used to detect the antibody. Lane 1: HeLa Lane 2: AGS Lane 3: Mouse testis Lane 4: Rat testis Predicted band size: 54kDa Observed band size: 54kDa





Human kidney was stained with anti-MCT 1 Rabbit antibody

杭州臻优品生物科技有限公司

热销产品:

蛋白、一抗、抗体对、ELISA试剂盒、生化试剂盒
CCK8试剂盒、QPCR检测试剂盒

检测服务:

ELISA检测及定制服务 | 生化检测 | PCR、QPCR检测 | WB检测
ICO-IP检测 | 切片 | 染色 | 免疫组化 | 免疫荧光 | 透射电镜全套
| 宏基因组、转录组、基因组、蛋白组、代谢组测序



关注官网



关注客服