



WTAP Rabbit mAb

Catalog No	YP-rAb-16933
Isotype	IgG
Reactivity	Human
Applications	WB,IHC,IF,IP,ELISA
Gene Name	WTAP
Protein Name	Pre-mRNA-splicing regulator WTAP
Purification Process	Protein A
Specificity	Endogenous
Formulation	PBS, 50% glycerol, 0.05% Proclin 300, 0.05%BSA
Source	Monoclonal, Rabbit,IgG
Dilution	IHC 1:200-1:1000; WB 1:2000-1:10000; IF 1:200-1:1000; ELISA 1:5000-1:20000; IP 1:50-1:200; Note: For IHC, we suggest antigen retrieval with TE buffer pH 9.0
Concentration	0.5 mg/ml
Purity	≥90%
Storage Stability	-15° C to -25° C/1 year(Do not lower than -25° C)
Synonyms	WTAP ; KIAA0105 ; Pre-mRNA-splicing regulator WTAP ; Female-lethal ; 2 ; D homolog ; hFL ; 2 ; D ; WT1-associated protein ; Wilms tumor 1-associating protein
Observed Band	55kD
Calculated Molecular Weight	44kD
Cell Pathway	Nucleus speckle . Nucleus, nucleoplasm . Cytoplasm . Mainly nuclear with some fraction located in the cytoplasm. ZC3H13 is required to anchor component of the MACOM subcomplex, such as VIRMA, in the nucleus. .
Tissue Specificity	Ubiquitously expressed.
Function	Regulates G2/M cell-cycle transition by binding to the 3' UTR of CCNA2, which enhances its stability. Impairs WT1 DNA-binding ability and inhibits expression of WT1 target genes. May be involved in mRNA splicing regulation.,induction:In smooth muscle cells, up-regulated after serum withdrawal, when cells become mature and non proliferative.,PTM:Phosphorylated upon DNA damage, probably by ATM or ATR.,similarity:Belongs to the fl(2)d family.,subunit:Interacts with WT1.,tissue specificity:Ubiquitously expressed.,
Background	The Wilms tumor suppressor gene WT1 appears to play a role in both transcriptional and posttranscriptional regulation of certain cellular genes. This





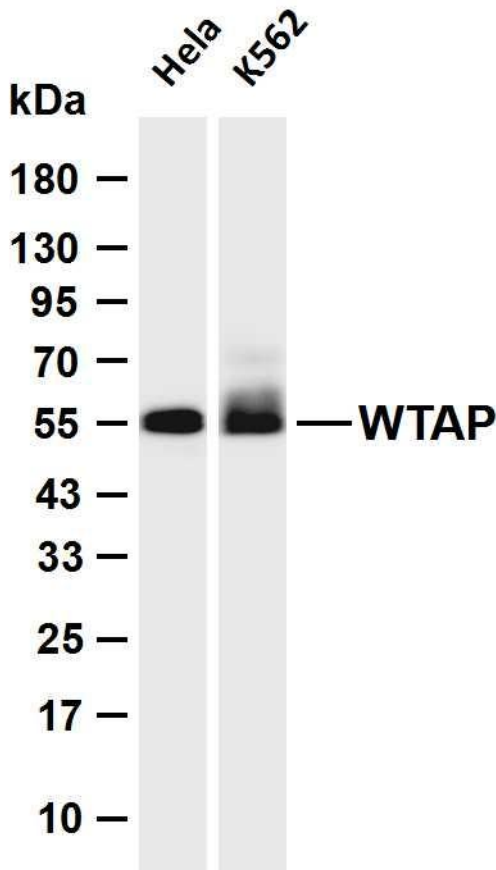
gene encodes a WT1-associated protein, which is a ubiquitously expressed nuclear protein. Like WT1 protein, this protein is localized throughout the nucleoplasm as well as in speckles and partially colocalizes with splicing factors. Alternative splicing of this gene results in several transcript variants encoding three different isoforms. [provided by RefSeq, Jul 2012],

matters needing attention

Avoid repeated freezing and thawing!

Usage suggestions

This product can be used in immunological reaction related experiments. For more information, please consult technical personnel.



Various whole cell lysates were separated by 4-20% SDS-PAGE, and the membrane was blotted with anti-WTAP antibody. The HRP-conjugated Goat anti-Rabbit IgG (H + L) antibody was used to detect the antibody. Lane 1: HeLa Lane 2: K562 Predicted band size: 44kDa Observed band size: 55kDa

