



# Inhibin $\alpha$ Rabbit mAb

|                                    |   |
|------------------------------------|---|
| <b>Catalog No</b>                  | YP-rAb-16932  |
| <b>Isotype</b>                     | IgG   |
| <b>Reactivity</b>                  | Human,Mouse,Rat   |
| <b>Applications</b>                | WB,IF,ELISA   |
| <b>Gene Name</b>                   | INHA  |
| <b>Protein Name</b>                | Inhibin alpha chain   |
| <b>Purification Process</b>        | Protein A   |
| <b>Specificity</b>                 | Endogenous  |
| <b>Formulation</b>                 | PBS, 50% glycerol, 0.05% Proclin 300, 0.05%BSA  |
| <b>Source</b>                      | Monoclonal, Rabbit,IgG  |
| <b>Dilution</b>                    | WB 1:2000-1:10000; IF 1:200-1:1000; ELISA 1:5000-1:20000;   |
| <b>Concentration</b>               | 0.5 mg/ml   |
| <b>Purity</b>                      | $\geq 90\%$   |
| <b>Storage Stability</b>           | -15° C to -25° C/1 year(Do not lower than -25° C)   |
| <b>Synonyms</b>                    | Inhibin alpha chain   |
| <b>Observed Band</b>               | 50kD  |
| <b>Calculated Molecular Weight</b> | 40kD  |
| <b>Cell Pathway</b>                | Secreted.   |
| <b>Tissue Specificity</b>          | Originally found in ovary (granulosa cells) and testis (Sertoli cells), but widely distributed in many tissues including brain and placenta. In adrenal cortex expression is limited to the zona reticularis and the innermost zona fasciculata in the normal gland, extending centripetally into the zona fasciculata in hyperplasia. Also found in adrenocortical tumors. Also expressed in prostate epithelium of benign prostatic hyperplasia, in regions of basal cell hyperplasia and in nonmalignant regions of high grade prostate cancer. Only circulating inhibin B is found in male, whereas circulating inhibins A and B are found in female. |
| <b>Function</b>                    | Inhibins and activins inhibit and activate, respectively, the secretion of follitropin by the pituitary gland. Inhibins/activins are involved in regulating a number of diverse functions such as hypothalamic and pituitary hormone secretion, gonadal hormone secretion, germ cell development and maturation, erythroid differentiation, insulin secretion, nerve cell survival, embryonic axial development or bone growth, depending on their subunit composition. Inhibins appear to oppose the functions of activins.,online information:Inhibin entry,PTM:Proteolytic   |

杭州臻优品生物科技有限公司

热销产品:

蛋白、一抗、抗体对、ELISA试剂盒、生化试剂盒  
CCK8试剂盒、QPCR检测试剂盒

检测服务:

ELISA检测及定制服务 | 生化检测 | PCR、QPCR检测 | WB检测  
ICO-IP检测 | 切片 | 染色 | 免疫组化 | 免疫荧光 | 透射电镜全套  
| 宏基因组、转录组、基因组、蛋白组、代谢组测序



关注官网



关注客服



processing yields a number of bioactive forms. The 20/23 kDa forms consist solely of the mature alpha chain, the 26/29 kDa forms consist of the most N-terminal propeptide linked through a disulfide bond to the mature alpha chain, the 50/53 kDa forms encompass the entire proprotein. Each type can be furthermore either mono- or diglycosylated, causing the mass difference. similarity: Belongs to the TGF-beta family. subunit: Dimeric, linked by one or more disulfide bonds. Inhibin A is a dimer of alpha and beta-A. Inhibin B is a dimer of alpha and beta-B. tissue specificity: Originally found in ovary (granulosa cells) and testis (Sertoli cells), but widely distributed in many tissues including brain and placenta. In adrenal cortex expression is limited to the zona reticularis and the innermost zona fasciculata in the normal gland, extending centripetally into the zona fasciculata in hyperplasia. Also found in adrenocortical tumors. Also expressed in prostate epithelium of benign prostatic hyperplasia, in regions of basal cell hyperplasia and in nonmalignant regions of high grade prostate cancer. Only circulating inhibin B is found in male, whereas circulating inhibins A and B are found in female.

### Background

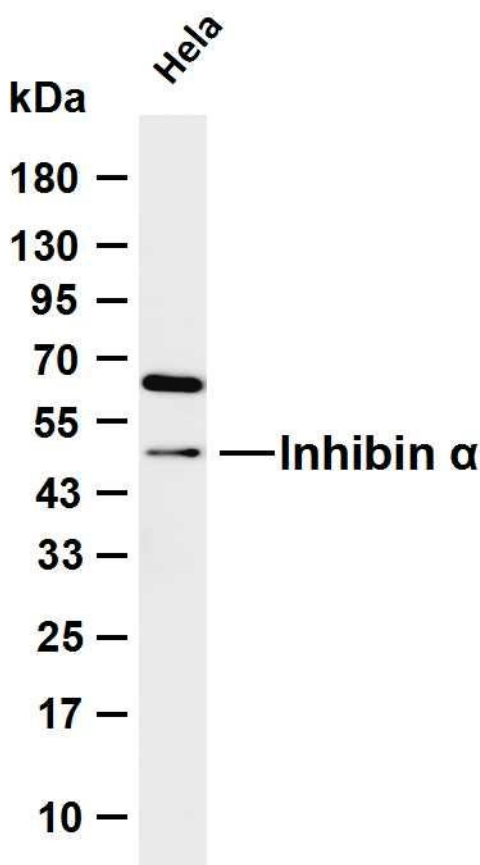
This gene encodes a member of the TGF-beta (transforming growth factor-beta) superfamily of proteins. The encoded preproprotein is proteolytically processed to generate multiple peptide products, including the alpha subunit of the inhibin A and B protein complexes. These complexes negatively regulate follicle stimulating hormone secretion from the pituitary gland. Inhibins have also been implicated in regulating numerous cellular processes including cell proliferation, apoptosis, immune response and hormone secretion. Mutations in this gene may be associated with male infertility and premature ovarian failure in female human patients. [provided by RefSeq, Aug 2016],

### matters needing attention

Avoid repeated freezing and thawing!

### Usage suggestions

This product can be used in immunological reaction related experiments. For more information, please consult technical personnel.



Various whole cell lysates were separated by 4-20% SDS-PAGE, and the membrane was blotted with anti-Inhibin  $\alpha$  antibody. The HRP-conjugated Goat anti-Rabbit IgG (H + L) antibody was used to detect the antibody. Lane 1: HeLa Predicted band size: 40kDa Observed band size: 50kDa

