



Calmodulin 1/2/3 Rabbit mAb

Catalog No	YP-rAb-16931
Isotype	IgG
Reactivity	Human,Mouse,Rat
Applications	WB,IHC,IF,IP,ELISA
Gene Name	CALM1
Protein Name	Calmodulin
Purification Process	Protein A
Specificity	Endogenous
Formulation	PBS, 50% glycerol, 0.05% Proclin 300, 0.05%BSA
Source	Monoclonal, Rabbit,IgG
Dilution	IHC 1:2000-1:10000; WB 1:2000-1:10000; IF 1:200-1:1000; ELISA 1:5000-1:20000; IP 1:50-1:200; Note: For IHC, we suggest antigen retrieval with TE buffer pH 9.0
Concentration	0.5 mg/ml
Purity	≥90%
Storage Stability	-15° C to -25° C/1 year(Do not lower than -25° C)
Synonyms	CALM1 ; CALM ; CAM ; CAM1 ; CALM2 ; CAM2 ; CAMB ; CALM3 ; CALML2 ; CAM3 ; CAMC ; CAMIII ; Calmodulin ; CaM
Observed Band	18kD
Calculated Molecular Weight	17kD
Cell Pathway	spindle pole,extracellular region,nucleus,nucleoplasm,cytoplasm,centrosome,cytosol,spindle microtubule,plasma membrane,voltage-gated potassium channel complex,sarcomere,growth cone,vesicle,calcium channel complex,G
Tissue Specificity	Blood,Brain,Cajal-Retzius cell,Fetal brain cortex,Lung,Lymph,Lymphoma,Muscle,Osteosarcoma,P
Function	Calmodulin mediates the control of a large number of enzymes and other proteins by Ca(2+). Among the enzymes to be stimulated by the calmodulin-Ca(2+) complex are a number of protein kinases and phosphatases. Together with CEP110 and centrin, is involved in a genetic pathway that regulates the centrosome cycle and progression through cytokinesis.,miscellaneous:This protein has four functional calcium-binding sites.,PTM:Phosphorylation results in a decreased activity.,PTM:Ubiquitination results in a strongly decreased activity.,similarity:Belongs to the calmodulin family.,similarity:Contains 4 EF-hand domains.,subcellular location:Distributed throughout the cell during interphase,





but during mitosis becomes dramatically localized to the spindle poles and the spindle microtubules.,subunit:Interacts with MYO1C (By similarity). Interacts with CEP97, CEP110, TTN/titin and SRY.,

Background

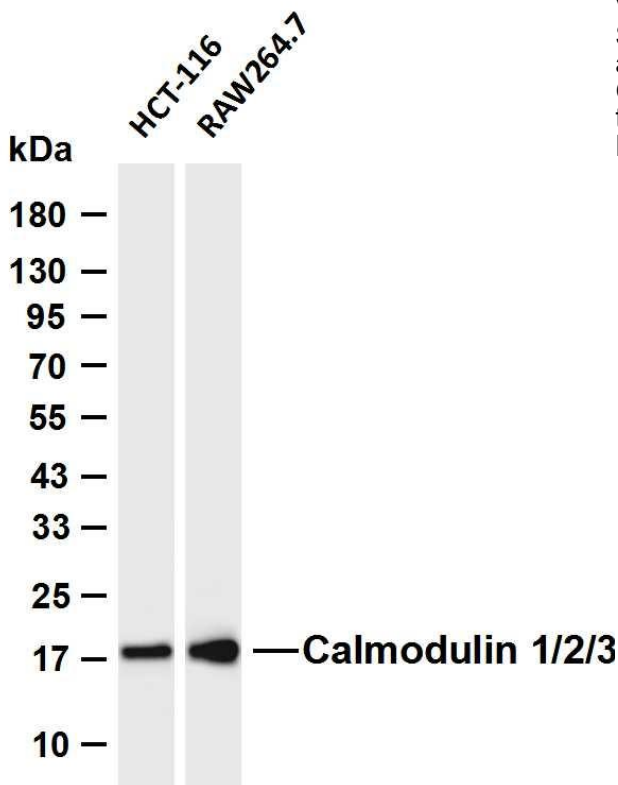
This gene encodes a member of the EF-hand calcium-binding protein family. It is one of three genes which encode an identical calcium binding protein which is one of the four subunits of phosphorylase kinase. Two pseudogenes have been identified on chromosome 7 and X. Multiple transcript variants encoding different isoforms have been found for this gene.[provided by RefSeq, Oct 2009],

matters needing attention

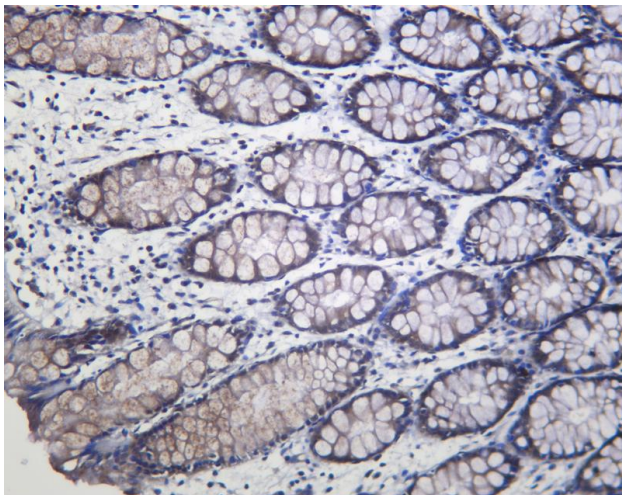
Avoid repeated freezing and thawing!

Usage suggestions

This product can be used in immunological reaction related experiments. For more information, please consult technical personnel.



Various whole cell lysates were separated by 4-20% SDS-PAGE, and the membrane was blotted with anti-Calmodulin 1/2/3 antibody. The HRP-conjugated Goat anti-Rabbit IgG (H + L) antibody was used to detect the antibody. Lane 1: HCT-116 Lane 2: RAW264.7 Predicted band size: 17kDa Observed band size: 18kDa



Human colon was stained with anti-Calmodulin 1/2/3 Rabbit antibody

杭州臻优品生物科技有限公司

热销产品:

蛋白、一抗、抗体对、ELISA试剂盒、生化试剂盒
CCK8试剂盒、QPCR检测试剂盒

检测服务:

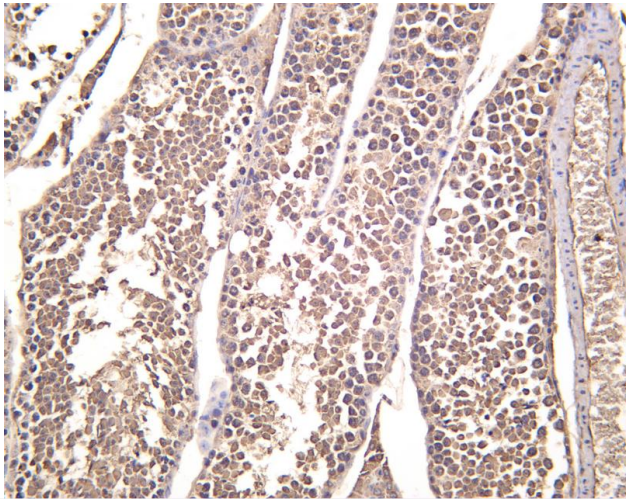
ELISA检测及定制服务 | 生化检测 | PCR、QPCR检测 | WB检测
ICO-IP检测 | 切片 | 染色 | 免疫组化 | 免疫荧光 | 透射电镜全套
| 宏基因组、转录组、基因组、蛋白组、代谢组测序



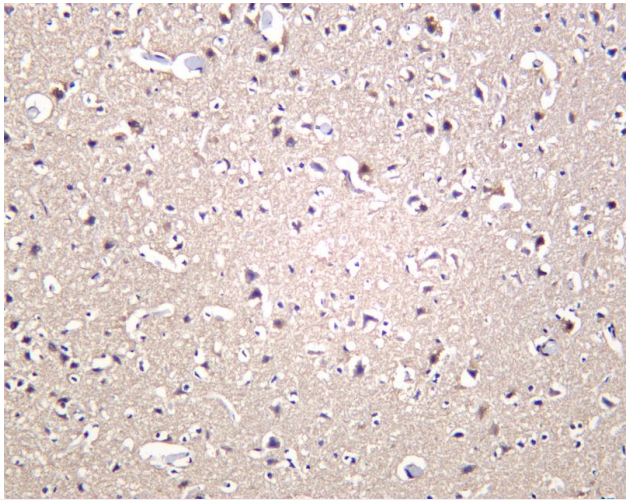
关注官网



关注客服



Mouse testis was stained with anti-Calmodulin 1/2/3 Rabbit antibody



Rat brain was stained with anti-Calmodulin 1/2/3 Rabbit antibody

杭州臻优品生物科技有限公司

热销产品:

蛋白、一抗、抗体对、ELISA试剂盒、生化试剂盒
CCK8试剂盒、QPCR检测试剂盒

检测服务:

ELISA检测及定制服务 | 生化检测 | PCR、QPCR检测 | WB检测
ICO-IP检测 | 切片 | 染色 | 免疫组化 | 免疫荧光 | 透射电镜全套
| 宏基因组、转录组、基因组、蛋白组、代谢组测序



关注官网



关注客服