



# ROR $\gamma$ Rabbit mAb

<b>Catalog No</b>	YP-rAb-16930
<b>Isotype</b>	IgG
<b>Reactivity</b>	Mouse
<b>Applications</b>	WB,IHC,IF,IP,ELISA
<b>Gene Name</b>	RORC
<b>Protein Name</b>	Nuclear receptor ROR-gamma
<b>Purification Process</b>	Protein A
<b>Specificity</b>	Endogenous
<b>Formulation</b>	PBS, 50% glycerol, 0.05% Proclin 300, 0.05%BSA
<b>Source</b>	Monoclonal, Rabbit,IgG
<b>Dilution</b>	IHC 1:200-1:1000; WB 1:2000-1:10000; IF 1:200-1:1000; ELISA 1:5000-1:20000; IP 1:50-1:200; Note: For IHC, we suggest antigen retrieval with TE buffer pH 9.0
<b>Concentration</b>	0.5 mg/ml
<b>Purity</b>	≥90%
<b>Storage Stability</b>	-15° C to -25° C/1 year(Do not lower than -25° C)
<b>Synonyms</b>	RORC ; NR1F3 ; RORG ; RZRG ; Nuclear receptor ROR-gamma ; Nuclear receptor RZR-gamma ; Nuclear receptor subfamily 1 group F member 3 ; Retinoid-related orphan receptor-gamma
<b>Observed Band</b>	58kD
<b>Calculated Molecular Weight</b>	58kD
<b>Cell Pathway</b>	Nucleus .
<b>Tissue Specificity</b>	Isoform 1 is widely expressed in many tissues, including liver and adipose, and highly expressed in skeletal muscle. Isoform 2 is primarily expressed in immature thymocytes.
<b>Function</b>	Orphan nuclear receptor.,similarity:Belongs to the nuclear hormone receptor family.,similarity:Belongs to the nuclear hormone receptor family. NR1 subfamily.,similarity:Contains 1 nuclear receptor DNA-binding domain.,tissue specificity:Highly expressed in skeletal muscle.,
<b>Background</b>	The protein encoded by this gene is a DNA-binding transcription factor and is a member of the NR1 subfamily of nuclear hormone receptors. The specific functions of this protein are not known; however, studies of a similar gene in mice have shown that this gene may be essential for lymphoid organogenesis and may play an important regulatory role in thymopoiesis. In addition, studies in mice





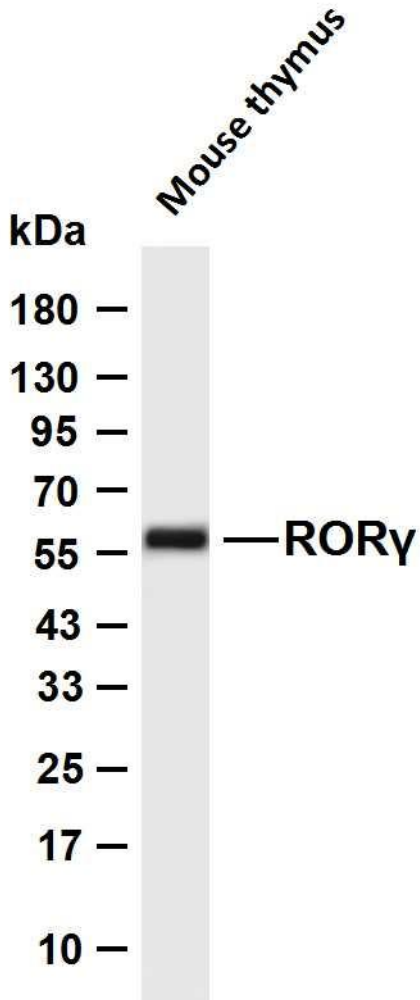
suggest that the protein encoded by this gene may inhibit the expression of Fas ligand and IL2. Two transcript variants encoding different isoforms have been found for this gene. [provided by RefSeq, Jul 2008],

**matters needing attention**

Avoid repeated freezing and thawing!

**Usage suggestions**

This product can be used in immunological reaction related experiments. For more information, please consult technical personnel.



Various whole cell lysates were separated by 4-20% SDS-PAGE, and the membrane was blotted with anti-ROR $\gamma$  antibody. The HRP-conjugated Goat anti-Rabbit IgG (H + L) antibody was used to detect the antibody. Lane 1: Mouse thymus Predicted band size: 58kDa Observed band size: 58kDa

