



NEK7 Rabbit mAb

Catalog No	YP-rAb-16929
Isotype	IgG
Reactivity	Human,Mouse,Rat
Applications	WB,IF,IP,ELISA
Gene Name	NEK7
Protein Name	Serine/threonine-protein kinase Nek7
Purification Process	Protein A
Specificity	Endogenous
Formulation	PBS, 50% glycerol, 0.05% Proclin 300, 0.05%BSA
Source	Monoclonal, Rabbit,IgG
Dilution	WB 1:2000-1:10000; IF 1:200-1:1000; ELISA 1:5000-1:20000; IP 1:50-1:200;
Concentration	0.5 mg/ml
Purity	≥90%
Storage Stability	-15° C to -25° C/1 year(Do not lower than -25° C)
Synonyms	NEK7 ; Serine/threonine-protein kinase Nek7 ; Never in mitosis A-related kinase 7 ; NimA-related protein kinase 7
Observed Band	33kD
Calculated Molecular Weight	35kD
Cell Pathway	Nucleus . Cytoplasm . Cytoplasm, cytoskeleton, spindle pole . Cytoplasm, cytoskeleton, microtubule organizing center, centrosome . Present at centrosome throughout the cell cycle (PubMed:17586473). Also detected at spindle midzone of the anaphase cells and eventually concentrates at the midbody (PubMed:17586473). Interaction with ANKS3 prevents its translocation to the nucleus (By similarity). .
Tissue Specificity	Highly expressed in lung, muscle, testis, brain, heart, liver, leukocyte and spleen. Lower expression in ovary, prostate and kidney. No expression seen in small intestine.
Function	Catalytic activity:ATP + a protein = ADP + a phosphoprotein.,cofactor:Magnesium.,similarity:Belongs to the protein kinase superfamily.,similarity:Belongs to the protein kinase superfamily. NEK Ser/Thr protein kinase family. NIMA subfamily.,similarity:Contains 1 protein kinase domain.,tissue specificity:Highly expressed in lung, muscle, testis, brain, heart, liver, leukocyte and spleen. Lower expression in ovary, prostate and kidney. No expression seen in small intestine.,





Background

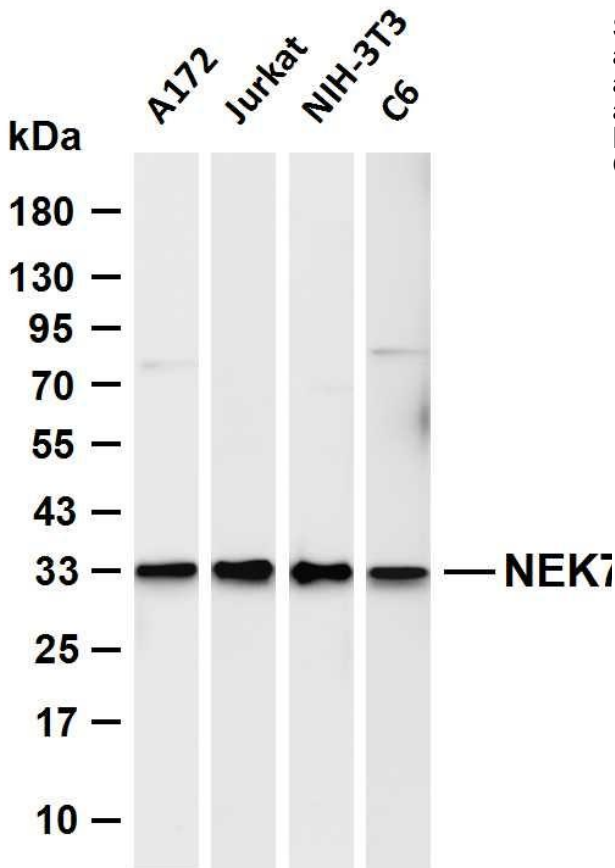
NIMA-related kinases share high amino acid sequence identity with the gene product of the *Aspergillus nidulans* 'never in mitosis A' gene, which controls initiation of mitosis.[supplied by OMIM, Jul 2002],

matters needing attention

Avoid repeated freezing and thawing!

Usage suggestions

This product can be used in immunological reaction related experiments. For more information, please consult technical personnel.



Various whole cell lysates were separated by 4-20% SDS-PAGE, and the membrane was blotted with anti-NEK7 antibody. The HRP-conjugated Goat anti-Rabbit IgG (H + L) antibody was used to detect the antibody. Lane 1: A172 Lane 2: Jurkat Lane 3: NIH-3T3 Lane 4: C6 Predicted band size: 35kDa Observed band size: 33kDa

