



Bcl-10 Rabbit mAb

Catalog No	YP-rAb-16922
Isotype	IgG
Reactivity	Human
Applications	WB,IHC,IF,IP,ELISA
Gene Name	BCL10
Protein Name	B-cell lymphoma/leukemia 10
Purification Process	Protein A
Specificity	Endogenous
Formulation	PBS, 50% glycerol, 0.05% Proclin 300, 0.05%BSA
Source	Monoclonal, Rabbit,IgG
Dilution	IHC 1:200-1:1000; WB 1:2000-1:10000; IF 1:200-1:1000; ELISA 1:5000-1:20000; IP 1:50-1:200; Note: For IHC, we suggest antigen retrieval with TE buffer pH 9.0
Concentration	0.5 mg/ml
Purity	≥90%
Storage Stability	-15° C to -25° C/1 year(Do not lower than -25° C)
Synonyms	BCL10 ; CIPER ; CLAP ; B-cell lymphoma/leukemia 10 ; B-cell CLL/lymphoma 10 ; Bcl-10 ; CARD-containing molecule enhancing NF-kappa-B ; CARD-like apoptotic protein ; hCLAP ; CED-3/ICH-1 prodomain homologous E10-like regulator ; CIPER ; Cellular homolog
Observed Band	32kD
Calculated Molecular Weight	26kD
Cell Pathway	Cytoplasm, perinuclear region . Membrane raft . Appears to have a perinuclear, compact and filamentous pattern of expression. Also found in the nucleus of several types of tumor cells. Colocalized with DPP4 in membrane rafts. .
Tissue Specificity	Ubiquitous.
Function	Disease:A chromosomal aberration involving BCL10 is recurrent in low-grade mucosa-associated lymphoid tissue (MALT lymphoma). Translocation t(1;14)(p22;q32). Although the BCL10/IgH translocation leaves the coding region of BCL10 intact, frequent BCL10 mutations could be attributed to the Ig somatic hypermutation mechanism resulting in nucleotide transitions.,Disease:Defects in BCL10 are involved in various types of cancer.,Function:Promotes apoptosis, pro-caspase-9 maturation and activation of NF-kappa-B via NIK and IKK. May be an adapter protein between upstream TNFR1-TRADD-RIP complex and the





downstream NIK-IKK-IKAP complex. Is a substrate for MALT1.,PTM:Phosphorylated. Phosphorylation results in dissociation from TRAF2 and binding to BIRC2/c-IAP2.,similarity:Contains 1 CARD domain.,subcellular location:Appears to have a perinuclear, compact and filamentous pattern of expression. Also found in the nucleus of several types of tumor cells.,subunit:Self-associates by CARD-CARD interaction and forms a tight complex with MALT1. Interacts with other CARD-proteins such as CARD9, CARD10, CARD11 and CARD14. Binds caspase-9 with its C-terminal domain. Interacts with TRAF2 and BIRC2/c-IAP2.,tissue specificity:Ubiquitous.,

Background

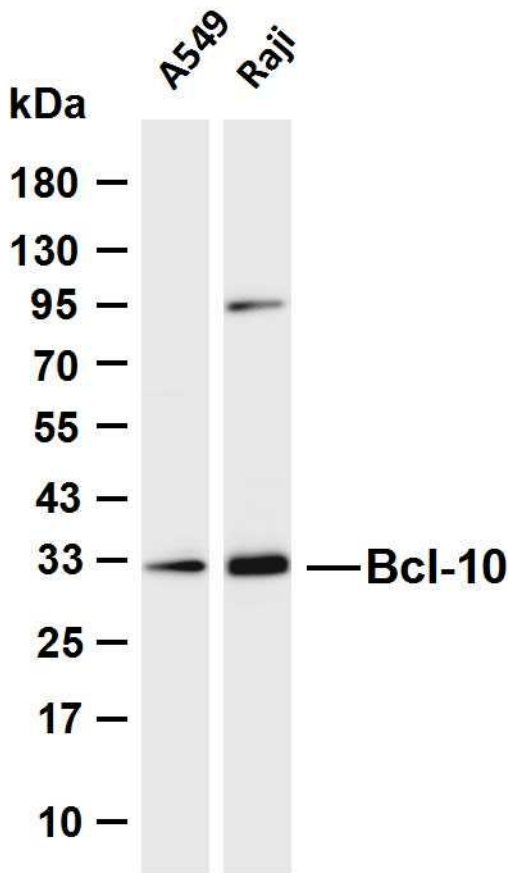
This gene was identified by its translocation in a case of mucosa-associated lymphoid tissue (MALT) lymphoma. The protein encoded by this gene contains a caspase recruitment domain (CARD), and has been shown to induce apoptosis and to activate NF-kappaB. This protein is reported to interact with other CARD domain containing proteins including CARD9, 10, 11 and 14, which are thought to function as upstream regulators in NF-kappaB signaling. This protein is found to form a complex with MALT1, a protein encoded by another gene known to be translocated in MALT lymphoma. MALT1 and this protein are thought to synergize in the activation of NF-kappaB, and the deregulation of either of them may contribute to the same pathogenetic process that leads to the malignancy. Alternative splicing results in multiple transcript variants. [provided by RefSeq, Mar 2016],

matters needing attention

Avoid repeated freezing and thawing!

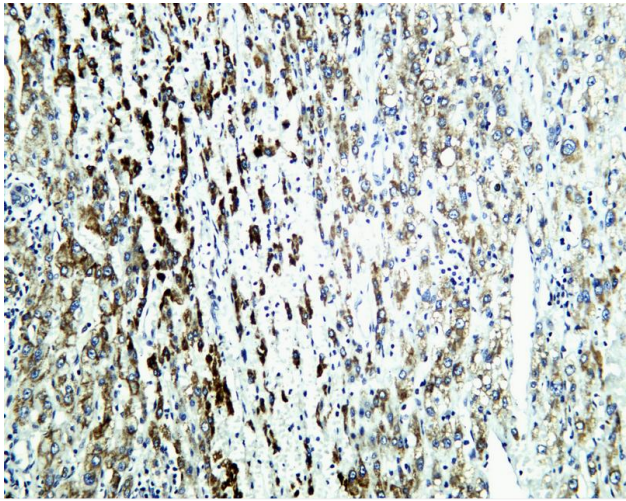
Usage suggestions

This product can be used in immunological reaction related experiments. For more information, please consult technical personnel.

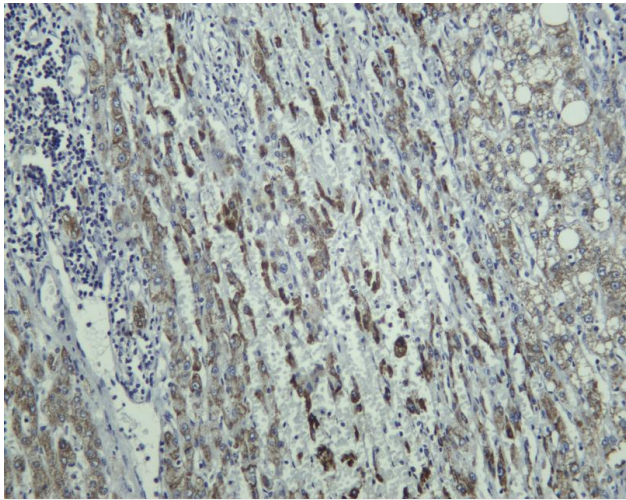


Various whole cell lysates were separated by 4-20% SDS-PAGE, and the membrane was blotted with anti-Bcl-10 antibody. The HRP-conjugated Goat anti-Rabbit IgG (H + L) antibody was used to detect the antibody. Lane 1: A549 Lane 2: Raji Predicted band size: 26kDa Observed band size: 32kDa





Human liver cancer was stained with anti-Bcl-10 Rabbit antibody



Human liver was stained with anti-Bcl-10 Rabbit antibody

杭州臻优品生物科技有限公司

热销产品:

蛋白、一抗、抗体对、ELISA试剂盒、生化试剂盒
CCK8试剂盒、QPCR检测试剂盒

检测服务:

ELISA检测及定制服务 | 生化检测 | PCR、QPCR检测 | WB检测
ICO-IP检测 | 切片 | 染色 | 免疫组化 | 免疫荧光 | 透射电镜全套
| 宏基因组、转录组、基因组、蛋白组、代谢组测序



关注官网



关注客服