



NCAM2 Rabbit mAb

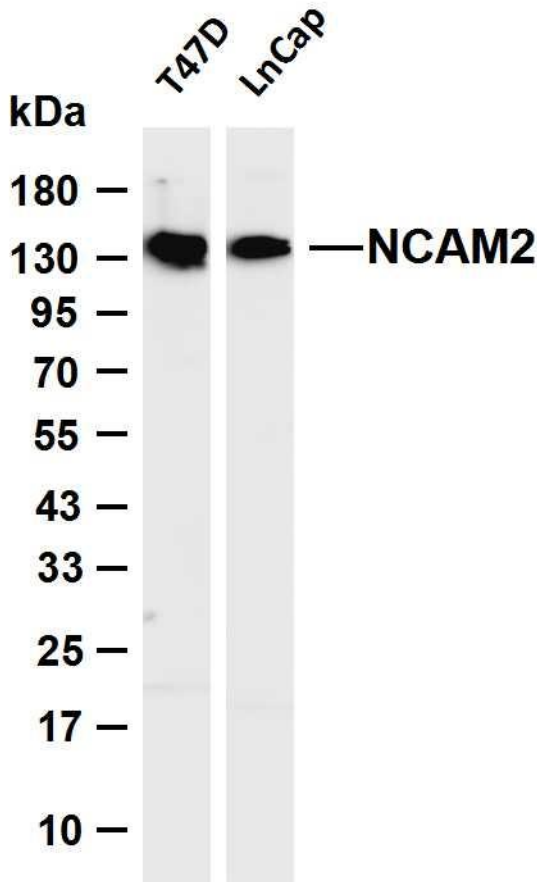
Catalog No	YP-rAb-16912
Isotype	IgG
Reactivity	Human
Applications	WB,IHC,IF,IP,ELISA
Gene Name	NCAM2
Protein Name	Neural cell adhesion molecule 2
Purification Process	Protein A
Specificity	Endogenous
Formulation	PBS, 50% glycerol, 0.05% Proclin 300, 0.05%BSA
Source	Monoclonal, Rabbit,IgG
Dilution	IHC 1:200-1:1000; WB 1:2000-1:10000; IF 1:200-1:1000; ELISA 1:5000-1:20000; IP 1:50-1:200; Note: For IHC, we suggest antigen retrieval with TE buffer pH 9.0
Concentration	0.5 mg/ml
Purity	≥90%
Storage Stability	-15° C to -25° C/1 year(Do not lower than -25° C)
Synonyms	NCAM2 ; NCAM21 ; Neural cell adhesion molecule 2 ; N-CAM-2 ; NCAM-2
Observed Band	140kD
Calculated Molecular Weight	93kD
Cell Pathway	Cell membrane; Single-pass type I membrane protein.
Tissue Specificity	Expressed most strongly in adult and fetal brain.
Function	May play important roles in selective fasciculation and zone-to-zone projection of the primary olfactory axons.,similarity:Contains 2 fibronectin type-III domains.,similarity:Contains 5 Ig-like C2-type (immunoglobulin-like) domains.,tissue specificity:Expressed most strongly in adult and fetal brain.,
Background	The protein encoded by this gene belongs to the immunoglobulin superfamily. It is a type I membrane protein and may function in selective fasciculation and zone-to-zone projection of the primary olfactory axons. [provided by RefSeq, Jul 2008],
matters needing attention	Avoid repeated freezing and thawing!





Usage suggestions

This product can be used in immunological reaction related experiments. For more information, please consult technical personnel.



Various whole cell lysates were separated by 4-20% SDS-PAGE, and the membrane was blotted with anti-NCAM2 antibody. The HRP-conjugated Goat anti-Rabbit IgG (H + L) antibody was used to detect the antibody. Lane 1: T47D Lane 2: LnCap Predicted band size: 93kDa Observed band size: 140kDa

杭州臻优品生物科技有限公司

热销产品:

蛋白、一抗、抗体对、ELISA试剂盒、生化试剂盒
CCK8试剂盒、QPCR检测试剂盒

检测服务:

ELISA检测及定制服务 | 生化检测 | PCR、QPCR检测 | WB检测
ICO-IP检测 | 切片 | 染色 | 免疫组化 | 免疫荧光 | 透射电镜全套
| 宏基因组、转录组、基因组、蛋白组、代谢组测序



关注官网



关注客服