



TERF2 Rabbit mAb

Catalog No	YP-rAb-16908
Isotype	IgG
Reactivity	Human
Applications	WB,IHC,IF,ELISA
Gene Name	TERF2 TRBF2 TRF2
Protein Name	Telomeric repeat-binding factor 2 (TTAGGG repeat-binding factor 2) (Telomeric DNA-binding protein)
Purification Process	Protein A
Specificity	Endogenous
Formulation	PBS, 50% glycerol, 0.05% Proclin 300, 0.05%BSA
Source	Monoclonal, Rabbit,IgG
Dilution	IHC 1:500-1:1000; WB 1:2000-1:10000; IF 1:200-1:1000; ELISA 1:5000-1:20000; Note: For IHC, we suggest antigen retrieval with TE buffer pH 9.0
Concentration	0.5 mg/ml
Purity	≥90%
Storage Stability	-15° C to -25° C/1 year(Do not lower than -25° C)
Synonyms	Telomeric repeat-binding factor 2 ; TTAGGG repeat-binding factor 2 ; Telomeric DNA-binding protein ;
Observed Band	65kD
Calculated Molecular Weight	60kD
Cell Pathway	Nucleus . Chromosome, telomere . Colocalizes with telomeric DNA in interphase cells and is located at chromosome ends during metaphase.
Tissue Specificity	Ubiquitous. Highly expressed in spleen, thymus, prostate, uterus, testis, small intestine, colon and peripheral blood leukocytes.
Function	Binds the telomeric double-stranded TTAGGG repeat. Protects against end-to-end fusion of chromosomes and plays a role in successful progression through the cell division cycle. Component of the shelterin complex (telosome) that is involved in the regulation of telomere length and protection. Shelterin associates with arrays of double-stranded TTAGGG repeats added by telomerase and protects chromosome ends; without its protective activity, telomeres are no longer hidden from the DNA damage surveillance and chromosome ends are inappropriately processed by DNA repair pathways.,PTM:Phosphorylated upon DNA damage, probably by ATM or ATR.,similarity:Contains 1 HTH myb-type DNA-binding domain.,subcellular location:Colocalizes with telomeric DNA in interphase cells and is located at chromosome ends during metaphase.,subunit:Homodimer. Component of the shelterin complex (telosome)

杭州臻优品生物科技有限公司

热销产品:

蛋白、一抗、抗体对、ELISA试剂盒、生化试剂盒
CCK8试剂盒、QPCR检测试剂盒

检测服务:

ELISA检测及定制服务 | 生化检测 | PCR、QPCR检测 | WB检测
ICO-IP检测 | 切片 | 染色 | 免疫组化 | 免疫荧光 | 透射电镜全套
| 宏基因组、转录组、基因组、蛋白组、代谢组测序



关注官网



关注客服



composed of TERF1, TERF2, TINF2, TERF2IP ACD and POT1. Binds to RAP1. Interacts with NBN.,tissue specificity:Ubiquitous. Highly expressed in spleen, thymus, prostate, uterus, testis, small intestine, colon and peripheral blood leukocytes.,

Background

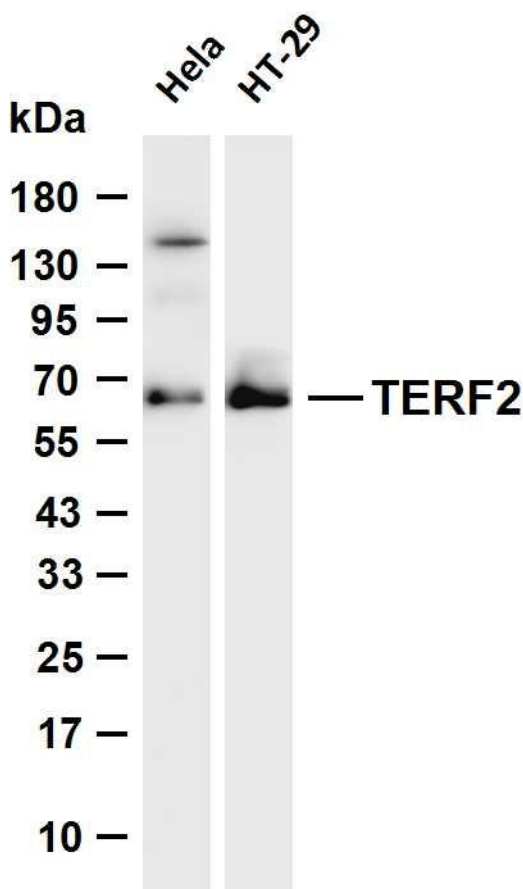
This gene encodes a telomere specific protein, TERF2, which is a component of the telomere nucleoprotein complex. This protein is present at telomeres in metaphase of the cell cycle, is a second negative regulator of telomere length and plays a key role in the protective activity of telomeres. While having similar telomere binding activity and domain organization, TERF2 differs from TERF1 in that its N terminus is basic rather than acidic. [provided by RefSeq, Jul 2008],

matters needing attention

Avoid repeated freezing and thawing!

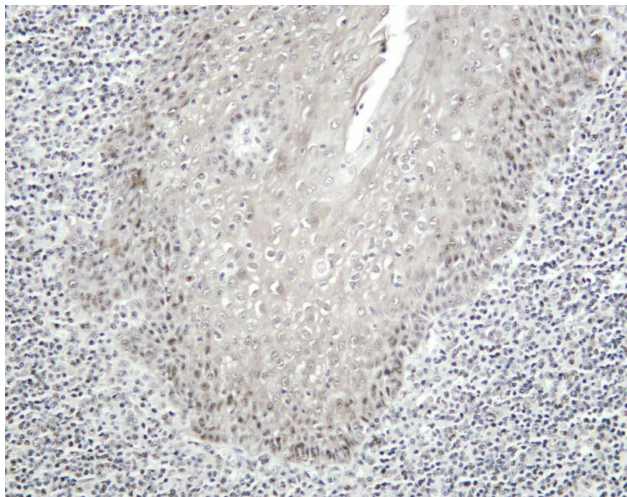
Usage suggestions

This product can be used in immunological reaction related experiments. For more information, please consult technical personnel.



Various whole cell lysates were separated by 4-20% SDS-PAGE, and the membrane was blotted with anti-TERF2 antibody. The HRP-conjugated Goat anti-Rabbit IgG (H + L) antibody was used to detect the antibody. Lane 1: HeLa Lane 2: HT-29 Predicted band size: 60kDa Observed band size: 65kDa





Human tonsil was stained with anti-TERF2 Rabbit antibody

