



# Wnt5b Rabbit mAb

<b>Catalog No</b>	YP-rAb-16900
<b>Isotype</b>	IgG
<b>Reactivity</b>	Human,Mouse,Rat
<b>Applications</b>	WB,IHC,IF,ELISA
<b>Gene Name</b>	wnt5b
<b>Protein Name</b>	
<b>Purification Process</b>	Protein A
<b>Specificity</b>	Endogenous
<b>Formulation</b>	PBS, 50% glycerol, 0.05% Proclin 300, 0.05%BSA
<b>Source</b>	Monoclonal, Rabbit,IgG
<b>Dilution</b>	IHC 1:200-1:1000; WB 1:500-1:2000; IF 1:200-1:1000; ELISA 1:5000-1:20000; Note: For IHC, we suggest antigen retrieval with TE buffer pH 9.0
<b>Concentration</b>	0.5 mg/ml
<b>Purity</b>	≥90%
<b>Storage Stability</b>	-15° C to -25° C/1 year(Do not lower than -25° C)
<b>Synonyms</b>	MGC2648 ; Protein Wnt-5b ; Wingless type MMTV integration site family, member 5B ; WNT 5B ; WNT 5B protein ; Wnt5b ; WNT5B protein ; WNT5B_HUMAN.
<b>Observed Band</b>	45kD
<b>Calculated Molecular Weight</b>	40kD
<b>Cell Pathway</b>	Secreted, extracellular space, extracellular matrix.
<b>Tissue Specificity</b>	Brain,Muscle,
<b>Function</b>	Ligand for members of the frizzled family of seven transmembrane receptors.,Ligand for members of the frizzled family of seven transmembrane receptors. Probable developmental protein. May be a signaling molecule which affects the development of discrete regions of tissues. Is likely to signal over only few cell diameters.,similarity:Belongs to the Wnt family.,subunit:Interacts with PORCN.,
<b>Background</b>	The WNT gene family consists of structurally related genes which encode secreted signaling proteins. These proteins have been implicated in oncogenesis and in several developmental processes, including regulation of cell fate and patterning during embryogenesis. This gene is a member of the WNT gene family. It encodes a protein which shows 94% and 80% amino acid identity to the mouse Wnt5b protein and the human WNT5A protein, respectively. Alternative splicing of





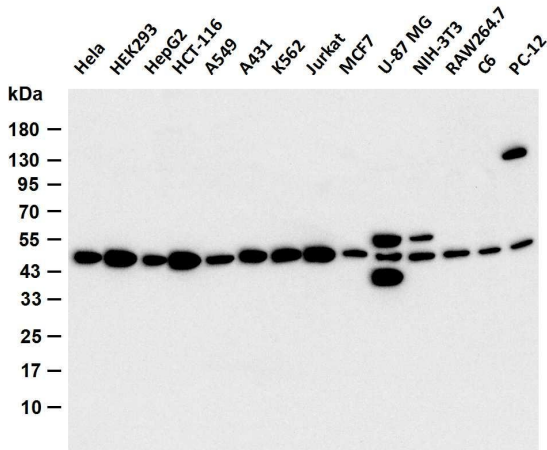
this gene generates 2 transcript variants. [provided by RefSeq, Jul 2008],

**matters needing attention**

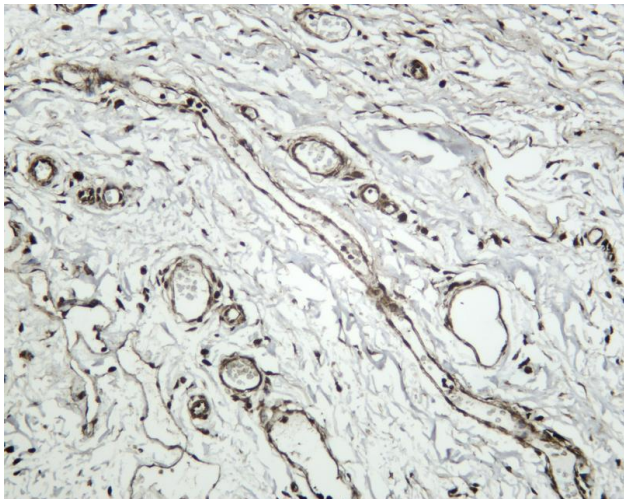
Avoid repeated freezing and thawing!

**Usage suggestions**

This product can be used in immunological reaction related experiments. For more information, please consult technical personnel.



Various whole cell lysates were separated by 4-20% SDS-PAGE, and the membrane was blotted with anti-Wnt5b antibody. The HRP-conjugated Goat anti-Rabbit IgG (H + L) antibody was used to detect the antibody. Lane 1: HeLa Lane 2: HEK293 Lane 3: HepG2 Lane 4: HCT-116 Lane 5: A549 Lane 6: A431 Lane 7: K562 Lane 8: Jurkat Lane 9: MCF7 Lane 10: U-87 MG Lane 11: NIH-3T3 Lane 12: RAW264.7 Lane 13: C6 Lane 14: PC-12 Predicted band size: 40kDa Observed band size: 45kDa



Human tonsil was stained with anti-Wnt5b Rabbit antibody

