



Mouse G-CSF Mouse mAb

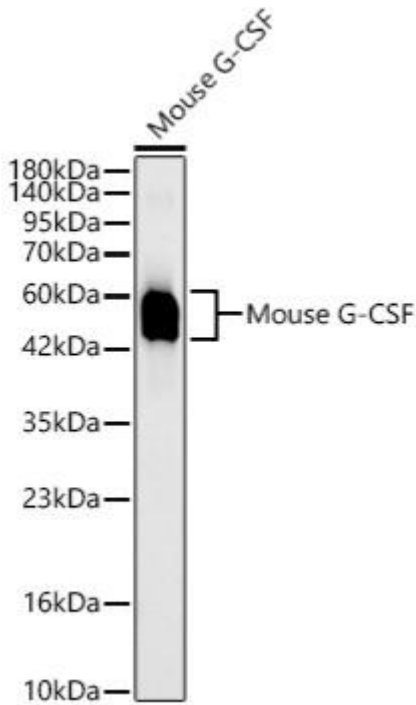
Catalog No	YP-mAb-19292
Isotype	IgG
Reactivity	Human,Mouse,Rat
Applications	WB
Gene Name	
Protein Name	
Immunogen	Recombinant protein (or fragment).This information is considered to be commercially sensitive.
Specificity	
Formulation	
Source	Monoclonal,Mouse,IgG
Purification	Affinity purification
Dilution	WB 1:500-2000
Concentration	1 mg/ml
Purity	≥90%
Storage Stability	-20°C/1 year
Synonyms	Csfg; G-CSF; MGI-IG; Mouse G-CSF
Observed Band	50-60kDa (Recombinant Protein)
Calculated Molecular Weight	22kDa
Cell Pathway	
Tissue Specificity	
Function	
Background	Enables granulocyte colony-stimulating factor receptor binding activity. Acts upstream of or within positive regulation of myeloid cell differentiation. Predicted to be located in endocytic vesicle lumen and extracellular region. Predicted to be active in extracellular space. Is expressed in several structures, including brain; dorsal aorta; liver; reproductive system; and yolk sac. Human ortholog(s) of this gene implicated in several diseases, including allergic cutaneous vasculitis; artery disease (multiple); ischemia (multiple); leukemia (multiple); and lung disease (multiple). Orthologous to human CSF3 (colony stimulating factor 3)
matters needing attention	Avoid repeated freezing and thawing!



Usage suggestions

This product can be used in immunological reaction related experiments. For more information, please consult technical personnel.

Products Images



Western blot analysis of lysates from Mouse G-CSF, using Mouse G-CSF Mouse mAb (A24423) at 1:1000 dilution. Secondary antibody: HRP-conjugated Goat anti-Mouse IgG (H+L) (AS014) at 1:10000 dilution. Lysates/proteins: 25 μ g per lane. Blocking buffer: 3% nonfat dry milk in TBST. Detection: ECL Basic Kit (RM00020). Exposure time: 90s.