



ARC1B mouse mAb

Catalog No	YP-mAb-11965
Isotype	IgG
Reactivity	Human; Mouse;Rat
Applications	WB
Gene Name	ARPC1B ARC41
Protein Name	ARC1B
Immunogen	Synthesized peptide derived from human ARC1B AA range: 27-77
Specificity	This antibody detects endogenous levels of ARC1B at Human/Mouse/Rat
Formulation	Liquid in PBS containing 50% glycerol, 0.5% BSA and 0.02% sodium azide.
Source	Monoclonal, mouse,IgG
Purification	The antibody was affinity-purified from mouse serum by affinity-chromatography using specific immunogen.
Dilution	WB 1: 500-2000
Concentration	1 mg/ml
Purity	≥90%
Storage Stability	-20°C/1 year
Calculated Molecular Weight	41kD
Observed Band	
Cell Pathway	Cytoplasm, cytoskeleton . Nucleus .
Tissue Specificity	
Function	function:Functions as component of the Arp2/3 complex which is involved in regulation of actin polymerization and together with an activating nucleation-promoting factor (NPF) mediates the formation of branched actin networks.,similarity:Belongs to the WD repeat ARPC1 family.,similarity:Contains 6 WD repeats.,subunit:Component of the Arp2/3 complex composed of ARP2, ARP3, ARPC1B/p41-ARC,ARPC2/p34-ARC,ARPC3/p21-ARC, ARPC4/p20-ARC and ARPC5/p16-ARC.,
Background	This gene encodes one of seven subunits of the human Arp2/3 protein complex. This subunit is a member of the SOP2 family of proteins and is most similar to the protein encoded by gene ARPC1A. The similarity between these two proteins suggests that they both may function as p41 subunit of the human Arp2/3 complex that has been implicated in the control of actin polymerization in cells. It is possible that the p41 subunit is involved in assembling and maintaining the structure of the Arp2/3 complex. Multiple versions of the p41 subunit may adapt the functions of the complex to different cell types or developmental stages. This protein also has

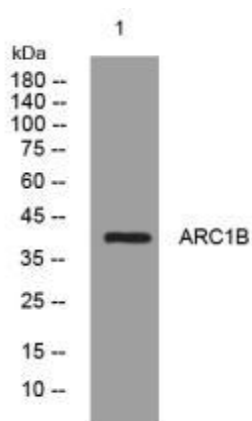
a role in centrosomal homeostasis by being an activator and substrate of the Aurora A kinase. [provided by RefSeq, Mar 2011],

matters needing attention

Avoid repeated freezing and thawing!

Usage suggestions

This product can be used in immunological reaction related experiments. For more information, please consult technical personnel.

Products Images

Western blot analysis of lysates from PC-12 cells, primary antibody was diluted at 1:1000, 4° over night