



CMPK2 mouse mAb

Catalog No	YP-mAb-11446
Isotype	IgG
Reactivity	Human; Mouse; Rat
Applications	WB
Gene Name	CMPK2
Protein Name	CMPK2
Immunogen	Synthesized peptide derived from human CMPK2 AA range: 57-107
Specificity	This antibody detects endogenous levels of CMPK2 at Human/Mouse
Formulation	Liquid in PBS containing 50% glycerol, 0.5% BSA and 0.02% sodium azide.
Source	Monoclonal, mouse, IgG
Purification	The antibody was affinity-purified from mouse serum by affinity-chromatography using specific immunogen.
Dilution	WB 1 : 500-2000
Concentration	1 mg/ml
Purity	≥90%
Storage Stability	-20°C/1 year
Observed Band	
Calculated Molecular Weight	49kD
Cell Pathway	Mitochondrion .
Tissue Specificity	Among all investigated tumors, leukemia cells show the most abundant expression.
Function	catalytic activity: ATP + (d)CMP = ADP + (d)CDP., function: May participate in dUTP and dCTP synthesis in mitochondria. Is able to phosphorylate dUMP, dCMP, CMP, UMP and monophosphates of the pyrimidine nucleoside analogs ddC, dFdC, araC, BVDU and FdUrd with ATP as phosphate donor. Efficacy is highest for dUMP followed by dCMP; CMP and UMP are poor substrates. May be involved in mtDNA depletion caused by long term treatment with ddC or other pyrimidine analogs., similarity: Belongs to the thymidylate kinase family., tissue specificity: Among all investigated tumors, leukemia cells show the most abundant expression.,
Background	This gene encodes one of the enzymes in the nucleotide synthesis salvage pathway that may participate in terminal differentiation of monocytic cells. Multiple transcript variants encoding different isoforms have been found for this gene. [provided by RefSeq, Feb 2012],

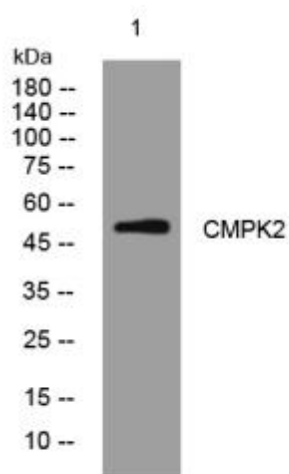
matters needing attention

Avoid repeated freezing and thawing!

Usage suggestions

This product can be used in immunological reaction related experiments. For more information, please consult technical personnel.

Products Images



Western blot analysis of lysates from DU145 cells, primary antibody was diluted at 1:1000, 4° over night