

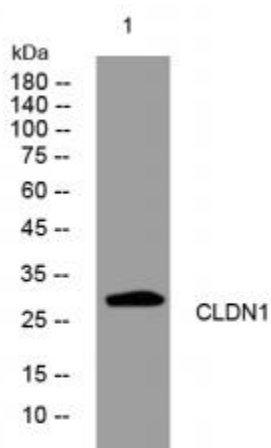


CLDN1 mouse mAb

Catalog No	YP-mAb-12282
Isotype	IgG
Reactivity	Human; Mouse; Rat
Applications	WB
Gene Name	CLDND1 C3orf4 HSPC174 PSEC0054 UNQ2511/PRO6000
Protein Name	CLDN1
Immunogen	Synthesized peptide derived from human CLDN1 AA range: 33-83
Specificity	This antibody detects endogenous levels of CLDN1 at Human/Mouse
Formulation	Liquid in PBS containing 50% glycerol, 0.5% BSA and 0.02% sodium azide.
Source	Monoclonal, mouse, IgG
Purification	The antibody was affinity-purified from mouse serum by affinity-chromatography using specific immunogen.
Dilution	WB 1: 500-2000
Concentration	1 mg/ml
Purity	≥90%
Storage Stability	-20°C/1 year
Calculated Molecular Weight	28kD
Observed Band	
Cell Pathway	Membrane ; Multi-pass membrane protein .
Tissue Specificity	Widely distributed in the adult CNS with highest expression in the corpus callosum, caudate nucleus, cerebral cortex, medulla, putamen, spinal cord, substantia nigra and subthalamic nucleus. Weak expression was detected in the adult heart.
Function	caution: The sequence shown here is derived from an Ensembl automatic analysis pipeline and should be considered as preliminary data. similarity: Belongs to the PMP-22/EMP/MP20 family. tissue specificity: Widely distributed in the adult CNS with highest expression in the corpus callosum, caudate nucleus, cerebral cortex, medulla, putamen, spinal cord, substantia nigra and subthalamic nucleus. Weak expression was detected in the adult heart.,
Background	
matters needing attention	Avoid repeated freezing and thawing!

Usage suggestions

This product can be used in immunological reaction related experiments. For more information, please consult technical personnel.

Products Images

Western blot analysis of lysates from DU145 cells, primary antibody was diluted at 1:1000, 4° over night