

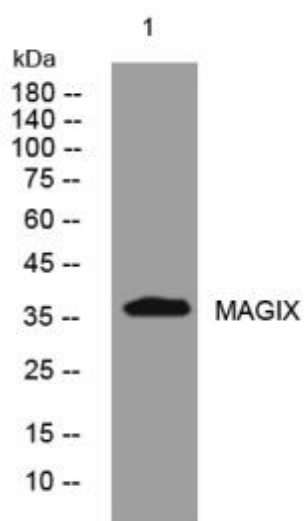


MAGIX mouse mAb

Catalog No	YP-mAb-12180
Isotype	IgG
Reactivity	Human; Mouse;Rat
Applications	WB
Gene Name	MAGIX
Protein Name	MAGIX
Immunogen	Synthesized peptide derived from human MAGIX AA range: 278-328
Specificity	This antibody detects endogenous levels of MAGIX at Human/Mouse/Rat
Formulation	Liquid in PBS containing 50% glycerol, 0.5% BSA and 0.02% sodium azide.
Source	Monoclonal, mouse,IgG
Purification	The antibody was affinity-purified from mouse serum by affinity-chromatography using specific immunogen.
Dilution	WB 1: 500-2000
Concentration	1 mg/ml
Purity	≥90%
Storage Stability	-20°C/1 year
Calculated Molecular Weight	37kD
Observed Band	
Cell Pathway	
Tissue Specificity	
Function	similarity:Contains 1 PDZ (DHR) domain.,
Background	
matters needing attention	Avoid repeated freezing and thawing!
Usage suggestions	This product can be used in immunological reaction related experiments. For more information, please consult technical personnel.



Products Images



Western blot analysis of lysates from THP-1 cells,
primary antibody was diluted at 1:1000, 4°over night