



ISG20 mouse mAb

Catalog No	YP-mAb-08693
Isotype	IgG
Reactivity	Human; Mouse; Rat
Applications	WB
Gene Name	ISG20 HEM45
Protein Name	ISG20
Immunogen	Synthesized peptide derived from human ISG20 AA range: 87-137
Specificity	This antibody detects endogenous levels of ISG20 at Human/Mouse
Formulation	Liquid in PBS containing 50% glycerol, 0.5% BSA and 0.02% sodium azide.
Source	Monoclonal, mouse, IgG
Purification	The antibody was affinity-purified from mouse serum by affinity-chromatography using specific immunogen.
Dilution	WB 1: 500-2000
Concentration	1 mg/ml
Purity	≥90%
Storage Stability	-20°C/1 year
Calculated Molecular Weight	20kD
Observed Band	
Cell Pathway	Nucleus. Nucleus, nucleolus. Cytoplasm. Nucleus, Cajal body.
Tissue Specificity	Highly expressed in peripheral blood leukocytes, spleen, thymus, colon and lung. Up regulated by E2 in estrogen receptor-positive breast cancer lines.
Function	catalytic activity: Exonucleolytic cleavage in the 3'- to 5'-direction to yield nucleoside 5'-phosphates., cofactor: Manganese., function: Exonuclease with specificity for single-stranded RNA and, to a lesser extent for DNA. Degrades RNA at a rate that is approximately 35-fold higher than its rate for single-stranded DNA. Involved in the antiviral function of IFN against RNA viruses., induction: Induced by interferons alpha and beta. Weaker induction was seen with interferon gamma. Increased expression was seen at the transcriptional level., miscellaneous: Stable and constitutive expression confers resistance to vesicular stomatitis virus (VSV), influenza virus, and encephalomyocarditis virus (EMCV) infection in HeLa cells, providing an alternative antiviral pathway against RNA genomic viruses. Up regulated by E2 in estrogen receptor-positive breast cancer lines., similarity: Belongs to the exonuclease family
Background	



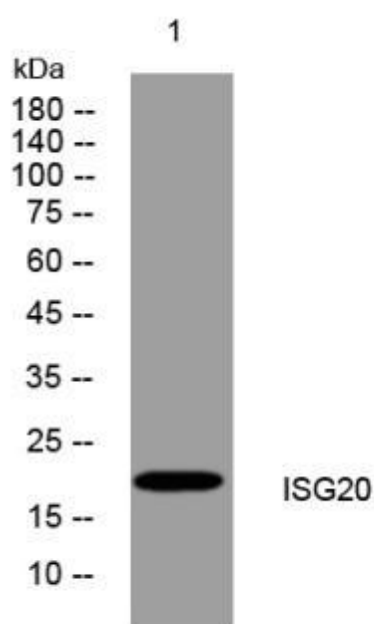
matters needing attention

Avoid repeated freezing and thawing!

Usage suggestions

This product can be used in immunological reaction related experiments. For more information, please consult technical personnel.

Products Images



Western blot analysis of lysates from Hela cells, primary antibody was diluted at 1:1000, 4° over night