

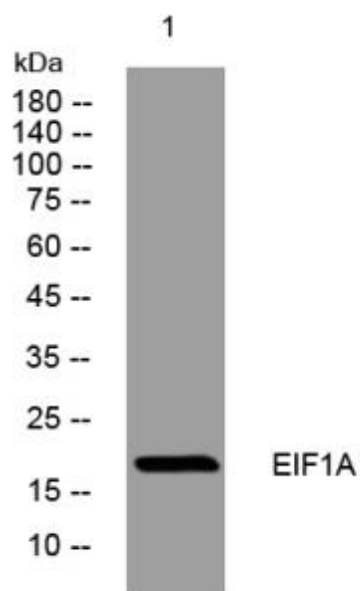


EIF1A mouse mAb

| | |
|------------------------------------|---|
| Catalog No | YP-mAb-08546 |
| Isotype | IgG |
| Reactivity | Human; Mouse;Rat |
| Applications | WB |
| Gene Name | EIF1AD |
| Protein Name | EIF1A |
| Immunogen | Synthesized peptide derived from human EIF1A AA range: 2-52 |
| Specificity | This antibody detects endogenous levels of EIF1A at Human/Mouse/Rat |
| Formulation | Liquid in PBS containing 50% glycerol, 0.5% BSA and 0.02% sodium azide. |
| Source | Monoclonal, mouse,IgG |
| Purification | The antibody was affinity-purified from mouse serum by affinity-chromatography using specific immunogen. |
| Dilution | WB 1: 500-2000 |
| Concentration | 1 mg/ml |
| Purity | ≥90% |
| Storage Stability | -20°C/1 year |
| Calculated Molecular Weight | 18kD |
| Synonyms | |
| Cell Pathway | Nucleus . |
| Tissue Specificity | Expressed in the glioblastoma cell line U-87MG, the embryonic kidney cell line HEK293, the pancreatic carcinoma cell line PANC-1, the breast carcinoma cell line MCF-7, the lung cancer cell line NCI-H460, and the chronic myelogenous leukemia cell line K-562. |
| Function | similarity:Belongs to the EIF1AD family.,similarity:Contains 1 S1-like domain., |
| Background | |
| matters needing attention | Avoid repeated freezing and thawing! |
| Usage suggestions | This product can be used in immunological reaction related experiments. For more information, please consult technical personnel. |



Products Images



Western blot analysis of lysates from U2OS cells,
primary antibody was diluted at 1:1000, 4°over night