



GSDMD C-terminal Mouse mAb

Catalog No	YP-mAb-19201
Isotype	IgG
Reactivity	Human;Mouse;Rat
Applications	WB
Gene Name	GSDMD
Protein Name	Gasdermin domain-containing protein 1, Gasdermin-D, GSDMD, GSDMD-CT, GSDMD-NT, GSDMD_HUMAN
Immunogen	
Specificity	The antibody detects endogenous full length and c-terminal fragment of gsdmd protein,
Formulation	PBS, 50% glycerol, 0.05% Proclin 300, 0.05%BSA
Source	Monoclonal, Mouse, IgG
Purification	The antibody was affinity-purified from mouse ascites by affinity-chromatography using specific immunogen.
Dilution	WB 1:500-2000
Concentration	1 mg/ml
Purity	≥90%
Storage Stability	-20°C/1 year
Synonyms	
Observed Band	53kD
Calculated Molecular Weight	53kD
Cell Pathway	[Gasdermin-D]: Cytoplasm, cytosol . Inflammasome . In response to a canonical inflammasome stimulus, such as nigericin, recruited to NLRP3 inflammasome with similar kinetics to that of uncleaved CASP1 precursor. .; [Gasdermin-D, N-terminal]: Cell membrane ; Multi-pass membrane protein . Secreted . Released in the extracellular milieu following pyroptosis. .; [Gasdermin-D, C-terminal]: Cytoplasm, cytosol .
Tissue Specificity	Expressed in the suprabasal cells of esophagus, as well as in the isthmus/neck, pit, and gland of the stomach, suggesting preferential expression in differentiating cells.
Function	Cleavage at Asp-275 by CASP1 (mature and uncleaved precursor forms), CASP4, CASP5 or CASP8 relieves autoinhibition and is sufficient to initiate pyroptosis (PubMed:26375003, PubMed:29898893, PubMed:32109412). Cleavage by CASP1 and CASP4 is not strictly dependent on the consensus cleavage site on GSDMD but depends on an exosite interface on CASP1 that recognizes and binds the Gasdermin-D, C-terminal (GSDMD-CT) part (PubMed:32109412). Cleavage by CASP8 takes place following inactivation of



MAP3K7/TAK1 by Yersinia toxin YopJ (By similarity). Cleavage at Asp-87 by CASP3 or CAPS7 inactivates the ability to mediate pyroptosis (PubMed:28392147, PubMed:28045099).

Background

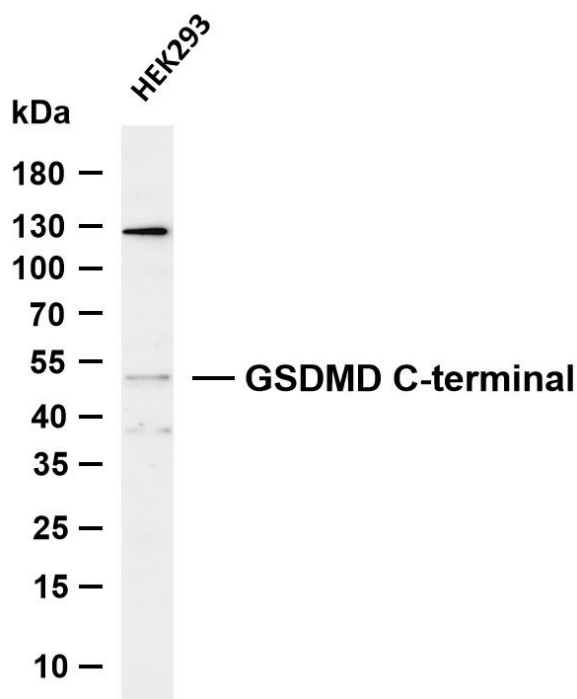
matters needing attention

Avoid repeated freezing and thawing!

Usage suggestions

This product can be used in immunological reaction related experiments. For more information, please consult technical personnel.

Products Images



Various whole cell lysates were separated by 4-20% SDS-PAGE, and the membrane was blotted with anti-GSDMD C-terminal antibody. The HRP-conjugated Goat anti-Mouse IgG (H + L) antibody was used to detect the antibody. Lane 1: HEK293 Predicted band size: 53kDa Observed band size: 53kDa