

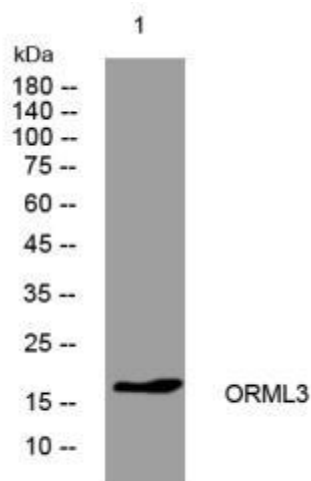


ORML3 mouse mAb

| | |
|------------------------------------|--|
| Catalog No | YP-mAb-12283 |
| Isotype | IgG |
| Reactivity | Human; Mouse;Rat |
| Applications | WB |
| Gene Name | ORMDL3 |
| Protein Name | ORML3 |
| Immunogen | Synthesized peptide derived from human ORML3 AA range: 98-148 |
| Specificity | This antibody detects endogenous levels of ORML3 at Human/Mouse/Rat |
| Formulation | Liquid in PBS containing 50% glycerol, 0.5% BSA and 0.02% sodium azide. |
| Source | Monoclonal, mouse,IgG |
| Purification | The antibody was affinity-purified from mouse serum by affinity-chromatography using specific immunogen. |
| Dilution | WB 1: 500-2000 |
| Concentration | 1 mg/ml |
| Purity | ≥90% |
| Storage Stability | -20°C/1 year |
| Calculated Molecular Weight | 17kD |
| Observed Band | |
| Cell Pathway | Endoplasmic reticulum membrane ; Multi-pass membrane protein . |
| Tissue Specificity | Widely expressed. Expressed in adult and fetal heart, brain, lung, liver, skeletal muscle and kidney. Expressed in adult pancreas and placenta and in fetal spleen abd thymus. |
| Function | similarity:Belongs to the ORM family.,tissue specificity:Widely expressed. Expressed in adult and fetal heart, brain, lung, liver, skeletal muscle and kidney. Expressed in adult pancreas and placenta and in fetal spleen abd thymus., |
| Background | |
| matters needing attention | Avoid repeated freezing and thawing! |
| Usage suggestions | This product can be used in immunological reaction related experiments. For more information, please consult technical personnel. |



Products Images



Western blot analysis of lysates from CACO2 cells,
primary antibody was diluted at 1:1000, 4°over night