

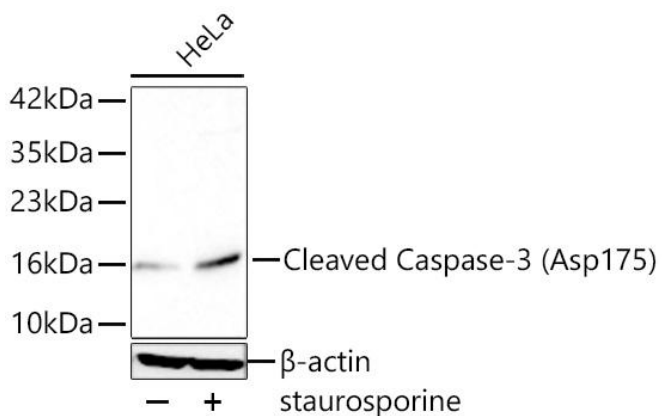


Cleaved Caspase-3 (Asp175) Mouse mAb

Catalog No	YP-mAb-18790
Isotype	IgG
Reactivity	Human,Mouse,Rat
Applications	WB
Gene Name	
Protein Name	
Immunogen	A synthetic peptide corresponding to a sequence within amino acids 76-175 of human Caspase-3
Specificity	
Formulation	
Source	
Purification	Affinity purification
Dilution	WB 1:500-2000
Concentration	1 mg/ml
Purity	≥90%
Storage Stability	-20°C/1 year
Synonyms	CPP32; SCA-1; CPP32B
Observed Band	17kDa
Calculated Molecular Weight	17KD
Tissue Specificity	
Function	
Background	The protein encoded by this gene is a cysteine-aspartic acid protease that plays a central role in the execution-phase of cell apoptosis. The encoded protein cleaves and inactivates poly(ADP-ribose) polymerase while it cleaves and activates sterol regulatory element binding proteins as well as caspases 6, 7, and 9. This protein itself is processed by caspases 8, 9, and 10. It is the predominant caspase involved in the cleavage of amyloid-beta 4A precursor protein, which is associated with neuronal death in Alzheimer's disease.
matters needing attention	Avoid repeated freezing and thawing!
Usage suggestions	This product can be used in immunological reaction related experiments. For more information, please consult technical personnel.



Products Images



Western blot analysis of lysates from HeLa cells using Cleaved Caspase-3 (Asp175) Mouse mAb (A27145) at 1:1000 dilution incubated overnight at 4°C. HeLa cells were treated by staurosporine (1μ M) for 3 hour. Secondary antibody: HRP-conjugated Goat anti-Mouse IgG (H+L) (AS014) at 1:10000 dilution. Lysates/proteins: 30 μg per lane. Blocking buffer: 3 % nonfat dry milk in TBST. Detection: ECL Basic Kit (RM00020). Exposure time: 90s.