



IL-8RA Polyclonal Antibody

Catalog No	YP-Ab-10742
Isotype	IgG
Reactivity	Human
Applications	WB;IHC;IF;ELISA
Gene Name	CXCR1 CMKAR1 IL8RA
Protein Name	C-X-C chemokine receptor type 1 (CXC-R1) (CXCR-1) (CDw128a) (High affinity interleukin-8 receptor A) (IL-8R A) (IL-8 receptor type 1) (CD antigen CD181)
Immunogen	Synthetic peptide from human protein at AA range: 1-50
Specificity	The antibody detects endogenous IL-8RA
Formulation	Liquid in PBS containing 50% glycerol, 0.5% BSA and 0.02% sodium azide.
Source	Polyclonal, Rabbit,IgG
Purification	The antibody was affinity-purified from rabbit antiserum by affinity-chromatography using epitope-specific immunogen.
Dilution	IHC-p 1:50-200, ELISA 1:10000-20000. IF 1:50-200
Concentration	1 mg/ml
Purity	≥90%
Storage Stability	-20°C/1 year
Synonyms	C-X-C chemokine receptor type 1 (CXC-R1;CXCR-1;CDw128a;High affinity interleukin-8 receptor A;IL-8R A;IL-8 receptor type 1;CD antigen CD181)
Observed Band	40kD
Cell Pathway	Cell membrane; Multi-pass membrane protein.
Tissue Specificity	Blood,Placenta,
Function	function:Receptor to interleukin-8, which is a powerful neutrophils chemotactic factor. Binding of IL-8 to the receptor causes activation of neutrophils. This response is mediated via a G-protein that activate a phosphatidylinositol-calcium second messenger system. This receptor binds to IL-8 with a high affinity and to MGSA (GRO) with a low affinity.,online information:CXC chemokine receptors entry,similarity:Belongs to the G-protein coupled receptor 1 family.,
Background	C-X-C motif chemokine receptor 1(CXCR1) Homo sapiens The protein encoded by this gene is a member of the G-protein-coupled receptor family. This protein is a receptor for interleukin 8 (IL8). It binds to IL8 with high affinity, and transduces the signal through a G-protein activated second messenger system. Knockout studies in mice suggested that this protein inhibits embryonic oligodendrocyte precursor migration in developing spinal cord. This gene, IL8RB, a gene encoding another high affinity IL8 receptor, as well as IL8RBP, a pseudogene of IL8RB, form a gene cluster in a region mapped to chromosome



2q33-q36. [provided by RefSeq, Jul 2008],

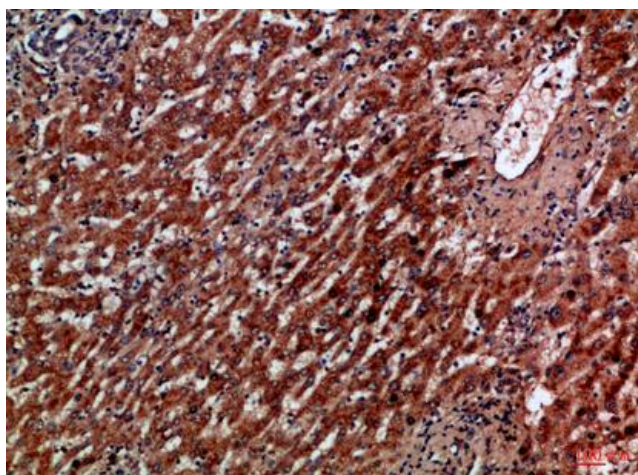
matters needing attention

Avoid repeated freezing and thawing!

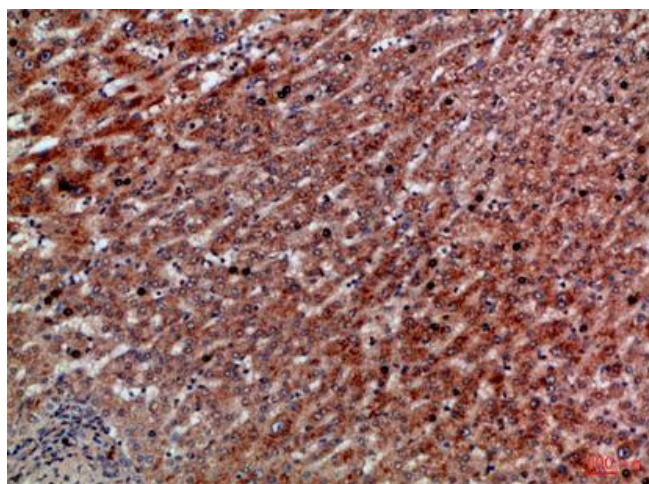
Usage suggestions

This product can be used in immunological reaction related experiments. For more information, please consult technical personnel.

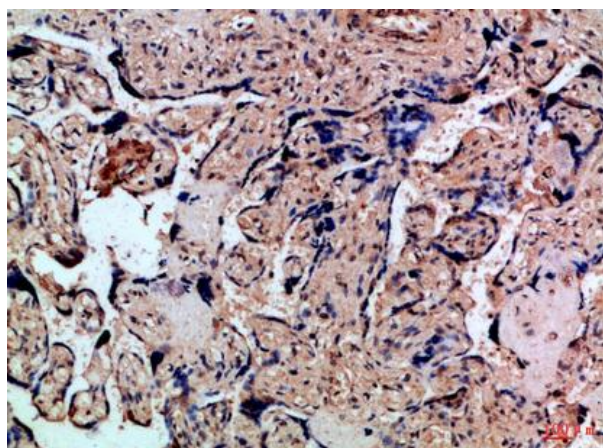
Products Images



Immunohistochemical analysis of paraffin-embedded Human-liver-cancer, antibody was diluted at 1:100



Immunohistochemical analysis of paraffin-embedded Human-liver-cancer, antibody was diluted at 1:100



Immunohistochemical analysis of paraffin-embedded Human-placenta, antibody was diluted at 1:100