

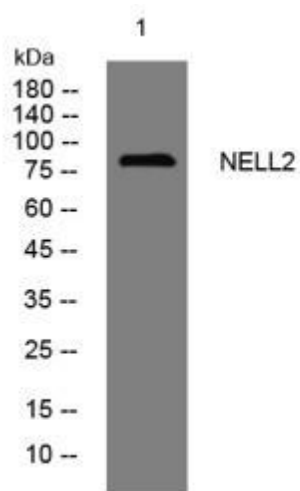


NELL2 mouse mAb

Catalog No	YP-mAb-11723
Isotype	IgG
Reactivity	Human; Mouse;Rat
Applications	WB
Gene Name	NELL2 NRP2
Protein Name	NELL2
Immunogen	Synthesized peptide derived from human NELL2 AA range: 509-559
Specificity	This antibody detects endogenous levels of NELL2 at Human/Mouse/Rat
Formulation	Liquid in PBS containing 50% glycerol, 0.5% BSA and 0.02% sodium azide.
Source	Monoclonal, mouse,IgG
Purification	The antibody was affinity-purified from mouse serum by affinity-chromatography using specific immunogen.
Dilution	WB 1: 500-2000
Concentration	1 mg/ml
Purity	≥90%
Storage Stability	-20°C/1 year
Calculated Molecular Weight	90kD
Observed Band	
Cell Pathway	Secreted .
Tissue Specificity	
Function	similarity:Contains 1 TSP N-terminal (TSPN) domain.,similarity:Contains 5 VWFC domains.,similarity:Contains 6 EGF-like domains.,subunit:Homotrimer. Binds to PKC beta-1.,
Background	The protein encoded by this gene is a glycoprotein containing several von Willebrand factor C domains and epidermal growth factor (EGF)-like domains. The encoded protein acts as a homotrimer and is found in the cytoplasm. Several variants encoding a few different isoforms exist, and at least one isoform appears to be a secreted protein. Studies in mouse suggest that this protein plays a role in neural cell growth and differentiation as well as in oncogenesis. [provided by RefSeq, Feb 2009],
matters needing attention	Avoid repeated freezing and thawing!

Usage suggestions

This product can be used in immunological reaction related experiments. For more information, please consult technical personnel.

Products Images

Western blot analysis of lysates from Hela cells,
primary antibody was diluted at 1:1000, 4° over night