

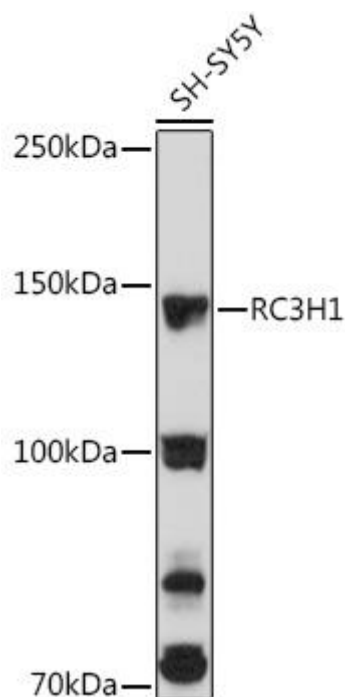


RC3H1 Mouse mAb

Catalog No	YP-mAb-19156
Isotype	IgG
Reactivity	Human,Mouse,Rat
Applications	WB
Gene Name	
Protein Name	
Immunogen	Recombinant protein (or fragment).This information is considered to be commercially sensitive.
Specificity	
Formulation	
Source	Monoclonal,Mouse,IgG
Purification	Affinity purification
Dilution	WB 1:500-2000
Concentration	1 mg/ml
Purity	≥90%
Storage Stability	-20°C/1 year
Synonyms	FHL6; IMDSHY; RNF198; ROQUIN; RC3H1
Observed Band	126kDa
Calculated Molecular Weight	126kDa
Cell Pathway	
Tissue Specificity	
Function	
Background	This gene encodes a protein containing RING-type and C3H1-type zinc finger motifs. The encoded protein recognizes and binds to a constitutive decay element (CDE) in the 3' UTR of mRNAs, leading to mRNA deadenylation and degradation. Alternative splicing results in multiple transcript variants.
matters needing attention	Avoid repeated freezing and thawing!
Usage suggestions	This product can be used in immunological reaction related experiments. For more information, please consult technical personnel.



Products Images



Western blot analysis of lysates from SH-SY5Y cells, using RC3H1 Mouse mAb (A15569) at 1:3000 dilution. Secondary antibody: HRP-conjugated Goat anti-Mouse IgG (H+L) (AS014) at 1:10000 dilution. Lysates/proteins: 25μg per lane. Blocking buffer: 3% nonfat dry milk in TBST. Detection: ECL Basic Kit (RM00020). Exposure time: 180s.