



# R-Spondin Monoclonal Antibody

|                                    |  |
|------------------------------------|--|
| <b>Catalog No</b>                  | YP-mAb-16839   |
| <b>Isotype</b>                     | IgG  |
| <b>Reactivity</b>                  | Human;Mouse;Rat  |
| <b>Applications</b>                | WB   |
| <b>Gene Name</b>                   | RSPO1  |
| <b>Protein Name</b>                | R-spondin-1  |
| <b>Immunogen</b>                   | Purified recombinant fragment of R-spondin1 expressed in E. Coli.  |
| <b>Specificity</b>                 | R-Spondin Monoclonal Antibody detects endogenous levels of R-Spondin protein.  |
| <b>Formulation</b>                 | Ascitic fluid containing 0.03% sodium azide,0.5% BSA, 50%glycerol.   |
| <b>Source</b>                      | Monoclonal, Mouse  |
| <b>Purification</b>                | Affinity purification  |
| <b>Dilution</b>                    | Western Blot: 1/500 - 1/2000.  |
| <b>Concentration</b>               | 1 mg/ml  |
| <b>Purity</b>                      | ≥90%   |
| <b>Storage Stability</b>           | -20°C/1 year   |
| <b>Synonyms</b>                    | RSPO1; R-spondin-1; Roof plate-specific spondin-1; hRspo1  |
| <b>Calculated Molecular Weight</b> | 29kD   |
| <b>Cell Pathway</b>                | Secreted . Nucleus . Seems to mainly localize to nucleoli .  |
| <b>Tissue Specificity</b>          | Abundantly expressed in adrenal glands, ovary, testis, thyroid and trachea but not in bone marrow, spinal cord, stomach, leukocytes colon, small intestine, prostate, thymus and spleen.   |
| <b>Function</b>                    | disease:Defects in RSPO1 are the cause of palmoplantar keratoderma with squamous cell carcinoma of skin and sex reversal (PKKSCC) [MIM:610644]. This recessive syndrome is characterized by XX (female to male) SRY-independent sex reversal, palmoplantar hyperkeratosis and predisposition to squamous cell carcinoma of the skin..domain:The FU repeats are required for activation and stabilization of beta-catenin..function:Activator of the beta-catenin signaling cascade, leading to TCF-dependent gene activation. Acts both in the canonical Wnt/beta-catenin-dependent pathway, possibly via a direct interaction with Wnt proteins, and in a Wnt-independent beta catenin pathway through a receptor signaling pathway that may not use frizzled/LRP receptors. Acts as a ligand for frizzled FZD8 and LRP6. May negatively regulate the TGF-beta pathway. Has a essential roles in ovary determination..miscellaneous |
| <b>Background</b>                  | This gene encodes a secreted activator protein with two cysteine-rich, furin-like domains and one thrombospondin type 1 domain. The encoded protein is a ligand for leucine-rich repeat-containing G-protein coupled receptors (LGR proteins) and  |



positively regulates the Wnt signaling pathway. In mice, the protein induces the rapid onset of crypt cell proliferation and increases intestinal epithelial healing, providing a protective effect against chemotherapy-induced adverse effects. Alternative splicing results in multiple transcript variants. [provided by RefSeq, Apr 2014],

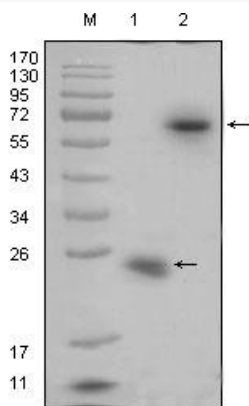
**matters needing attention**

Avoid repeated freezing and thawing!

**Usage suggestions**

This product can be used in immunological reaction related experiments. For more information, please consult technical personnel.

## Products Images



Western Blot analysis using R-Spondin Monoclonal Antibody against recombinant R-spondin1 protein (1) and R-spondin1(aa21-263)-hIgGFc transfected HEK293 cell lysate(2).