



# MARCKS Polyclonal Antibody

<b>Catalog No</b>	YP-Ab-03951
<b>Isotype</b>	IgG
<b>Reactivity</b>	Human;Mouse;Rat
<b>Applications</b>	WB;IF;ELISA
<b>Gene Name</b>	MARCKS
<b>Protein Name</b>	Myristoylated alanine-rich C-kinase substrate
<b>Immunogen</b>	The antiserum was produced against synthesized peptide derived from human MARCKS. AA range:126-175
<b>Specificity</b>	MARCKS Polyclonal Antibody detects endogenous levels of MARCKS protein.
<b>Formulation</b>	Liquid in PBS containing 50% glycerol, 0.5% BSA and 0.02% sodium azide.
<b>Source</b>	Polyclonal, Rabbit,IgG
<b>Purification</b>	The antibody was affinity-purified from rabbit antiserum by affinity-chromatography using epitope-specific immunogen.
<b>Dilution</b>	Western Blot: 1/500 - 1/2000. Immunofluorescence: 1/200 - 1/1000. ELISA: 1/20000. Not yet tested in other applications.
<b>Concentration</b>	1 mg/ml
<b>Purity</b>	≥90%
<b>Storage Stability</b>	-20°C/1 year
<b>Synonyms</b>	MARCKS; MACS; PRKCSL; Myristoylated alanine-rich C-kinase substrate; MARCKS; Protein kinase C substrate; 80 kDa protein, light chain; 80K-L protein; PKCSL
<b>Observed Band</b>	80kD
<b>Calculated Molecular Weight</b>	31kD
<b>Cell Pathway</b>	Cytoplasm, cytoskeleton . Membrane ; Lipid-anchor .
<b>Tissue Specificity</b>	Blood,Brain,Epithelium,Muscle,Skin,
<b>Function</b>	function:MARCKS is the most prominent cellular substrate for protein kinase C. This protein binds calmodulin, actin, and synapsin. MARCKS is a filamentous (F) actin cross-linking protein.,PTM:Phosphorylation by PKC displaces MARCKS from the membrane. It also inhibits the F-actin cross-linking activity.,similarity:Belongs to the MARCKS family.,
<b>Background</b>	The protein encoded by this gene is a substrate for protein kinase C. It is localized to the plasma membrane and is an actin filament crosslinking protein. Phosphorylation by protein kinase C or binding to calcium-calmodulin inhibits its association with actin and with the plasma membrane, leading to its presence in



the cytoplasm. The protein is thought to be involved in cell motility, phagocytosis, membrane trafficking and mitogenesis. [provided by RefSeq, Jul 2008],

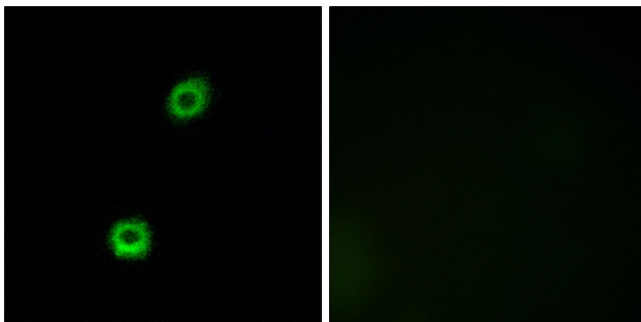
**matters needing attention**

Avoid repeated freezing and thawing!

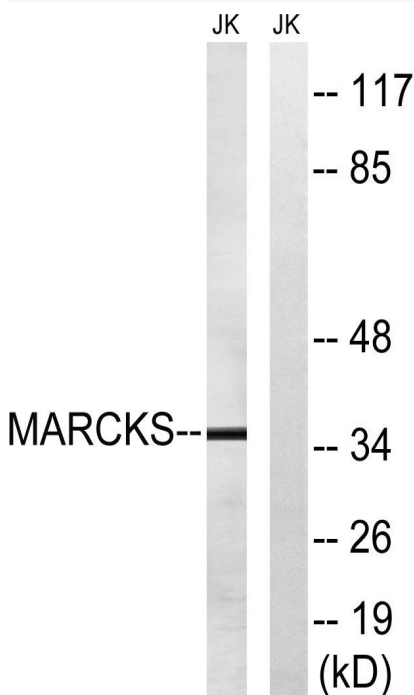
**Usage suggestions**

This product can be used in immunological reaction related experiments. For more information, please consult technical personnel.

**Products Images**



Immunofluorescence analysis of A549 cells, using MARCKS Antibody. The picture on the right is blocked with the synthesized peptide.



Western blot analysis of lysates from Jurkat cells, using MARCKS Antibody. The lane on the right is blocked with the synthesized peptide.

