

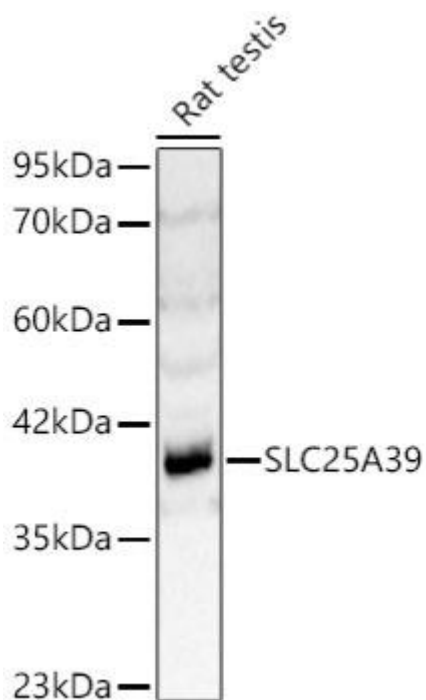


Slc25A39 Mouse mAb

Catalog No	YP-mAb-19133
Isotype	IgG
Reactivity	Human,Mouse,Rat
Applications	WB
Gene Name	
Protein Name	
Immunogen	Recombinant protein (or fragment).This information is considered to be commercially sensitive.
Specificity	
Formulation	
Source	Monoclonal,Mouse,IgG
Purification	Affinity purification
Dilution	WB 1:500-2000
Concentration	1 mg/ml
Purity	≥90%
Storage Stability	-20°C/1 year
Synonyms	CGI69; CGI-69; SLC25A39
Observed Band	39kDa
Calculated Molecular Weight	39kDa
Cell Pathway	
Tissue Specificity	
Function	
Background	This gene encodes a member of the SLC25 transporter or mitochondrial carrier family of proteins. Members of this family are encoded by the nuclear genome while their protein products are usually embedded in the inner mitochondrial membrane and exhibit wide ranging substrate specificity. Although the encoded protein is currently considered an orphan transporter, this protein is related to other carriers known to transport amino acids. This protein may play a role in iron homeostasis.
matters needing attention	Avoid repeated freezing and thawing!

**Usage suggestions**

This product can be used in immunological reaction related experiments. For more information, please consult technical personnel.

Products Images

Western blot analysis of lysates from Rat testis using SLC25A39 Mouse mAb (A15450) at 1:2000 dilution. Secondary antibody: HRP-conjugated Goat anti-Mouse IgG (H+L) (AS014) at 1:10000 dilution. Lysates/proteins: 25 μ g per lane. Blocking buffer: 3% nonfat dry milk in TBST. Detection: ECL Basic Kit (RM00020). Exposure time: 10s