



# DOC10 rabbit pAb

<b>Catalog No</b>	YP-Ab-08491
<b>Isotype</b>	IgG
<b>Reactivity</b>	Human; Mouse
<b>Applications</b>	WB
<b>Gene Name</b>	DOCK10 KIAA0694 ZIZ3
<b>Protein Name</b>	DOC10
<b>Immunogen</b>	Synthesized peptide derived from human DOC10 AA range: 2051-2101
<b>Specificity</b>	This antibody detects endogenous levels of DOC10 at Human/Mouse
<b>Formulation</b>	Liquid in PBS containing 50% glycerol, 0.5% BSA and 0.02% sodium azide.
<b>Source</b>	Polyclonal, Rabbit,IgG
<b>Purification</b>	The antibody was affinity-purified from rabbit serum by affinity-chromatography using specific immunogen.
<b>Dilution</b>	WB 1: 500-2000
<b>Concentration</b>	1 mg/ml
<b>Purity</b>	≥90%
<b>Storage Stability</b>	-20°C/1 year
<b>Synonyms</b>	
<b>Calculated Molecular Weight</b>	240kD
<b>Cell Pathway</b>	Nucleus . Cytoplasm . Cell projection, dendritic spine .
<b>Tissue Specificity</b>	Expressed at low level in brain and lung. Isoform 1 is enriched in normal T-cells, isoform 3 is enriched in normal B-cells and chronic lymphocytic leukemia (CLL) B-cells.
<b>Function</b>	domain:The DHR-2 domain may mediate some GEF activity.,function:Potential guanine nucleotide exchange factor (GEF). GEF proteins activate some small GTPases by exchanging bound GDP for free GTP.,similarity:Belongs to the DOCK family.,similarity:Contains 1 DHR-1 (CZH-1) domain.,similarity:Contains 1 DHR-2 (CZH-2) domain.,similarity:Contains 1 PH domain.,tissue specificity:Expressed at low level in brain and lung.,
<b>Background</b>	This gene encodes a member of the dedicator of cytokinesis protein family. Members of this family are guanosine nucleotide exchange factors for Rho GTPases and defined by the presence of conserved DOCK-homology regions. The encoded protein belongs to the D (or Zizimin) subfamily of DOCK proteins, which also contain an N-terminal pleckstrin homology domain. Alternatively spliced transcript variants that encode different isoforms have been described. [provided by RefSeq, Mar 2014],

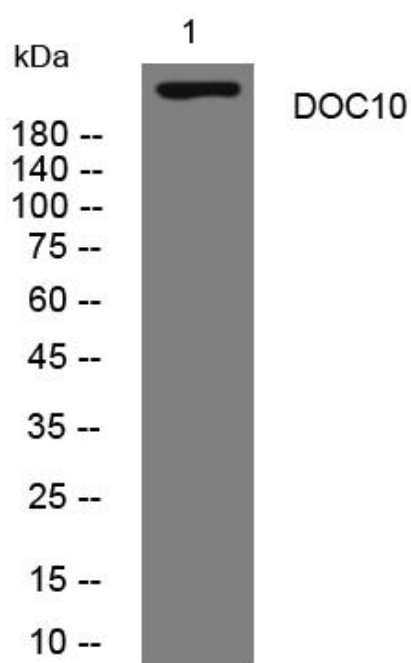
**matters needing attention**

Avoid repeated freezing and thawing!

**Usage suggestions**

This product can be used in immunological reaction related experiments. For more information, please consult technical personnel.

## Products Images



Western blot analysis of lysates from Jarkat cells, primary antibody was diluted at 1:1000, 4° over night